

# County of Imperial



## General Purpose Financial Statements

For The Fiscal Year Ended June 30, 2006



Photograph by Shelly Smail

**Douglas R. Newland, CPA**  
County Auditor-Controller



**COUNTY OF IMPERIAL  
TABLE OF CONTENTS  
FOR THE FISCAL YEAR ENDED JUNE 30, 2006**

	<b>Page <u>No.</u></b>
<b>Introductory Section</b>	
Letter of Transmittal	1-4
Certificate of Achievement for Excellence in Financial Reporting	5
Organizational Chart	6
Directory of Public Officials	7
<b>Financial Section</b>	
Independent Auditors' Report	8-9
Management's Discussion and Analysis	10-18
Basic Financial Statements:	
Government-wide Financial Statements:	
Statement of Net Assets	19
Statement of Activities	20
Fund Financial Statements:	
Balance Sheet – Governmental Funds	21
Reconciliation of the Governmental Funds Balance Sheet to the Statement of Net Assets	22
Statement of Revenues, Expenditures, and Changes in Fund Balances-Governmental	23
Reconciliation of the Statement of Revenues, Expenditures, and Changes in Fund	
Balances of Governmental Funds to the Statement of Activities	24
Statement of Net Assets – Proprietary Funds	25
Statement of Revenues, Expenses, and Changes in Net Assets – Proprietary Funds	26
Statement of Cash Flows – Proprietary Funds	27
Statement of Fiduciary Net Assets – Fiduciary Funds	28
Statement of Changes in Fiduciary Net Assets – Fiduciary Funds	29
Notes to the Basic Financial Statements	30-46
Required Supplementary Information – (Other than MD & A)	
Employees' Retirement System – Analysis of Funding Progress	47
Budgetary Comparison Schedule – General Fund	48
Other Supplementary Information:	
Combining and Individual Fund Statements and Schedules:	
Combining Balance Sheet – Nonmajor Governmental Funds	53
Combining Statement of Revenues, Expenditures and Changes in Fund Balances - Nonmajor Governmental Funds	54
Additional Financial Information:	
Special Revenue Funds:	
Combining Balance Sheet – Nonmajor Special Revenue Funds	55-57

**COUNTY OF IMPERIAL  
TABLE OF CONTENTS  
FOR THE FISCAL YEAR ENDED JUNE 30, 2006**

	<b>Page No.</b>
Special Revenue Funds:	
Combining Statement of Revenues, Expenditures and Changes in Fund Balance – Nonmajor Special Revenue Funds	58-61
Schedules of Revenues, Expenditures, and Changes in Fund Balances – Budget vs. Actual Special Revenue Funds:	
Library Fund	62
Fire Protection Fund	63
Public Works Roads Fund	64
State/Federal Jail Improvements Fund	65
Criminal Justice Facilities Fund	66
Geothermal Administration	67
Service Authority Freeway Emergency Fund	68
Public Works Solid Waste Disposal	69
Federal Asset Forfeiture	70
AB 443 Local Law Enforcement Grant Fund	71
Sheriff’s Information Technology System	72
Bio-Terrorism Preparedness	73
Medi-Cal CMSP Fund	74
ICCED Funds	75
Other Special Revenue Funds	76
Internal Service Funds:	
Combining Balance Sheet – Internal Service Funds	79-81
Combining Statement of Revenues, Expenditures and Changes in Fund Net Assets – Internal Service Funds	82-84
Combining Statement of Cash Flows – Internal Service Funds	85-89
Capital Assets Used in the Operation of Governmental Funds:	
Comparative Schedules by Source	90
Schedule by Function and Activity	91
Schedule of Changes by Function and Activity	92
 <b>Single Audit Section</b> 	
Independent Auditor’s Report on Internal Control Over Financial Reporting and on Compliance And Other Matters Based on an Audit of Financial Statements Performed in Accordance With “Governmental Auditing Standards”	93-94
Independent Auditor’s Report on Compliance with Requirements Applicable to Each Major Program and Internal Control Over Compliance in Accordance with OMB Circular A-133	95-96
Schedule of Expenditures of Federal Awards	97-103
Schedule of Findings and Questioned Costs	104-105
Status of Prior Year Findings and Questioned Costs	106
Notes to Schedule of Expenditures of Federal Awards	107



## **INTRODUCTORY SECTION**

- Letter of Transmittal
- Certificate of Achievement for Excellence  
In Financial Reporting
- Organizational Chart
- Directory of Public Officials



**Douglas R. Newland, CPA**

Auditor-Controller  
dougnewland@imperialcounty.net



**County Administration Center**

940 Main Street, Suite 108  
El Centro, California 92243  
Telephone: 760-482-4535  
FAX: 760-482-4557

**AUDITOR-CONTROLLER**

The Honorable Board of Supervisors  
County of Imperial  
County Administration Center  
940 Main Street  
El Centro, CA 92243

Honorable Board Members:

The Annual Financial report of the County of Imperial for the fiscal year ended June 30, 2006, is submitted herewith in accordance with Section 25253 of the Government Code of the State of California.

The accompanying financial statements were prepared in accordance with accounting standards generally accepted in the United States of America as promulgated by the Governmental Accounting Standards Board, the accepted standard setting body for establishing governmental accounting and financial reporting principles.

The responsibility for both the accuracy of the presented data and the completeness and fairness of the presentation, including all disclosures, rests with the County. We believe the data is presented in a manner designed to fairly set forth the financial position and results of operations of the County as measured by the financial activity of its various funds and account groups, and that all disclosures necessary to enable the reader to gain a full understanding of the County's financial activities have been included.

The County is required to undergo an annual single audit in conformity with the provisions of the Single Audit Act of 1996 and the U.S. Office of Management and Budget Circular A-133, "Audits of States, Local Governments and Non-Profit Organizations".

The Annual Financial report is presented in four sections: introduction, management's discussion and analysis, financial statements and federal schedules. The introductory section includes this transmittal letter, the County's organizational chart and a list of principal County officials. The financial section includes the General Purpose Financial Statements, as well as, the Independent Auditors' Report on the financial statements and schedules. The federal section contains information related to the Single Audit, including the Schedule of Expenditures of Federal Awards, findings and questioned costs, and the Independent Auditors' Report on Compliance and Internal Control.

## **THE REPORTING ENTITY AND ITS SERVICES**

The County of Imperial, located in Southern California, on the Mexican border, was established by an act of the State Legislature on August 7, 1907, forming the County from the eastern part of San Diego County. The County is a general law county divided in to five supervisorial districts on the basis of registered population. The County encompasses an area of over 4,597 square miles and includes 7 incorporated cities. The County ranks as one of the top ten agricultural counties in California. It is ranked 31 of 58 counties in terms of population.

The County provides a wide range of services to its residents including law enforcement, medical and health services, education, senior citizen assistance, roads, library services, judicial institutions including support services, airport service, cultural and environmental services, parks and a variety of public assistance programs. Special districts and County service areas provide services to remote geographical areas and communities. These services include fire protection, parks, flood control, water, sewer, street lighting and roads.

The accompanying General Purpose Financial Statements include all organizations, functions and activities of the County for which the County Board of Supervisors is financially accountable. Also included are numerous self-governed school and special districts for which the County acts as depository. The financial reporting for these entities, which are governed and act independently of the County of Imperial, is limited to reporting, as Agency Funds, the total amount of cash and investments and other assets collected for, disbursed by, and held for, these entities.

## **FINANCIAL INFORMATION**

The County's internal accounting control system exists to provide reasonable, but not absolute, assurance that assets are safeguarded against loss or unauthorized disposition and to provide reliable records for preparing financial statements and maintaining accountability for assets. The County's internal audit staff actively participates in evaluating and upgrading the internal accounting control system.

As a recipient of Federal and State financial assistance, the County also is responsible for ensuring that an adequate internal control structure is in place to assure compliance with applicable laws and regulations related to public assistance programs. This internal control structure is subject to periodic evaluation by management and the internal audit staff.

The County uses the modified accrual basis of accounting for its Governmental, Debt Service and Fiduciary Funds. Revenues are recognized when they become measurable and available to finance operations of the year. Expenditures are generally recognized when the related fund liability is incurred except for interest on long-term obligations, which is recognized when payment is due. The accrual basis of accounting is used for all Proprietary Fund types. Revenues are recognized when they are earned and become measurable and expenses are recorded when they are incurred.



The objective of budgetary control is to ensure compliance with legal provisions embodied in the annual appropriated budget approved by the County's Board of Supervisors. Budgets are adopted for the General Fund, certain Special Revenue Funds, the County Service Areas Debt Service Funds and certain Capital Project Funds. The level of budgetary control (that is, the level at which expenditures cannot legally exceed the appropriated amount) is maintained at the expenditure object level. Encumbrance accounting is utilized to assure effective budgetary control; purchase orders and contracts are reviewed and a determination is made that valid and sufficient appropriations exist for payment for ordered goods and services. Encumbrances outstanding at year-end do not constitute expenditures or liabilities. Unencumbered appropriations lapse at year-end and encumbrances outstanding at that time are reported as reservations of fund balance for subsequent year expenditures.

General Government Functions - The General Fund is used to account for all activities of a general nature including administration, legislation, public protection, health and welfare, parks and recreation.

Proprietary Operations-Proprietary Funds are used to account for internal service and enterprise activities.

Internal Service Funds include the County's motor vehicle fleet, central duplicating and various insurance loss reserves. The intent is for these functions to operate on a cost recovery basis and provide funds for the replacement of assets. Operating deficits will be recovered through increased charges in subsequent years.

Enterprise Funds consist chiefly of Imperial Airport, The State Transit Program and Landfill Closure/Postclosure fund. These are funded by user charges; deficiencies as a result of operations should be recovered through increased charges in subsequent years.

Fiduciary Operations-The County maintains a significant number of funds to carry out its fiduciary responsibilities. These include funds for school districts, autonomous special districts and taxes.

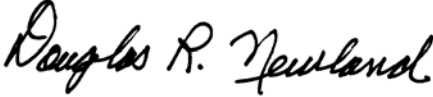
## **INDEPENDENT AUDIT**

State statutes require an annual audit by a Certified Public Accountant. The firm of Hutchinson and Bloodgood LLP has audited the County's financial statements. In addition to meeting the requirements of State law, the audit was also designed to comply with the Federal Single Audit Act of 1996 and OMB Circular A-133. The auditors' reports on these matters are included in these financial statements.

## ACKNOWLEDGEMENTS

I wish to express my appreciation to the entire Auditor/Controller staff, the County departments which participated and our independent auditors, Hutchinson and Bloodgood LLP, for their assistance in the report preparation.

Respectfully submitted,

A handwritten signature in black ink that reads "Douglas R. Newland". The signature is written in a cursive style. To the right of the signature is a vertical red line.

Douglas R. Newland CPA  
Auditor-Controller

Office of the Controller  
State of California

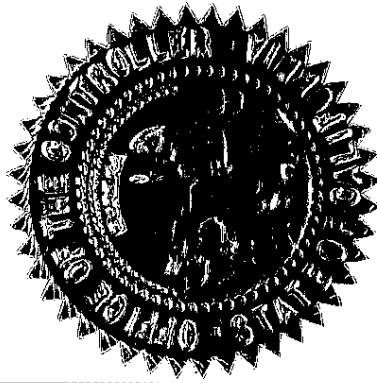
**AWARD FOR ACHIEVING EXCELLENCE  
IN FINANCIAL REPORTING**

*Presented to*

**COUNTY OF IMPERIAL**

*For its Year-End Financial Reports  
For the Fiscal Year Ended June 30, 2005*

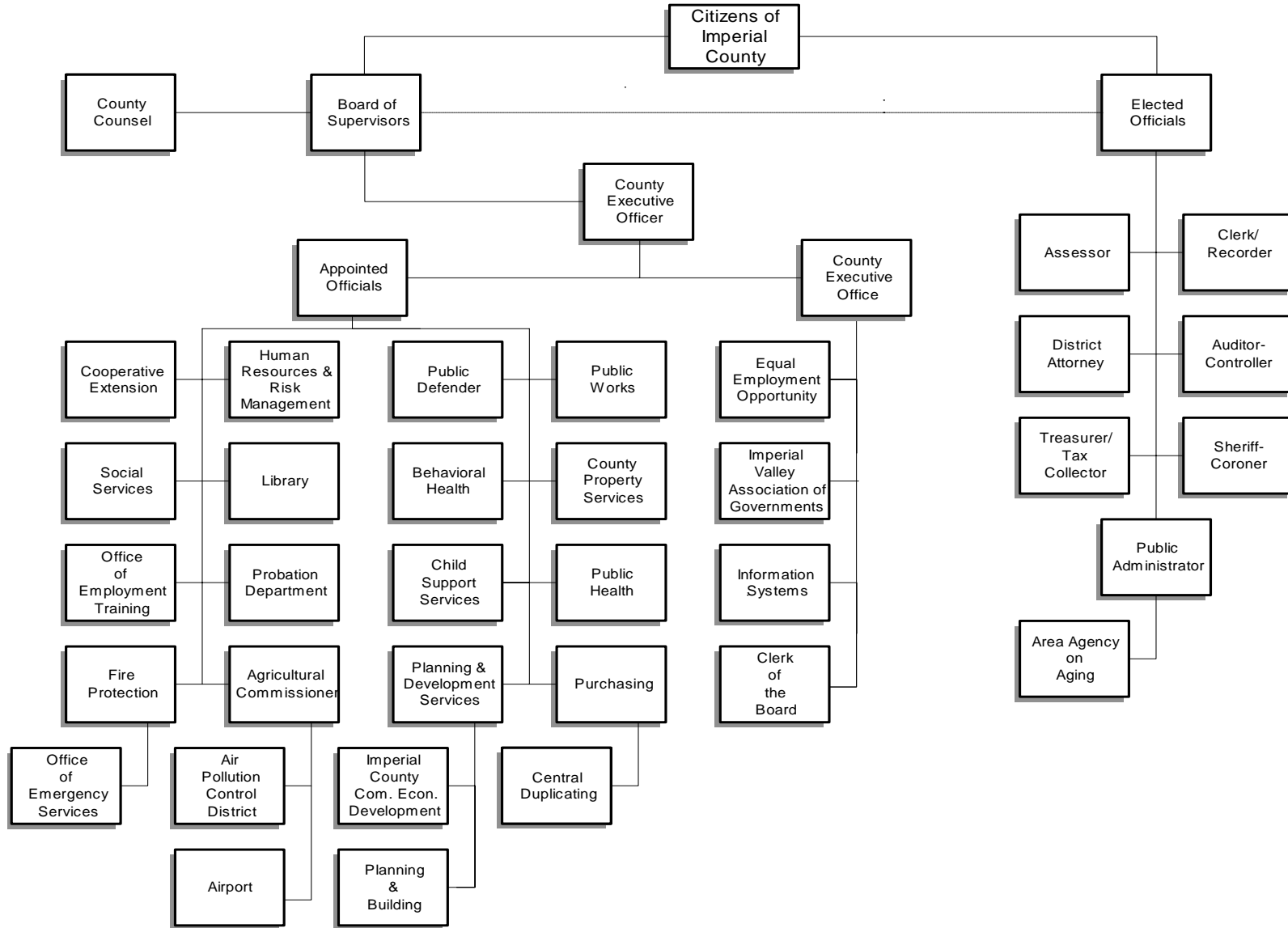
This Award for Achieving Excellence in Financial Reporting is presented by the California State Controller to your County for achieving the highest quality in California government accounting and financial reporting.



A handwritten signature in black ink that reads "Steve Westly".

**STEVE WESTLY**, California State Controller  
Dated at Sacramento, California, this 17th day of October 2006

**COUNTY OF IMPERIAL  
ORGANIZATIONAL CHART  
FISCAL YEAR 2005-06**



# Directory of Public Officials

(as of 2/28/07)

## Elected Officials

Supervisor 1 <sup>st</sup> District	Victor Carrillo	
Supervisor 2 <sup>nd</sup> District	Larry Grogran	
Supervisor 3 <sup>rd</sup> District	Joe Maruca	
Supervisor 4 <sup>th</sup> District	Gary Wyatt	
Supervisor 5 <sup>th</sup> District	Wally Leimgruber	
Judge, Superior Court Dept. 1	Annie M. Gutierrez	
Judge, Superior Court Dept. 2	Juan Ulloa	
Judge, Superior Court Dept. 3	Barrett Foerster	
Judge, Superior Court Dept. 5	Jeffrey B. Jones	
Judge, Superior Court Dept. 7	Christopher Yeager	
Judge, Superior Court Dept. 8	William Lehman	
Judge, Superior Court Dept. 9	Joseph W. Zimmerman	
Judge, Superior Court Brawley	Donal Donnelly	
Judge, Superior Court Calexico	Raymond Cota	
Assessor	Jose Rodriguez	General Government
Auditor/Controller	Douglas Newland	General Government
Clerk/Recorder	Dolores Provencio	General Government
District Attorney	Gilbert Otero	Public Protection
Public Administrator	Norma Saikhon	Public Protection
Sheriff/Coroner	Raymond Loera	Public Protection
Treasurer/Tax Collector	Karen Vogel	General Government

## Appointed Officials

Agricultural Commissioner/APCD/Airport	Stephen Birdsall	Public Protection
Behavioral Health	Michael Horn	Health and Sanitation
Central Duplicating	Ted Turner	General Government
Child Support Services	George Holbrook	Public Assistance
Clerk of the Board	Sylvia Bermudez	General Government
County Executive Officer	Robertta Burns	General Government
Cooperative Extension	Eric Natwick	Education
County Counsel	Ralph Cordova Jr.	General Government
County Free Library	Connie Barrington	Education
Court Executive Officer/Jury Commissioner	Jose Guillen	Public Protection
EEO/ADA	(Vacant)	General Government
Fire Protection/Emergency Services	Fred Nippins	Public Protection
GSA Facilities Management Parks & Recreation	Joe Solis	General Government
GSA Garage	Hector Baca	General Government
GSA Info/Technical Services	(Vacant)	General Government
GSA Procurement Services	Ted Turner	General Government
Health Services/Animal Control/EHS/EMS	Robin Hodgkin	Health and Sanitation
Human Resources and Risk Management	Ron Grassi	General Government
Office of Employment Training	Sam Couchman	Public Assistance
Planning/Building/Community & Economic Development	Jurg Heuberger	Public Protection
Probation/Receiving Home/Juvenile Hall	Michael Kelley	Public Protection
Public Defender	Timothy Reilly	Public Protection
Public Works	William Brunet	Public Ways/Facilities
Social Services	James Semmes	Public Assistance
Veterans Services	Stephen Russel	Public Assistance





## **FINANCIAL SECTION**

- Independent Auditors' Report
- Management's Discussion and Analysis
- Basic Financial Statements
- Notes to Financial Statements
- Required Supplementary Information







## INDEPENDENT AUDITORS' REPORT

Board of Supervisors  
County of Imperial  
El Centro, California 92243

We have audited the accompanying financial statements of the governmental activities, the business type activities, the aggregate discretely presented component unit, each major fund and the aggregate remaining fund information of the County of Imperial, California, as of and for the year ended June 30, 2006, which collectively comprise the County's basic financial statements as listed in the table of contents. The financial statements are the responsibility of the County of Imperial, California's management. Our responsibility is to express an opinion on these financial statements based on our audit.

We conducted our audit in accordance with auditing standards generally accepted in the United States of America and the standards applicable to financial audits contained in *Government Auditing Standards* issued by the Comptroller General of the United States. Those standards require that we plan and perform the audit to obtain reasonable assurance about whether the financial statements are free of material misstatement. An audit includes examining, on a test basis, evidence supporting the amounts and disclosures in the financial statements. An audit also includes assessing the accounting principles used and significant estimates made by management, as well as evaluating the overall financial statement presentation. We believe that our audit provides a reasonable basis for our opinion.

In our opinion, the financial statements referred to above present fairly, in all material respects, the financial position of the governmental activities, the business type activities, the aggregate discretely presented component unit, each major fund and the aggregate remaining fund information of the County of Imperial, California, as of June 30, 2006, and the respective changes in financial position and the cash flows for the year then ended in conformity with accounting principles generally accepted in the United States of America.

In accordance with *Government Auditing Standards*, we have also issued our report dated March 23, 2007 on our consideration of the County of Imperial, California's internal control over financial reporting and our tests of its compliance with certain provisions of laws, regulations, contracts, and grants agreements and other matters. The purpose of that report is to describe the scope of our testing of internal control over financial reporting and compliance and the results of that testing, and not to provide an opinion on the internal control over financial reporting or on compliance. That report is an integral part of an audit performed in accordance with *Government Auditing Standards* and should be considered in assessing the results of our audit.

The Management's Discussion and Analysis and budgetary comparison information on page 10 through 18, and pages 53 through 54, respectively, are not a required part of the basic financial statements but are supplementary information required by accounting principles generally accepted in the United States of America. We have applied certain limited procedures, which consist primarily of inquiries of management regarding the methods of measurement and presentation of the supplementary information. However, we did not audit the information and express no opinion on it.

Our audit was performed for the purpose of forming an opinion on the financial statements that collectively comprise the County of Imperial, California, basic financial statements taken as a whole. The introductory section, combining and individual nonmajor fund financial statements, are presented for the purposes of additional analysis and are not a required part of the basic financial statements. The accompanying schedule of expenditures of federal awards is presented for purposes of additional analysis as required by U.S. Office of Management and Budget Circular A-133, *Audits of States, Local Governments, and Non-Profit Organizations*, and is also not a required part of the basic financial statements of the County of Imperial. The combining and individual nonmajor fund financial statements and the schedule of expenditures of federal awards, have been subjected to the auditing procedures applied in the audit of the basic financial statements and, in our opinion, are fairly stated, in all material respects, in relation to the basic financial statements taken as a whole. The introductory section has not been subjected to the auditing procedures applied in the audit of the basic financial statements and, accordingly, we express no opinion on it.

*Hutchinson and Bloodgood LLP*

March 23, 2007

**County of Imperial**  
**Management's Discussion and Analysis**  
**For the Year Ended June 30, 2006**

---

The discussion and analysis of the financial performance of the County of Imperial (County) provides an overview of the County's financial activities for the year ended June 30, 2006. The intent of this discussion and analysis is to look at the County's financial performance as a whole: users of these financial statements should read this discussion and analysis in conjunction with the transmittal letter at the front of this report and the County's basic financial statements following this section to enhance their understanding of the County's financial performance. All amounts, unless otherwise indicated, are expressed in thousands of dollars.

### **FINANCIAL HIGHLIGHTS**

- The assets of the County exceeded its liabilities at the close of the 2005-2006 fiscal year by \$104,301 (*Net Assets*). \$3,136 is *Unrestricted Net Assets*. Of this amount \$66,351 may be used to meet the County's ongoing obligations to citizens and the creditors, (\$63,215) is the obligation for Pension Bonds and \$21,660 (*Restricted Net Assets*) may be used for the County's ongoing obligations with external restrictions. (See detail at Table 1).
- The County's net assets increased by \$29,876 during the current fiscal year. Governmental activities increased the County's net assets by \$28,083; also, business-type activities net assets increased by \$1,793.
- As of June 30, 2006, the County's governmental funds reported total ending fund balances of \$71,594, a increase of 18.51% in comparison with the prior year. Approximately 23.20% or \$15,722 is available for spending (*Unreserved fund balance*). See further discussion in Financial Analysis of the County's Funds on pages 12-16.
- At the end of the current fiscal year, unreserved fund balance for the General Fund was \$8,415 or 5.25 % of total General Fund expenditures.
- The County's total long-term debt decreased in the amount of (\$3,755) in comparison with the prior year. Compensated absences increased by \$192 and existing long-term debt decreased in 2005-2006.

### **OVERVIEW OF THE FINANCIAL STATEMENTS**

This discussion and analysis is intended to serve as an introduction to the County's basic financial statements. These statements are organized so that readers can understand the County of Imperial as a financial whole or as an entire operating entity. The County's basic financial statements are comprised of three components: 1) Government-wide financial statements; 2) Fund financial statements; and 3) Notes to the financial statements. This report also contains other supplementary information in addition to the financial statements themselves.

#### **1. Government-wide Financial Statements**

The government-wide financial statements are designed to provide readers with a broad overview of the County's finances, in a manner similar to a private-sector business.

The Statement of Net Assets presents information on all of the County's assets and liabilities, with the difference between the two reported as net assets. Over time, increases and decreases in net assets may serve as a useful indicator of whether the financial position of the County is improving or deteriorating.

The Statement of Activities presents information showing how the County's net assets changed during the most recent fiscal year. All changes in net assets are reported as soon as the underlying event takes place regardless of when cash is received or paid. Thus, some revenues and expenses are reported in this statement for some items that will only result in cash inflows and outflows in future fiscal years.

## Management's Discussion and Analysis (Continued)

Both the Statement of Net Assets and the Statement of Activities distinguishes between activities that are primarily financed with taxes and intergovernmental revenues (governmental activities) and those that are intended to recover all or a significant portion of their costs through user fees and charges for services (business-type activities). The County's governmental activities include general government, public protection, public ways and facilities, health and sanitation, public assistance, and education. The business-type activities of the County include the operation of the Imperial Airport, Closure/Postclosure (Landfill) and other County Service Areas (CSAs).

Component units are included in our basic financial statements and consist of legally separate entities for which the County is financially accountable and that have substantially the same board as the County or provide services entirely to the County. An example of the County's blended component unit is the Imperial County Employees' Retirement Association (ICERA). The Children and Families First Commission (the Commission) is reported as a discretely presented component unit because there is some financial accountability by the Commission to the County Board.

The government-wide financial statements are presented on pages 19-20 of this report.

### 2. Fund Financial Statements

The fund financial statements provide detailed information about the most significant funds - not the County as a whole. A fund is a fiscal and accounting entity designated to report information about groupings of related accounts which are used to maintain control over resources that have been segregated for specific activities or attaining certain objectives in accordance with specific regulations, restrictions, or limitations. All of the County's funds can be divided into three broad categories: governmental funds, proprietary funds, and fiduciary funds.

**Governmental funds** are used to account for activities that are similar in nature to the governmental activities in the government-wide financial statements. However, unlike the government wide financial statements, the governmental fund financial statements focus on near-term inflows and outflows of spendable resources, as well as on balances of spendable resources available at the end of the fiscal year. Such information may be used in evaluating Imperial County's near-term financing requirements and available resources.

Because the focus of governmental funds is narrower than that of the government-wide financial statements, it is useful to compare the information presented for governmental funds with similar information presented for governmental activities in the government-wide financial statements. This will allow readers to get a better understanding of the long-term impact of the government's near-term financing decisions. Both the governmental fund balance sheet and the governmental fund statement of revenues, expenditures, and changes in fund balances provide a reconciliation to facilitate this comparison between governmental funds and governmental activities.

The County reports three major individual governmental funds. Information is presented separately in the governmental fund balance sheet and in the governmental fund statement of revenues, expenditures, and changes in fund balances for each of the major funds. Data from the other governmental funds are combined into a single, aggregated presentation. Individual fund data for each of these non-major governmental funds is provided in the form of combining statements located in the *Combining and Individual Fund Statements and Schedules*.

The basic governmental fund financial statements are presented on pages 21-24 of this report.

## Management's Discussion and Analysis (Continued)

**Proprietary funds** are reported in two ways: enterprise funds and internal service funds. Enterprise funds are reported as functions presented as business-type activities in the government-wide financial statements. The County uses enterprise funds to account for the Imperial Airport, Landfills and other County Service Areas (CSAs) operations. Internal service funds are used to account for costs internally among the County's various functions. The County uses the following internal service funds: Garage, Central Duplicating, Centralized Mail, Flood Control, Communications Services, Liability Insurance, Workers' Compensation Insurance, Unemployment Insurance, Health and Dental/Vision Benefits, Medical Malpractice, and Auto Liability. Because such functions predominantly benefit governmental rather than business-type activities, they have been included within governmental activities in the government-wide financial statements.

Proprietary funds provide the same type of information as the government-wide financial statements, only in more detail. The proprietary fund financial statements provide separate information for Imperial Airport and Closure/Postclosure (Landfills), both of which are considered to be major funds of the County. All other enterprise funds have been combined into a single aggregated column for presentation. Internal service funds are combined into a single, aggregated presentation in the proprietary fund financial statements.

The basic proprietary fund financial statements are presented on pages 25-27 of this report.

**Fiduciary funds** are used to account for resources held for the benefit of parties outside the county government. Although these funds are presented in the fund set of statements, they do not appear in the government-wide financial statements because the resources of fiduciary funds are not available to support the County's own programs. The accounting used for fiduciary funds is much like that used for proprietary funds.

The basic fiduciary fund financial statements are presented on pages 28-29 of this report.

### 3. Notes to the Financial Statements

The notes provide additional information that is essential to a full understanding of the data provided in both government-wide and fund financial statements.

The notes to the financial statements are presented on pages 30-46 of this report.

### GOVERNMENT-WIDE FINANCIAL ANALYSIS

As noted earlier, net assets may serve over time as a useful indicator of a government's financial position. In the case of the County, assets exceeded liabilities by \$104,301 (see Table 1) at the close of the current fiscal year.

The largest portion of the County's net assets, \$79,505 reflects its investment in capital assets (e.g. land, structures and improvements, infrastructure, vehicles, furniture and equipment, and construction in progress), less any related outstanding debt used to acquire those assets. The County uses these capital assets to provide services to citizens; consequently, these assets are not available for future spending. Although the County's investment in its capital assets is reported net of related debt, it should be noted that the resources needed to repay this debt must be provided from other sources, since the capital assets themselves cannot be used to liquidate these liabilities.

## Management's Discussion and Analysis (Continued)

An additional portion of the County's net assets, \$21,660, represents resources that are subject to external restrictions on how they may be used. The major portion of the restricted net assets is constrained for debt repayment. The remaining balance of total net assets is \$3,136. Of which \$66,351 is unrestricted and may be used to meet the County's ongoing obligations to citizens and creditors, and (\$63,215) is obligation for Pension Bonds.

At the end of the current fiscal year, the County as a whole and for its governmental activities reported positive balances in three categories of net assets. In the business-type activities the County reported negative restricted net assets of (\$1,409). This is the result of an increase in operating expenses for the Closure/Postclosure (Landfill).

Table 1 – County of Imperial's Net Assets  
June 30, 2006 and June 30, 2005 (In Thousands)

	Governmental Activities		Business-Type Activities		Totals	
	2006	2005	2006	2005	2006	2005
<b>Assets:</b>						
Current Assets and Other Assets	\$ 116,417	\$ 102,247	\$ 7,300	\$ 7,615	\$123,717	\$109,862
Capital Assets	<u>81,235</u>	<u>78,897</u>	<u>6,215</u>	<u>5,106</u>	<u>87,450</u>	<u>84,003</u>
<b>Total Assets</b>	<u>197,652</u>	<u>181,144</u>	<u>13,515</u>	<u>12,721</u>	<u>211,167</u>	<u>193,865</u>
<b>Liabilities:</b>						
Current and Other Liabilities	18,276	26,096	227	161	18,503	26,257
Long-Term Liabilities	<u>80,327</u>	<u>84,082</u>	<u>8,036</u>	<u>9,101</u>	<u>88,363</u>	<u>93,183</u>
<b>Total Liabilities</b>	<u>98,603</u>	<u>110,178</u>	<u>8,263</u>	<u>9,262</u>	<u>106,866</u>	<u>119,440</u>
<b>Net Assets:</b>						
Invested in Capital Assets, Related Debt	73,290	69,910	6,215	5,106	79,505	75,016
Restricted	21,214	10,235	446	653)	21,660	10,088
Unrestricted	<u>4,545</u>	<u>(9,179)</u>	<u>(1,409)</u>	<u>(2,300)</u>	<u>3,136</u>	<u>(11,479)</u>
<b>Total Net Assets</b>	<u>\$ 99,049</u>	<u>\$ 70,966</u>	<u>\$ 5,252</u>	<u>\$ 3,459</u>	<u>\$ 104,301</u>	<u>\$ 74,425</u>

## Management's Discussion and Analysis (Continued)

As shown in Table 2, the County's net assets increased by \$29,875 from the prior year.

Table 2 - County of Imperial's Changes in Net Assets  
For the Years Ended June 30, 2006 and June 30, 2005 (In Thousands)

	Governmental Activities		Business-Type Activities		Totals	
	2006	2005	2006	2005	2006	2005
<b>Revenues:</b>						
Program Revenues:						
Charges for Services	\$ 81,707	\$ 69,132	\$ 1,819	\$ 1,098	\$ 83,526	\$ 70,230
Operating Grants and Contributions	143,428	124,198	2,131	1,795	145,559	125,993
General Revenues:						
Property Taxes	13,894	10,951	-	-	13,894	10,951
Property Tax In-Lieu Taxes	14,023	11,236	-	-	14,023	11,236
Sales Taxes	11,021	10,161	-	-	11,021	10,161
Franchise Taxes	480	708	-	-	480	708
Motor Vehicles In-Lieu Taxes	619	3,813	-	-	619	3,813
Federal In-Lieu Taxes	250	855	-	-	250	855
Unrestricted Investment Earnings	2,595	1,960	194	158	2,789	2,118
Gain on Sales of Fixed Assets	473	457	-	-	473	457
Other	15,545	12,142	(101)	-	15,444	12,142
<b>Total Revenues</b>	<u>284,035</u>	<u>245,613</u>	<u>4,043</u>	<u>3,051</u>	<u>\$288,078</u>	<u>248,664</u>
<b>Expenses:</b>						
General Government	52,251	52,221	-	-	52,251	52,221
Public Protection	62,722	56,879	-	-	62,722	56,879
Health and Sanitation	33,545	30,450	-	-	33,545	30,450
Public Assistance	87,353	83,775	-	-	87,353	83,775
Public Ways and Facilities	14,315	10,701	-	-	14,315	10,701
Interest on Long-Term Liabilities	4,098	6,034	-	-	4,098	6,034
Airport	-	-	1,045	936	1,045	936
Closure/Postclosure Waste	-	-	-	24	-	24
County Service Areas, other	-	-	2,873	2,122	2,873	2,122
<b>Total Expenses</b>	<u>254,284</u>	<u>240,060</u>	<u>3,918</u>	<u>3,082</u>	<u>258,203</u>	<u>243,142</u>
Increases (Decreases) in Net Assets						
Before Transfers	29,751	5,553	125	(31)	29,876	5,522
Transfers In and Out	(1,668)	-	1,668	-	-	-
<b>Increase (Decrease) in Net Assets</b>	<u>\$ 28,083</u>	<u>\$ 5,553</u>	<u>\$ 1,793</u>	<u>\$ (31)</u>	<u>\$ 29,876</u>	<u>\$ 5,522</u>

## Management's Discussion and Analysis (Continued)

### Governmental Activities

Governmental activities increased the County's net assets by \$28,083 for the year ended June 30, 2006, thereby accounting for 49.66% the total increase in the net assets of the County. Key elements of this increase were fueled by a hiring freeze and budget cuts.

- Total revenue for the County's governmental activities increased 15.33%.
- The County's long-term debt decreased by 4.67%.
- As an arm of the state government, operating grants and contributions serve multiple programs, representing 79.21% of the County's program revenue for governmental activities, and are tied to mandated services such as public assistance, health, and mental health. These revenue sources increased 16.05% over the prior year primarily to decreased funding related to mandated programs.
- Taxes and investment earnings that are generated locally provide the Board of Supervisors (Board) with most of its discretionary spending power. Property taxes and Property Tax In-Lieu increased 25.83% due to property tax shift required by State. Also, because of this shift Motor Vehicle In-Lieu revenues decreased 15.99%.
- Total expenses for governmental activities increased by 2.34% with increases in all major functions. The County's major cost component is salaries and benefits.
- The County recorded \$15,545 in revenue for the current fiscal year, which is classified as an other item, which includes transit occupancy tax \$35, deed transfer \$1,336, fines and forfeitures of \$6,049 other taxes \$1,697 and other contributions \$6,428.

### Business-type Activities

Business-type activities' net assets increased the County's net assets by \$1,793. The main reason for this was a transfer of fixed assets for the governmental funds to the Imperial Airport in the amount of \$1,668.

### Financial Analysis of the Government's Funds

As noted earlier, the County uses fund accounting to ensure and demonstrate compliance with finance related legal requirements.

### Governmental Funds

The focus of the County's governmental funds is to provide information on near-term inflows, outflows, and balances of spendable resources. Such information is useful in assessing the County's financing requirements. In particular, unreserved fund balance may serve as a useful measure of a government's net resources available for spending at the end of the fiscal year.

At June 30, 2006, The County's governmental funds reported total fund balances of \$71,594, a 18.51% increase in comparison with the prior year. Approximately 21.96% or \$15,722 of the total fund balances constitutes unreserved fund balance, which is available to meet the County's current and future needs. The remainder of fund balance is reserved to indicate that it is not available for new spending because it has been committed to 1) to pay debt service \$4,128, 2) to reflect CDBG loans receivable in which the County acts as a conduit for intergovernmental loans to entities within the County \$72, 3) to reflect COP monies \$1,829, 4) reserved for monies received from tobacco settlement endowment fund \$25,207, 5) reserved for prior year encumbrances \$13,139 and 6) a variety of other restricted purposes \$11,497.



## **Management's Discussion and Analysis (Continued)**

The County's management may also designate unreserved fund balance to a particular function, project, or activity; however designated fund balance is available for appropriations at any time.

The General Fund is the chief operating fund of the County. At June 30, 2006, unreserved fund balance of the General Fund was \$8,415. As a measure of the General Funds' liquidity, it may be helpful to compare both unreserved fund balance and fund balance to total fund expenditures. Unreserved fund balance represents 5.25% of total General Fund expenditures, while total fund balance represents 26.34% of total General Fund expenditures.

Revenues for governmental functions totaled \$226,944 at June 30, 2006, which represents an increase of 6.07% from fiscal year 2004-2005. The largest increases in revenues were in Intergovernmental Aid revenues, which increased 13.90% and was primarily due to increases in reimbursements from State agencies.

Expenditures for government functions totaled \$226,219 at June 30, 2006 which represents an increase of 8.14% from fiscal year 2004-05. The largest increases occurred in public protection and public ways and facilities, which increased 13.93% and in addition, public ways and facilities, health, sanitation, and public assistance increased by approximately 5.35%.

### **Proprietary Funds**

The proprietary fund provides similar information to the government-wide financial statements, but in more detail.

The net assets of the enterprise funds increased by \$1,793. The main reason for this is a transfer of fixed assets from the governmental funds to the Imperial Airport in the amount of \$1,668.

The internal service funds carried \$29,047 in unrestricted net assets as a result of a decrease in claims insurance liabilities. Also, a change in medical insurance design reduced costs. Claims payable were \$7,051 at June 30, 2006.

### **GENERAL FUND BUDGETARY HIGHLIGHTS**

Differences between the original budget and the final amended budget resulted in a \$8,168, increase in appropriations that is briefly summarized as follows:

- \$2,962 increase in the County's Health and Sanitation appropriations was the result of unanticipated grants initiatives.
- \$243 increase in the County's Public Assistance appropriations represents increase program costs for various social services programs.
- \$1,859 increase in the County's Public Protection appropriations was the result of unanticipated grants for initiatives.
- \$3,104 of the increase in the County's appropriations was the result of unanticipated grants and contributions from other governments. The remaining portion consisted of small increases in appropriations for normal operations in the remaining forty-eight budget units that comprise the General Fund.

## Management's Discussion and Analysis (Continued)

### CAPITAL ASSET AND DEBT ADMINISTRATION

#### Capital Assets

As of June 30, 2006, the County's investment in capital assets for its governmental and business-type activities amounted to \$87,450 (net of accumulated depreciation). The investments in capital assets are comprised of land, infrastructure, structures and improvements, furniture and equipment, vehicles, and construction in progress. The County, according to GASB 34 guidelines, has elected retroactively to include all infrastructure assets dating back to 1980.

Table 3 –County of Imperial's Capital Assets (Net of accumulated depreciation) (In Thousands)

	Governmental Activities		Business-Type Activities		Totals	
	2006	2005	2006	2005	2006	2005
Land	\$ 4,083	\$ 4,083	\$ 685	\$ 685	\$ 4,768	\$ 4,768
Construction in Progress	5,896	1,723	-	-	5,896	1,723
Infrastructure	34,303	35,689	-	-	34,303	35,689
Structures and Improvements	24,792	25,411	5,513	4,399	30,305	29,810
Vehicles	3,265	3,114	-	-	3,265	3,114
Furniture and Equipment	8,896	8,877	17	22	8,913	8,899
<b>Total</b>	<b><u>\$ 81,235</u></b>	<b><u>\$ 78,897</u></b>	<b><u>\$ 6,215</u></b>	<b><u>\$ 5,582</u></b>	<b><u>\$87,450</u></b>	<b><u>\$ 84,003</u></b>

The major capital events during the current fiscal year include the following:

- A variety of small construction and rehabilitation projects were started during the current fiscal year: road paving projects, and several others remodeling projects.

#### Long-Term Debt

At the end of the current fiscal year, the County had total long-term debt outstanding of \$80,330. This amount is comprised of \$6,500 of certificates of participation, \$63,215 represents debt outstanding for the pension obligation bond. \$7,821 in earned compensated absences, \$1,350 State of California Child Support claim, and \$1,444 capital lease obligations.

Table 4 – County of Imperial's Outstanding Debt (In Thousands)

	Governmental Activities		Business-Type Activities		Totals	
	2006	2005	2006	2005	2006	2005
Employee Compensated Absences	\$ 7,818	\$ 7,818	\$ 3	\$ 4	\$ 7,821	\$ 7,822
Capital Lease Obligation	1,444	1,642	-	-	1,444	1,642
St. of California Child Support Claim	1,350	2,932	-	-	1,350	2,932
Pension Funding Bonds 1997	29,950	31,080	-	-	29,950	31,080
Pension Funding Bonds 2002	33,265	33,265	-	-	33,265	33,265
1999 Certificates of Participation	6,500	7,345	-	-	6,500	7,345
<b>Total</b>	<b><u>\$ 80,327</u></b>	<b><u>\$ 84,082</u></b>	<b><u>\$ 3</u></b>	<b><u>\$ 4</u></b>	<b><u>\$ 80,330</u></b>	<b><u>\$ 84,086</u></b>

## **Management's Discussion and Analysis (Continued)**

### **ECONOMIC FACTORS AND NEXT YEAR'S BUDGETS AND RATES**

The County currently faces a less than favorable economic environment. Due to the County being heavily dependent on agriculture, it experiences chronically high unemployment, which puts pressure on the County to provide social and medical services.

The County's general revenues, sometimes referred to as discretionary revenues, continue to experience little to no growth. At the same time, the portion of the County's budget that rely on these revenues continue to experience increased costs due to cost of living and medical insurance increases.

The State's budget cuts for local governments remain the major determining factors in determining the County's budget for fiscal year 2005-06 and beyond, as the County is again required to contribute property tax revenues to the State budget in 2005-06. The State has historically reduced city and county revenues in order to help balance their own budget.

### **REQUESTS FOR INFORMATION**

This financial report is designed to provide our citizens, taxpayers, creditors, and investors with a general overview of the County's finances and to show the County's accountability for the money it receives. If you have any questions about this report or need additional financial information, contact Mr. Douglas R. Newland, CPA, Imperial County Auditor-Controller, 940 Main Street, Suite 108, El Centro, California, 92243, (760) 482-4556 or visit the website at [www.imperialcounty.net](http://www.imperialcounty.net)



**COUNTY OF IMPERIAL**

**Statement of Net Assets**

**June 30, 2006**

(amounts expressed in thousands)

	<u>Governmental Activities</u>	<u>Business-Type Activities</u>	<u>Total</u>	<u>Component Unit</u>
<b>Assets:</b>				
Cash and cash equivalents	\$ 60,747	\$ 7,274	\$ 68,021	\$ 5,397
Cash with Fiscal Agent	27,090	-	27,090	-
Deposits with Others	115	-	115	-
Receivables (net):				
Accounts	9,311	-	9,311	-
Interest	744	49	793	35
Taxes	2,403	-	2,403	-
Loans	6,730	-	6,730	-
Internal balances	23	(23)	-	-
Due from other governmental funds	8,674	-	8,674	-
Inventories and Prepaid Expenses	580	-	580	-
Capital assets (net of accumulated depreciation):				
Land	4,083	685	4,768	-
Construction in progress	5,896	-	5,896	-
Structures & Improvements-net	24,792	5,513	30,305	-
Vehicles-net	3,265	-	3,265	-
Furniture & Equipment-net	8,896	17	8,913	2
Infrastructure	34,303	-	34,303	-
Total assets	<u>197,652</u>	<u>13,515</u>	<u>211,167</u>	<u>5,434</u>
<b>Liabilities:</b>				
Claims payable	7,051	-	7,051	-
Accounts payable	3,280	223	3,503	27
Accrued payroll	2,807	4	2,811	-
Interest payable	17	-	17	-
Due to other governmental funds	5,121	-	5,121	-
Noncurrent liabilities:				
Due within one year	2,836	-	2,836	-
Due in more than one year	77,491	8,036	85,527	-
Total liabilities	<u>98,603</u>	<u>8,263</u>	<u>106,866</u>	<u>27</u>
<b>Net Assets:</b>				
Invested in capital assets, net of related debt	73,290	6,215	79,505	2
Restricted for:				
Special revenue	15,441	-	15,441	-
Capital projects	1,645	-	1,645	-
Debt service	4,128	-	4,128	-
Public ways & facilities	-	446	446	-
Unrestricted	4,545	(1,409)	3,136	5,405
Total net assets	<u>\$ 99,049</u>	<u>\$ 5,252</u>	<u>\$ 104,301</u>	<u>\$ 5,407</u>

The notes to the financial statements are an integral part of this statement.

**COUNTY OF IMPERIAL**  
**Statement of Activities**  
Year Ended June 30, 2006  
(amounts expressed in thousands)

Functions	Program Revenues				Net (Expense) Revenues and Changes in Net Asset			
	Expenses	Charges for Services	Operating Grants and Contributions	Capital Grants and Contributions	Primary Government			Component Unit
					Governmental Activities	Business-Type Activities	Total	
<b>Primary Government:</b>								
Governmental Activities								
General Government	\$ 52,251	\$ 43,043	\$ 5,894	\$ -	\$ (3,314)	\$ -	\$ (3,314)	\$ -
Public Protection	62,722	25,021	20,820	-	(16,881)	-	(16,881)	-
Health & Sanitation	33,545	7,495	26,361	-	311	-	311	-
Public Assistance	87,353	1,200	80,344	-	(5,809)	-	(5,809)	-
Public Ways & Facilities	14,315	4,948	10,009	-	642	-	642	-
Interest on long-term liabilities	4,098	-	-	-	(4,098)	-	(4,098)	-
Total Governmental Activities	<u>254,284</u>	<u>81,707</u>	<u>143,428</u>	<u>-</u>	<u>(29,149)</u>	<u>-</u>	<u>(29,149)</u>	<u>-</u>
Business Activities								
Airport	1,045	557	-	-	-	(488)	(488)	-
Closure/Postclosure	-	1,153	-	-	-	1,153	1,153	-
Other	2,873	109	2,131	-	-	(633)	(633)	-
Total Business Type Activities	<u>3,918</u>	<u>1,819</u>	<u>2,131</u>	<u>-</u>	<u>-</u>	<u>32</u>	<u>32</u>	<u>-</u>
Total Primary Government	<u>\$ 258,202</u>	<u>\$ 83,526</u>	<u>\$ 145,559</u>	<u>\$ -</u>	<u>\$ (29,149)</u>	<u>\$ 32</u>	<u>\$ (29,117)</u>	<u>\$ -</u>
<b>Component Units:</b>								
Children and Families First Commission	\$ 2,088	\$ -	\$ 2,708	\$ -	\$ -	\$ -	\$ -	\$ 620
Total Component Units	<u>\$ 2,088</u>	<u>\$ -</u>	<u>\$ 2,708</u>	<u>\$ -</u>	<u>\$ -</u>	<u>\$ -</u>	<u>\$ -</u>	<u>\$ 620</u>
<b>General Revenues:</b>								
Property Tax					13,894	-	13,894	-
Property Tax In Lieu					14,023	-	14,023	-
Sales Tax					11,021	-	11,021	-
Franchises Tax					480	-	480	-
Motor Vehicle In-Lieu Taxes					619	-	619	-
Federal In-Lieu Taxes					250	-	250	-
Other					15,545	(101)	15,444	2
Unrestricted Investment Earnings					2,595	194	2,789	132
Loss on Sales of Fixed Assets					473	-	473	-
Transfers In (Out)					(1,668)	1,668	-	-
Total general revenues					<u>57,232</u>	<u>1,761</u>	<u>58,993</u>	<u>134</u>
Change in net assets					<u>28,083</u>	<u>1,793</u>	<u>29,876</u>	<u>754</u>
<b>Net assets - beginning</b>					<u>70,966</u>	<u>3,459</u>	<u>74,425</u>	<u>4,653</u>
<b>Net assets - ending</b>					<u>\$ 99,049</u>	<u>\$ 5,252</u>	<u>\$ 104,301</u>	<u>\$ 5,407</u>

The notes to the financial statements are an integral part of this statement.

**COUNTY OF IMPERIAL**  
**Balance Sheet**  
**Governmental Funds**  
June 30, 2006  
(amounts expressed in thousands)

	<u>General</u>	<u>Special Revenue Funds</u>	<u>Other Governmental Funds</u>	<u>Total Governmental Funds</u>
<b>Assets:</b>				
Cash and cash equivalents	\$ 4,432	\$ 18,423	\$ 4,905	\$ 27,760
Cash with Fiscal Agent	27,037	53	-	27,090
Deposits with Others	-	115	-	115
Receivables (net):				
Accounts	8,083	1,180	21	9,284
Interest	363	141	30	534
Taxes	1,887	516	-	2,403
Loan	-	6,730	-	6,730
Due from other funds	7,314	772	-	8,086
Inventories and Prepaid Expenses	275	238	-	513
	<u>49,391</u>	<u>28,168</u>	<u>4,956</u>	<u>82,515</u>
Total assets	<u>\$ 49,391</u>	<u>\$ 28,168</u>	<u>\$ 4,956</u>	<u>\$ 82,515</u>
<b>Liabilities and Fund Balances:</b>				
<b>Liabilities:</b>				
Accounts payable	\$ 1,861	\$ 1,034	\$ 146	\$ 3,041
Accrued payroll	2,190	556	-	2,746
Interest payable	-	12	3	15
Due to other funds	3,154	1,965	-	5,119
	<u>7,205</u>	<u>3,567</u>	<u>149</u>	<u>10,921</u>
Total Liabilities	<u>7,205</u>	<u>3,567</u>	<u>149</u>	<u>10,921</u>
<b>Fund Balances:</b>				
<b>Reserved for:</b>				
General	3,148	-	-	3,148
Encumbrances	2,259	9,237	1,644	13,140
Inventories	275	238	-	513
Debt service	-	-	4,128	4,128
Capital Outlay	1,023	-	-	1,023
Loan	-	6,845	1	6,846
COPS	1,829	-	-	1,829
Endowment Op Funds	25,207	-	-	25,207
Other	30	8	-	38
<b>Unreserved, reported in</b>				
General Fund	8,415	-	-	8,415
Special Revenue Funds	-	8,273	-	8,273
Capital Projects Funds	-	-	(966)	(966)
	<u>42,186</u>	<u>24,601</u>	<u>4,807</u>	<u>71,594</u>
Total Fund Balances	<u>42,186</u>	<u>24,601</u>	<u>4,807</u>	<u>71,594</u>
Total Liabilities and Fund Balances	<u>\$ 49,391</u>	<u>\$ 28,168</u>	<u>\$ 4,956</u>	<u>\$ 82,515</u>

The notes to the financial statements are an integral part of this statement.

**COUNTY OF IMPERIAL**  
**Reconciliation of the Balance Sheet of Governmental Funds**  
**to the Statement of Net Assets**  
June 30, 2006  
(amounts expressed in thousands)

---

Amounts reported for governmental activities in the statement of net assets are different because:

<b>Total fund balance - governmental funds</b>	\$	71,594
Capital assets used in governmental activities are not financial resources and, therefore, are not reported in the funds. The cost of the assets is \$168,258 and the accumulated depreciation is \$89,676.		78,582
Internal service funds are used by management to charge the costs of motor pool, printing, mail system, communications, and insurance to individual funds. The assets and liabilities of the internal service funds are included in governmental activities in the statement of net assets.		29,047
Long-term liabilities, including bonds payable, are not due and payable in the current period and therefore are not reported in the funds.		(80,174)
<b>Total net assets - governmental activities</b>	<b>\$</b>	<b><u>99,049</u></b>

The notes to the financial statements are an integral part of this statement.



**COUNTY OF IMPERIAL**  
**Statement of Revenues, Expenditures, and Changes in Fund Balances**  
**Governmental Funds**  
Year Ended June 30, 2006  
(amounts expressed in thousands)

	<u>General</u>	<u>Special Revenue Funds</u>	<u>Other Governmental Funds</u>	<u>Total Governmental Funds</u>
<b>Revenues:</b>				
Taxes	\$ 22,440	\$ 3,261	\$ -	\$ 25,701
Licenses and permits	2,089	1,560	-	3,649
Fines, Forfeitures & Penalties	4,441	1,373	192	6,006
Use of Money & Property	2,660	645	142	3,447
State aid	74,774	34,253	-	109,027
Federal aid	35,328	7,082	1,451	43,861
Charges for Services	19,278	9,708	190	29,176
Sale of Fixed Assets	-	-	-	-
Other Revenues	-	185	5,892	6,077
Total revenues	<u>161,010</u>	<u>58,067</u>	<u>7,867</u>	<u>226,944</u>
<b>Expenditures:</b>				
Current:				
General Government	19,157	437	8,692	28,286
Public Protection	48,624	14,097	-	62,721
Health & Sanitation	27,150	6,394	-	33,544
Public Assistance	64,623	22,730	-	87,353
Public Ways & Facilities	585	13,730	-	14,315
Total expenditures	<u>160,139</u>	<u>57,388</u>	<u>8,692</u>	<u>226,219</u>
Excess (deficiency) of revenues over (under) expenditures	<u>871</u>	<u>679</u>	<u>(825)</u>	<u>725</u>
<b>Other financing sources (uses):</b>				
Changes in Reserves	-	3,553	-	3,553
Transfers	-	-	-	-
Endowment Funds	7,061	-	-	7,061
COP Bonds Uses	(158)	-	-	(158)
Encumbrances	-	-	-	-
Proceeds of COP bonds	-	-	-	-
Sale of capital assets	-	-	-	-
Total other financing sources (uses)	<u>6,903</u>	<u>3,553</u>	<u>-</u>	<u>10,456</u>
Net change in fund balances	7,774	4,232	(825)	11,181
<b>Fund balances - beginning</b>	<u>34,412</u>	<u>20,369</u>	<u>5,632</u>	<u>60,413</u>
<b>Fund balances - ending</b>	<u>\$ 42,186</u>	<u>\$ 24,601</u>	<u>\$ 4,807</u>	<u>\$ 71,594</u>

The notes to the financial statements are an integral part of this statement.

**COUNTY OF IMPERIAL**  
**Reconciliation of the Statement of Revenues, Expenditures, and Changes in**  
**Fund Balances of Government Funds to the Statement of Activities**  
Year Ended June 30, 2006  
(amounts expressed in thousands)

---

Amounts reported for governmental activities in the statement of activities are different because:

**Net change in fund balances-total governmental funds** \$ 11,181

Governmental funds report capital outlays as expenditures. However, in the statement of activities, assets with an initial, individual cost of more than \$2,500 are capitalized and the cost is allocated over their estimated useful lives and reported as depreciation expense. This is the amount by which capital outlays exceeded depreciation in the current period.

Capital outlays	\$	12,561	
Loss on disposal of capital assets		(763)	
Proceeds from sales of capital assets		10	
Depreciation expense		<u>(6,003)</u>	5,805

Additional accrued interest calculated on bonds payable 4,098

Long-term liabilities, including bonds payable, increased during the year in the amount of \$342,840. (3,755)

In the statement of activities, certain operating expenses -- compensated absences (vacations, sick leave, and comptime earned) -- are measured by the amounts earned during the year.

In the governmental funds, however, expenditures for these items are measured by the amount of financial resources used (essentially, the amounts actually paid). During this year, compensated absences decreased by (\$198,585). (199)

Internal service funds are used by the County to charge the costs of industrial insurance, printing, and warehouse services to individual funds. The net revenue of the internal service funds is reported with governmental activities.

10,953

**Change in net assets of governmental activities**

\$ 28,083

**COUNTY OF IMPERIAL**  
**Statement of Net Assets**  
**Proprietary Funds**  
June 30, 2006  
(amounts expressed in thousands)

	<b>Business-type Activities-Enterprise Funds</b>				<b>Governmental</b>
	<b>Imperial Airport</b>	<b>Closure/ Postclosure</b>	<b>Other</b>	<b>Total</b>	<b>Activities</b>
			<b>Enterprise Funds</b>		<b>Internal Service Funds</b>
<b>ASSETS:</b>					
Current Assets:					
Cash and cash equivalents	\$ (30)	\$ 7,105	\$ 199	\$ 7,274	\$ 32,987
Receivables (net):					
Accounts	-	-	-	-	27
Interest	-	47	2	49	210
Due from Other Funds	-	-	-	-	610
Inventories and Prepaid Expenses	-	-	-	-	67
Total Current Assets	<u>(30)</u>	<u>7,152</u>	<u>201</u>	<u>7,323</u>	<u>33,901</u>
Noncurrent Assets:					
Land	662	-	23	685	23
Construction in process	-	-	-	-	-
Structures & Improvements	12,407	-	50	12,457	163
Vehicles	-	-	-	-	5,998
Equipment	75	-	-	75	2,124
Accumulated Depreciation	<u>(6,951)</u>	<u>-</u>	<u>(50)</u>	<u>(7,001)</u>	<u>(5,656)</u>
Total Noncurrent Assets	<u>6,193</u>	<u>-</u>	<u>23</u>	<u>6,216</u>	<u>2,652</u>
Total Assets	<u>\$ 6,163</u>	<u>\$ 7,152</u>	<u>\$ 224</u>	<u>\$ 13,539</u>	<u>\$ 36,553</u>
<b>LIABILITIES:</b>					
Current Liabilities:					
Claims Payable	-	-	-	-	7,051
Accounts Payable	11	-	212	223	239
Interest Payable	-	-	-	-	2
Accrued Payroll	2	-	2	4	61
Due to Other Funds	22	-	-	22	1
Current portion of compensated absences	(1)	-	-	(1)	(1)
Capital Lease Obligations-					
Current Portion	-	-	-	-	-
Total Current Liabilities	<u>34</u>	<u>-</u>	<u>214</u>	<u>248</u>	<u>7,353</u>
Noncurrent Liabilities:					
Compensated Absences	1	-	3	4	153
Accrued Closure/Postclosure	-	8,033	-	8,033	-
Capital Lease Obligations-					
Net of Current Portion	-	-	-	-	-
Total Noncurrent Liabilities	<u>1</u>	<u>8,033</u>	<u>3</u>	<u>8,037</u>	<u>153</u>
Total Liabilities	<u>35</u>	<u>8,033</u>	<u>217</u>	<u>8,285</u>	<u>7,506</u>
<b>NET ASSETS:</b>					
Invested in Capital Assets, net of related debt	6,192	-	23	6,215	2,652
Restricted	6	-	440	446	(4,281)
Unrestricted	<u>(71)</u>	<u>(881)</u>	<u>(457)</u>	<u>(1,409)</u>	<u>30,676</u>
Total Net Assets	<u>\$ 6,127</u>	<u>\$ (881)</u>	<u>\$ 6</u>	<u>\$ 5,252</u>	<u>\$ 29,047</u>

The notes to the financial statements are an integral part of this statement

**COUNTY OF IMPERIAL**  
**Statement of Revenues, Expenses and Changes in Net Assets**  
**Proprietary Funds**  
For the Fiscal Year Ended June 30, 2006  
(amounts expressed in thousands)

	<b>Business-type Activities-Enterprise Funds</b>				<b>Governmental Activities</b>
	<b>Imperial Airport</b>	<b>Closure/ Postclosure</b>	<b>Other Enterprise Funds</b>	<b>Total</b>	<b>Internal Service Funds</b>
<b>Operating Revenues:</b>					
Charges for Services	\$ 557	\$ 1,153	\$ 109	\$ 1,819	\$ 33,009
Other Revenues	-	-	-	-	3
Total Operating Revenues	<u>557</u>	<u>1,153</u>	<u>109</u>	<u>1,819</u>	<u>33,012</u>
<b>Operating Expenses:</b>					
Salaries and Benefits	109	-	75	184	2,044
Services and Supplies	379	-	2,798	3,177	21,111
Depreciation	557	-	-	557	842
Total Operating Expenses	<u>1,045</u>	<u>-</u>	<u>2,873</u>	<u>3,918</u>	<u>23,997</u>
Operating Income (Loss)	<u>(488)</u>	<u>1,153</u>	<u>(2,764)</u>	<u>(2,099)</u>	<u>9,015</u>
<b>Non-operating Revenues (Expenses):</b>					
Gain (Loss) on Sale of Fixed Assets	-	-	-	-	197
State Aid	-	-	2,131	2,131	-
Federal Aid	-	-	-	-	-
Changes in Designated Reserve	-	-	-	-	1,030
Other	(101)	-	-	(101)	-
Interest - Income	2	182	10	194	711
Total Non-Operating Revenues	<u>(99)</u>	<u>182</u>	<u>2,141</u>	<u>2,224</u>	<u>1,938</u>
Net Income (Loss) before Transfers	<u>(587)</u>	<u>1,335</u>	<u>(623)</u>	<u>125</u>	<u>10,953</u>
Transfers in (out):					
Transfers In	1,797	-	-	1,797	262
Transfers Out	(129)	-	-	(129)	(262)
Total Transfers In (Out)	<u>1,668</u>	<u>-</u>	<u>-</u>	<u>1,668</u>	<u>-</u>
<b>Change in Net Assets</b>	<u>1,081</u>	<u>1,335</u>	<u>(623)</u>	<u>1,793</u>	<u>10,953</u>
Net Assets - Beginning	<u>5,046</u>	<u>(2,216)</u>	<u>629</u>	<u>3,459</u>	<u>18,094</u>
Net Assets - Ending	<u>\$ 6,127</u>	<u>\$ (881)</u>	<u>\$ 6</u>	<u>\$ 5,252</u>	<u>\$ 29,047</u>

The notes to the financial statements are an integral part of this statement.

**COUNTY OF IMPERIAL**  
**Statement of Cash Flows**  
**Proprietary Funds**

For the Fiscal Year Ended June 30, 2006  
(amounts expressed in thousands)

	Business-type Activities-Enterprise Funds				Governmental
	Imperial Airport	Closure/ Postclosure	Other	Total	Internal
			Enterprise Funds		Service Funds
<b>Cash flows from operating activities:</b>					
Cash received from users	\$ 557	\$ 1,153	\$ 110	\$ 1,820	\$ 33,099
Cash received from operating activities	1	-	-	1	217
Cash paid to suppliers	(406)	(1,078)	(2,527)	(4,011)	(21,426)
Cash paid to employees	(109)	-	(78)	(187)	(2,044)
Cash paid for operating activities	-	-	-	-	(32)
Net cash provided by (used) operating activities	43	75	(2,495)	(2,377)	9,814
<b>Cash flows from noncapital financing activities:</b>					
Transfers Out	-	-	-	-	-
Receipt of federal aid	-	-	-	-	-
Receipt of state aid	-	-	2,131	2,131	-
Net cash provided by (used) in non-capital financing activities	-	-	2,131	2,131	-
<b>Cash flows from capital and related financing activities:</b>					
Acquisition of capital assets	(6)	-	-	(6)	(1,012)
Transfer in to purchase equipment	(95)	-	-	(95)	197
Net cash used by capital and related financing activities	(101)	-	-	(101)	(815)
<b>Cash flows from investing activities:</b>					
Interest received (paid)	2	183	10	195	714
Net increase in cash and cash equivalents	(56)	258	(354)	(152)	9,713
<b>Cash and cash equivalents - beginning</b>	26	6,847	553	7,426	23,274
<b>Cash and cash equivalents - ending</b>	\$ (30)	\$ 7,105	\$ 199	\$ 7,274	\$ 32,987
Reconciliation of operating income (loss) to net cash provided by operating activities:					
Operating Income (Loss)	(488)	1,153	(2,764)	(2,099)	9,013
Adj. to reconcile operating income (loss) to net cash provided by (used in) operating activities:					
Depreciation expense	558	-	-	558	842
Decrease (Increase) in accounts receivable	-	-	152	152	(27)
Decrease (Increase) in interest receivable	-	(13)	2	(11)	(91)
Decrease (Increase) in prepaid expenses	-	-	-	-	18
Decrease (Increase) in due from other funds	20	-	53	73	106
Increase (Decrease) in accounts payable	7	-	64	71	76
Increase (Decrease) in interest payable	-	-	-	-	-
Increase (Decrease) in accrued liabilities	(4)	-	(2)	(6)	971
Increase (Decrease) in due to other funds	(50)	-	-	(50)	(67)
Increase (Decrease) in postclosure costs liability	-	(1,065)	-	(1,065)	-
Increase (Decrease) in insurance loss expense	-	-	-	-	(1,027)
Increase (Decrease) in compensated absences	-	-	-	-	-
Total adjustments	531	(1,078)	269	(278)	801
Net cash provided by operating activities	\$ 43	\$ 75	\$ (2,495)	\$ (2,377)	\$ 9,814

The notes to the financial statements are an integral part of this statement.

**COUNTY OF IMPERIAL**  
**Statement of Fiduciary Net Assets**  
June 30, 2006  
(amounts expressed in thousands)

	<b>Trust Funds</b>			<b>Agency Funds</b>	<b>Total</b>
	<b>Pension Trust and other Employee Benefits</b>	<b>Special District and School District</b>	<b>Investment Trust</b>		
<b>Assets:</b>					
Cash and cash equivalents	\$ 2,213	\$ 166,119	\$ 38,345	\$ 75,417	\$ 282,094
Cash with Fiscal Agent	-	-	-	-	-
Accounts Receivable-Net	-	-	78	-	78
Taxes Receivable-Net	-	-	-	(56,210)	(56,210)
Interest Receivable	25	33	232	563	853
Prepaid Expenses	-	-	-	-	-
Due From Other Funds	-	97	202	2,906	3,205
Deposits with Others	-	36	884	26,198	27,118
<b>Total Assets</b>	<b>\$ 2,238</b>	<b>\$ 166,285</b>	<b>\$ 39,741</b>	<b>\$ 48,874</b>	<b>\$ 257,138</b>
<b>Liabilities :</b>					
Accounts Payable	\$ -	\$ 34	\$ (819)	\$ (1,096)	\$ (1,881)
Interest Payable	-	-	2,565	1,115	3,680
Due to Other Funds	-	59	417	6,283	6,759
Fiduciary Liability	-	21	-	(18,156)	(18,135)
<b>Total Liabilities</b>	<b>-</b>	<b>114</b>	<b>2,163</b>	<b>(11,854)</b>	<b>(9,577)</b>
Held in Trust for Pension Benefits	-	-	-	-	-
Held in Trust for Pool Investments	2,238	166,171	37,578	60,728	266,715
<b>Total Liabilities and Fund Balance</b>	<b>\$ 2,238</b>	<b>\$ 166,285</b>	<b>\$ 39,741</b>	<b>\$ 48,874</b>	<b>\$ 257,138</b>

The notes to the financial statements are an integral part of this statement.

**COUNTY OF IMPERIAL**  
**Statement of Changes in Fiduciary Net Assets**  
**Fiduciary Funds**  
**For the Fiscal Year Ended June 30, 2006**  
(amounts expressed in thousands)

	<b>Trust Funds</b>			<b>Total</b>
	<b>Pension Trust and other Employee Benefits</b>	<b>Special District and School District</b>	<b>Investment Trust</b>	
<b>Additions:</b>				
Employee/Employer Contributions	\$ 15,486	\$ -	\$ -	\$ 15,486
Contributions to Pooled Investments	-	-	112,144	112,144
Contributions to Special/School District Trust	-	482,057	-	482,057
Interest and Investment Income	73	170	164	407
Total Additions	<u>15,559</u>	<u>482,227</u>	<u>112,308</u>	<u>610,094</u>
<b>Deductions:</b>				
Distributions from Pooled Investments	-	-	99,792	99,792
Distributions from Pension Trust/Other	17,681	-	-	17,681
Distributions from Special/School District Trust	-	456,664	-	456,664
Total Deductions	<u>17,681</u>	<u>456,664</u>	<u>99,792</u>	<u>574,137</u>
Change in Net Assets	<u>(2,122)</u>	<u>25,563</u>	<u>12,516</u>	<u>35,957</u>
Net Assets - Beginning	<u>4,360</u>	<u>140,608</u>	<u>25,062</u>	<u>170,030</u>
Net Assets - Ending	<u>\$ 2,238</u>	<u>\$ 166,171</u>	<u>\$ 37,578</u>	<u>\$ 205,987</u>

The notes to the financial statements are an integral part of this statement.





**County of Imperial**  
**Notes to the Basic Financial Statements**  
**For the Fiscal Year Ended June 30, 2006**  
**(Dollars in Thousands)**

**Note 1 – The Financial Reporting Entity**

**(a) Reporting Entity**

The County of Imperial, California (County), is a legal subdivision of the State of California charged with governmental powers. The County's powers are exercised through a Board of Supervisors (Board), which is the governing body of the County. The Board is responsible for the legislative and executive control of the County. The County provides various services on a countywide basis including law and justice, education, detention, social, health, fire protection, road construction, road maintenance, transportation, park and recreation facilities, elections and records, communications, planning, zoning, and tax collection.

The governmental reporting entity consists of the County (Primary Government) and its component units. Component units are legally separate organizations for which the Board is financially accountable or other organizations whose nature and significant relationship with the County are such that exclusion would cause the County's financial statements to be misleading or incomplete. Financial accountability is defined as the appointment of a voting majority of the component unit's board, and (i) either the County's ability to impose its will on the organization or (ii) there is potential for the organization to provide a financial benefit to or impose a financial burden on the County.

The basic financial statements include both blended and discretely presented component units. The blended component units are, although legally separate entities, in substance part of the County's operations and, therefore, data from these units are combined with data of the primary government. The discretely presented component unit, on the other hand, is reported in a separate column in the government-wide financial statements to emphasize it is legally separate from the government.

For financial reporting purposes, the County's basic financial statements include all financial activities that are controlled by or are dependent upon actions taken by the County's Board. The financial statements of the individual component units may be obtained by writing to the County of Imperial, Controller's Office, 940 Main Street, El Centro, California 92243.

**(b) Blended Component Units:**

Blended component units are, in substance, part of the County's operations and their financial data are combined with data of the primary government. The following organizations are included in the County's financial statements as blended component units:

Imperial County Employees' Retirement System (ICERS) is reported as a Pension Trust Fund in the financial statements because it is an integral part of the County. A separate financial report can be reviewed at the Imperial County Treasurers/Retirement Office.

Special Districts and Schools are reported as trust funds because they are an integral part of the County. A separate financial report can be reviewed at the Auditor-Controller's Office.

**County of Imperial**  
**Notes to the Basic Financial Statements**  
**For the Fiscal Year Ended June 30, 2006**  
**(Dollars in Thousands)**

**(c) Discretely Presented Component Unit:**

The Children and Families First Commission (Commission) was established in March 1999 under the authority of the California Children and Families First Act of 1998 and sections 130100, et seq. of the Health and Safety Code. The County Board appointed all members of the Commission. The Board can remove appointed members at will. The Commission accounts for receipts and disbursements of California Children and First Families Trust Fund allocations and appropriations to the Commission. The Commission is a discretely presented component unit as the Commission's governing body is not substantially the same as that of the County and the Commission does not provide services entirely or almost entirely to the County.

**Note 2 – Summary of Significant Accounting Policies**

**(a) Implementation of Governmental Accounting Standards Board Statements**

GASB Statement Nos. 34 and 37

In June 1999 and in June 2001, the GASB issued Statement No. 34, Basic Financial Statements – and Management's Discussion and Analysis – for State and Local Governments, and Statement No. 37, Basic Financial Statements – and Management's Discussion and Analysis – State and Local Governments – Omnibus, respectively. These statements provide for the most significant change in financial reporting in over twenty years.

GASB Statement No. 38

In June 2001, the GASB issued Statement No. 38, Certain Financial Statement Note Disclosures. This statement modifies, adds and deletes various note disclosure requirements. Those requirements address revenue recognition policies, actions taken in response legal violations, debt service requirements, variable-rate debt, receivable and payable balances, inter-fund transfers and balances, and short-term debt.

**(b) Basis of Presentation**

Government-wide Financial Statements

The statement of net assets and statement of activities display information about the primary government (the County) and its component units. These statements include the financial activities of the overall government, except for fiduciary activities. Eliminations have been made to minimize the double counting of internal activities. These statements distinguish between the governmental and business-type activities of the County and between the County and its discretely presented component unit. Governmental activities, which normally are supported by taxes and inter-governmental revenues, are reported separately from business-type activities, which rely, to a significant extent on fees charged to external parties.

**County of Imperial**  
**Notes to the Basic Financial Statements**  
**For the Fiscal Year Ended June 30, 2006**  
**(Dollars in Thousands)**

The statement of activities presents a comparison between direct expenses and program revenues for each segment of the business-type activities of the County and for each function of the County's governmental activities. Direct expenses are those that are specifically associated with a program or function and; therefore, are clearly identifiable to a particular function. Program revenues include 1) charges paid by the recipients of goods or services offered by the programs and 2) grants and contributions that are restricted to meeting the operational or capital requirements of a particular program. Revenues that are not classified as program revenues, including all taxes, are presented instead as general revenues.

When both restricted and unrestricted net assets are available, restricted resources are used only after the unrestricted resources are depleted.

#### Fund Financial Statements

The fund financial statements provide information about the County's funds, including fiduciary funds and blended component units. Separate statements for each fund category – *governmental, proprietary and fiduciary* – are presented. The emphasis of fund financial statements is on major governmental and enterprise funds; each displayed in a separate column. All remaining governmental and enterprise funds are separately aggregated and reported as nonmajor funds.

Proprietary funds distinguish *operating* revenues, such as charges for services, results from exchange transactions associated with the principal activity of the fund. Exchange transactions are those in which each party receives and gives up essentially equal values. *Nonoperating* revenues, such as subsidies and investment earnings, result from nonexchange transactions or ancillary activities.

The County reports only one major governmental fund:

- The *General Fund* is used to account for all revenues and expenditures necessary to carry out basic governmental activities of the County that are not accounted for through other funds. For the County, the General Fund includes activities as public protection, public ways and facilities, health and sanitation, public assistance, and education.
- Although the *Special Revenue Funds* are not considered major funds, the County has chosen to present them in a separate column for the benefit of the reader.

The County reports the following major enterprise funds:

- The *Imperial Airport* accounts for operations, which include the airport's physical structure, property and leases and to provide the public with adequate, convenient and safe services associated with aviation. This includes providing for all forms of commercial and private transportation (air and repair, flying instruction, aircraft rental, sales, charter, fuel sales, and aircraft storage). The department also provides safety and emergency services, aviation agri-business, Federal Aviation Administration facilities (Flight Service Station), and public interest conveniences such as restaurants, motel and ground transportation.
- The *Solid Waste Closure/Postclosure* accounts for funds pursuant to State Law requiring funds to cover the estimated cost of solid waste closure and post-closure activities. Each County operated site must have a plan to specifically address the physical requirements, as closure becomes necessary and the post-closure ongoing monitoring requirements.

**County of Imperial**  
**Notes to the Basic Financial Statements**  
**For the Fiscal Year Ended June 30, 2006**  
**(Dollars in Thousands)**

The County reports the following additional fund types:

*Internal Service Funds* account for the activities of the fleet maintenance, flood control, centralized printing, centralized mailing, and centralized telecommunications. In addition, the County's Risk Management accounts for self-insurance programs – workers' compensation, liability, unemployment, employee health/dental/vision benefits, medical malpractice and auto on a cost-reimbursement basis.

The *Pension Trust Fund* accumulates contributions from the County, its employees and other participating employers. Disbursements are made from the fund for retirement, disability and death benefits (based on a defined benefit formula) and administrative expenses.

The *Investment Trust Funds* account for the assets of legally separate entities that deposit cash with the County Treasurer. These entities include school and community college districts, other special districts governed by local boards, regional boards and authorities, and pass through funds for tax collections for cities. These funds represent the assets, primarily cash and investments, and the related liability of the County to disburse these monies on demand.

The *Agency Funds* account for assets held by the County as an agent for various local governments and for individuals.

**c) Basis of Accounting**

The government-wide proprietary and fiduciary fund financial statements are reported using the economic resources measurement focus and the accrual basis of accounting. Revenues are recorded when earned and expenses are recorded at the time the liabilities are incurred, regardless of when the related cash flows take place. Nonexchange transactions, in which the County gives (or receives) value without directly receiving (or giving) equal value in exchange, include property and sales taxes, grants, entitlements and donations. On an accrual basis, revenue from property taxes is recognized in the fiscal year for which the taxes are levied. Revenues from sales tax are recognized when the underlying transactions take place. Revenues from grants, entitlements and donations are recognized in the fiscal year in which all eligible requirements have been satisfied.

Governmental funds are reported using the current financial resources measurement focus and the modified accrual basis of accounting. Under this method, revenues are recognized when measurable and available. Property and sales taxes, interest, certain state and federal grants, and charges for services are accrued when their receipt occurs within sixty days after the end of the accounting period so as to be both measurable and available. Expenditures are generally recorded when a liability is incurred, as under accrual accounting. However, debt service expenditures as well as expenditures related to claims and judgments are recorded only when payment is due. General capital assets acquisitions are reported as expenditures in governmental funds. Proceeds of general long-term debt and capital leases are reported as other financing sources.

**County of Imperial**  
**Notes to the Basic Financial Statements**  
**For the Fiscal Year Ended June 30, 2006**  
**(Dollars in Thousands)**

For its business-type activities and enterprise funds, the County has elected under GASB Statement No. 20, *Accounting and Financial Reporting for Proprietary Funds and Other Governmental Entities That Use Proprietary Fund Accounting*, to apply all applicable GASB pronouncements as well as any applicable pronouncements of the Financial Accounting Standards Board, the Accounting Principles Board or any Accounting Research Bulletins issued on or before November 30, 1989 unless those pronouncements conflict with or contradict GASB pronouncements. The GASB periodically updates its codification of existing Governmental Accounting and Financial Reporting Standards, which, along with subsequent GASB pronouncements (Statements and Interpretations), constitutes (GAAP) for governments units.

**(d) Cash and Cash Equivalents**

Cash is considered to be cash on hand, cash in bank and imprest cash. All short-term investments that are highly liquid are considered to be cash equivalents. Cash equivalents are readily convertible to known amounts of cash, and at the day of purchase, they have an original maturity of three months or less.

**(e) Investments**

Statutes authorize the County to invest its surplus cash (excluding ICERS) in obligations of the U.S. Treasury, agencies and instrumentalities, corporate bonds, rated P-1 by Standard & Poor's Corporation or A-1 by Moody's Investor Services, bankers acceptances, certificates of deposit, commercial paper, repurchase agreements, and the State of California Local Agency Investment Fund. Gains and losses are recognized based upon the specific identification method. All pooled investments are reported at book value. ICERA investments are made subject to guidelines of the investment plan approved by the Retirement Board.

**(f) Inventories**

Inventories are valued at cost, which is determined on a first-in, first-out basis. Inventory in the General and Special Revenues Funds consists of expendable supplies held for consumption. The cost is recorded as an expenditure at the time individual inventory items are purchased.

**(g) Property Taxes**

The County levies property taxes as of September 1, on property values certified on July 1. Secured property tax payments are due in two equal installments. The first is generally due November 1 and delinquent with penalties after December 10, and the second is generally due on February 1 and delinquent with penalties after April 10. Secured property taxes become a lien on the property on January 1. Property taxes on the unsecured roll are due upon receipt of the tax bill and become delinquent if unpaid on August 31.

All jurisdictions within California derive their taxing authority from the State of California and various legislative provisions contained in the State of Government Codes and Revenue Taxation Codes. Pursuant to Article XIII A (known as Proposition 13) of the State of California Constitution, the County is permitted to levy a maximum tax of 1% of full cash value. For fiscal year 2005-06, the County received \$13,894 in property taxes that were used to finance general government services.

**County of Imperial**  
**Notes to the Basic Financial Statements**  
**For the Fiscal Year Ended June 30, 2006**  
**(Dollars in Thousands)**

**(h) Capital Assets**

Capital assets, including infrastructure, are recorded at historical cost or at estimated historical cost if actual historical cost is not available. Contributed fixed assets are valued at their estimated fair market value on the date contributed. Capital assets include public domain (infrastructure) general fixed assets, which consist of certain improvements including roads, bridges, pavements in progress, and right of way. The County defines capital assets as assets with initial, individual costs of more than \$3 and an estimated useful life in excess of one year. Capital assets used in operations are depreciated or amortized (assets under capital leases) using the straight-line method over the lesser of the capital lease period or their estimated useful lives in the government-wide statements and proprietary funds.

Maintenance and repairs are charged to operations when incurred. Betterments and major improvements which significantly increase values, change capacities or extend useful lives are capitalized. Upon sale or retirement of fixed assets, the cost and related accumulated depreciation are removed from the respective accounts and any resulting gain or loss is included in the results of operations.

The estimated useful lives are as follows:

Buildings	40 years
Equipment	5 – 15 years
Office Furniture	5 years
Vehicles	70,000 – 100,000 miles
Infrastructure	20 – 50 years

**(i) Compensated Absences (Accrued Vacation, Sick Leave and Compensatory Time)**

Unused vacation leave may be accumulated up to a specified maximum and is paid at the time of termination from County employment. The County is not obligated to pay for unused sick leave if an employee terminates prior to retirement. However, if the employee, with less than 10 years of service, elects to leave their funds on deposit with the retirement system (deferred retirement), the accumulated sick leave hours will be applied toward their retirement service credit. Upon retirement, employees have the option of 1) being compensated for 15% of the employee's sick leave hours, or 2) applying all employee's accumulated sick leave hours as retirement service credit.

The County accrues for compensated absences in the government-wide and proprietary fund financial statement for which they are liable to make a payment directly.

**(j) Use of Estimates**

The preparation of basic financial statements in conformity with accounting principles generally accepted in the United States of America requires management to make estimates and assumptions that affect certain reported amounts and disclosures. Accordingly, actual results could differ from those estimates.

**County of Imperial**  
**Notes to the Basic Financial Statements**  
**For the Fiscal Year Ended June 30, 2006**  
**(Dollars in Thousands)**

**Note 3 – Cash and Investments**

The County maintains a Cash and Investment Pool (Pool) that is available for use by all funds. The Pension Trust participates in the Pool, but the majority of their cash and investments are held separately from other County funds. Interest earned on the investment pool is distributed to the participating funds using a formula based on the average daily balance of each fund.

Total County cash and investments are as follows:

<i>Cash:</i>	
Cash on hand	\$ 2
Imprest Cash	56
Checks for deposit	744
Outstanding warrants adj	<u>2,604</u>
Total cash	<u>3,406</u>
 <i>Investments:</i>	
In Treasurer's pool	352,104
With Fiscal Agent	27,090
With others external to the Treasurer's Pool	<u>27,234</u>
Total investments	<u>406,428</u>
Total cash and investments	<u>\$ 409,834</u>

Total County cash and investments are reported as follows:

Primary government	\$ 95,224
Component unit	5,397
Pension trust	2,213
Special district and Schools trust	166,156
Investment trust funds	39,229
Agency funds	<u>101,615</u>
Total cash and investments	<u>\$ 409,834</u>

**Deposits**

At June 30, 2006, the carrying amount of the County's cash deposits was \$36,885 and the bank balance for deposits maintained in various financial institutions amounted to \$16,189. Of the bank balance, \$10,538 was covered by federal depository insurance and the balance was collateralized as required by state law.

Under the California Government Code, a financial institution is required to secure deposits in excess of \$100 made by state or local governmental units by pledging securities held in the form of an undivided collateral pool. The market value of the pledged securities in the collateral pool must equal at least 110% of the total amount deposited by the public agencies.

**County of Imperial**  
**Notes to the Basic Financial Statements**  
**For the Fiscal Year Ended June 30, 2006**  
**(Dollars in Thousands)**

**Investments**

The County's investments are categorized below to give an indication of the level of custodial credit risk assumed by the County as of June 30, 2006. Category 1 includes investments that are insured or registered, or held by the County or its agent in the County's name. Category 2 includes uninsured and unregistered investments for which the securities are held by the counterparty's trust department or agent in the County's name. Category 3 includes uninsured and unregistered investments for which the securities are held by the counterparty, or its trust department or agent but not in the County's name. The County does not have any category 2 or 3 investments at June 30, 2006.

At June 30, 2006, the County's investment balances were as follows:

	Category			Carrying Amount	Fair Value
	1	2	3		
Categorized investments:					
U.S. Government Securities	\$ 235,406	\$ -	\$ -	\$ 235,406	\$ 230,477
Mortgages	<u>17,541</u>	-	-	<u>17,541</u>	<u>16,671</u>
Total categorized investments	<u>\$ 252,947</u>	<u>\$ -</u>	<u>\$ -</u>	<u>\$ 252,947</u>	<u>\$ 247,148</u>
Uncategorized investments:					
Local Agency Investment Fund				29,500	29,500
Mutual Funds				<u>40,000</u>	<u>40,000</u>
Total investments				<u>\$ 322,447</u>	<u>\$ 316,648</u>

**Note 4 – Receivables**

Accounts, interest, taxes and loan receivable balances of the General, Special Revenue, Proprietary and Trust and Agency Funds are stated net of allowances for uncollectibles. The following is a schedule of receivables applicable to each individual fund at June 30, 2006:

<u>Receivables- Governmental Activities</u>	<u>General Fund</u>	<u>Nonmajor Funds</u>	<u>Internal Service Fund</u>	<u>Total Governmental Activities</u>
Accounts	\$ 8,083	\$ 1,201	\$ 27	\$ 9,311
Interest	363	171	210	744
Taxes	1,887	516	-	2,403
Loan	<u>-</u>	<u>6,730</u>	<u>-</u>	<u>6,730</u>
Total receivables	<u>\$ 10,333</u>	<u>\$ 8,618</u>	<u>\$ 237</u>	<u>\$ 19,188</u>



**County of Imperial**  
**Notes to the Basic Financial Statements**  
**For the Fiscal Year Ended June 30, 2006**  
**(Dollars in Thousands)**

<u>Receivables- Business-Type Activities</u>	<u>Closure/ Postclosure</u>	<u>Other Enterprise Fund</u>	<u>Total Business-type Activities</u>
Interest	\$ 47	\$ 2	\$ 49
Total receivables	<u>\$ 47</u>	<u>\$ 2</u>	<u>\$ 49</u>

**Note 5 – Inter-fund Transactions**

The composition of inter-fund balances as of June 30, 2006 are as follows:

Short-term inter-fund transactions between funds which are not reimbursed by the receiving fund are reported as “due to and due from other funds.”

	<u>Due from Other Funds</u>	<u>Due to Other Funds</u>
General	\$ 7,314	\$ 3,154
Nonmajor Governmental Funds	772	1,965
Imperial Airport	-	22
Internal Service Funds	610	1
Special District/School Trust Funds	97	59
Investment Trust Funds	202	417
Agency Funds	<u>2,906</u>	<u>6,283</u>
Total	<u>\$ 11,901</u>	<u>\$ 11,901</u>

During the course of normal operations, numerous transactions occur between individual funds that may result in amounts owed between funds. Those related to goods and services type transactions are classified as “due to and from other funds.” Transfers are indicative of funding for capital projects, lease payments or debt service, subsidies of various County operations, re-allocations of special revenues, and debt service transfers to pay principal and interest payments on pension obligation bonds. All inter-fund transfers between individual government funds have been eliminated on the government-wide statements.

The following schedule briefly summarizes the County’s transfer activity for the fiscal year ended June 30, 2006:

	<u>Transfers In</u>	<u>Transfers Out</u>
Capital Projects	\$ -	\$ 1,668
Internal Service Funds	262	262
Enterprise Funds	<u>1,668</u>	<u>-</u>
Total	<u>\$ 1,930</u>	<u>\$ 1,930</u>

**County of Imperial**  
**Notes to the Basic Financial Statements**  
**For the Fiscal Year Ended June 30, 2006**  
**(Dollars in Thousands)**

**Note 6 – Capital Assets**

Capital assets activity for the year ended June 30, 2006 was as follows:

	Balance July 1, 2005	Additions	Deletions	Balance June 30, 2006
<b>Governmental activities:</b>				
Capital assets, not being depreciated:				
Land	\$ 4,083	\$ -	\$ -	\$ 4,083
Construction in progress	<u>1,723</u>	<u>8,085</u>	<u>(3,912)</u>	<u>5,896</u>
Total capital assets, not being depreciated	<u>5,806</u>	<u>8,085</u>	<u>(3,912)</u>	<u>9,979</u>
Capital assets, being depreciated:				
Infrastructure	71,641	1,538	-	73,179
Structures & Improvements	52,542	705	-	53,247
Vehicles	8,884	1,100	(1,030)	8,954
Furniture and equipment	<u>29,453</u>	<u>2,244</u>	<u>(489)</u>	<u>31,208</u>
Total capital assets, being depreciated	<u>162,520</u>	<u>5,587</u>	<u>(1,519)</u>	<u>166,588</u>
Less accumulated depreciation for:				
Infrastructure	35,952	2,924	-	38,876
Structures & Improvements	27,131	1,324	-	28,455
Vehicles	5,770	933	(1,014)	5,689
Furniture and equipment	<u>20,576</u>	<u>2,182</u>	<u>(446)</u>	<u>22,312</u>
Total accumulated depreciation	<u>89,429</u>	<u>7,363</u>	<u>(1,460)</u>	<u>95,332</u>
Total capital assets, being depreciated, net	<u>73,091</u>	<u>(1,776)</u>	<u>(59)</u>	<u>71,256</u>
Governmental activities capital assets, net	<u>\$ 78,897</u>	<u>\$ 6,309</u>	<u>\$ (3,971)</u>	<u>\$ 81,235</u>
<b>Business-type activities:</b>				
Capital assets, not being depreciated				
Land	<u>\$ 685</u>	<u>\$ -</u>	<u>\$ -</u>	<u>\$ 685</u>
Total capital assets, not being depreciated	<u>685</u>	<u>-</u>	<u>-</u>	<u>685</u>
Capital assets, being depreciated:				
Structures & Improvements	10,789	1,667	-	12,456
Furniture and equipment	<u>74</u>	<u>1</u>	<u>-</u>	<u>75</u>
Total capital assets, being depreciated	<u>10,863</u>	<u>1,668</u>	<u>-</u>	<u>12,531</u>
Less accumulated depreciation for:				
Structures & Improvements	6,390	553	-	6,943
Furniture and equipment	<u>53</u>	<u>5</u>	<u>-</u>	<u>58</u>
Total accumulated depreciation	<u>6,443</u>	<u>558</u>	<u>-</u>	<u>7,001</u>
Total capital assets, being depreciated, net	<u>4,420</u>	<u>1,110</u>	<u>-</u>	<u>5,530</u>
Business-type activities capital assets, net	<u>\$ 5,105</u>	<u>\$ 1,110</u>	<u>\$ -</u>	<u>\$ 6,215</u>

**Depreciation**

Depreciation expense was charged to governmental functions as follows:

General Government	\$ 4,034
Public Protection	1,385
Health & Sanitation	223
Public Assistance	284
Public Ways & Facilities	630
Depreciation on capital assets held by the County's internal service funds are charged to the various functions based on their usage of the assets	<u>807</u>
Total depreciation expense – governmental functions	<u>\$ 7,363</u>

Depreciation expense was charged to business-type functions as follows:

Airports	<u>\$ 558</u>
Total depreciation expense – business-type functions	<u>\$ 558</u>

**County of Imperial**  
**Notes to the Basic Financial Statements**  
**For the Fiscal Year Ended June 30, 2006**  
**(Dollars in Thousands)**

**Construction in Progress**

Construction in Progress for governmental activities represents work being performed on the County Services Center - Brawley, roads and bridge infrastructure, and a number of ongoing small projects.

Included in Construction in Progress are building costs in the amount of \$1,585. The building was destroyed by fire before completion and the County is currently working on an insurance settlement. The outcome of this settlement has not yet been determined.

**Note 7 – Leases**

**Operating Leases**

The County is committed under various noncancelable operating leases, primarily for office buildings and equipment.

Future minimum operating lease commitments are as follows:

<u>Year ending June 30,</u>	
2007	\$ 394
2008	380
2009	349
2010	408
2011	<u>6</u>
Total	<u>\$ 1,537</u>

**Capital Leases**

The County has entered into certain capital lease agreements under which the related equipment will become the property of the County when all terms of the lease agreements are met. Equipment under capital leases includes the following.

	<u>Governmental Activities</u>
Fire and Security System	\$ 191
Energy Retrofit Project	2,098
Motorola 800 MHZ Radio	961
New Holland Wheel Loader	199
Asphalt Paver & Windrow Elev.	349
Qty 3 Emer One Trad Pumper	411
Qty 2 DM 1000 Digital Mail Proc.	51
D7 Dozer	<u>264</u>
	\$ 4,524
Less: Accumulated Depreciation	<u>(1,615)</u>
Net	<u>\$ 2,909</u>

**County of Imperial**  
**Notes to the Basic Financial Statements**  
**For the Fiscal Year Ended June 30, 2006**  
**(Dollars in Thousands)**

Future capital lease minimum payments are as follows:

<u>Year ending June 30,</u>	
2007	\$ 597
2008	236
2009	169
2010	303
2011	<u>1</u>
Total	<u>\$ 1,306</u>

**Note 8 – Long Term Debt**

The County has recognized a long term debt for compensated absences, capital lease obligations, pension obligation bonds, certificates of participation, and pending litigation payable to the State of California. Outstanding long term debt as of June 30, 2006 is recorded within governmental activities and payable from governmental funds.

The following is a schedule of long-term liabilities for Governmental Activities for the year ended June 30, 2006:

	<u>Balance</u> <u>July 1, 2005</u>	<u>Additions</u>	<u>Deductions</u>	<u>Balance</u> <u>June 30, 2006</u>	<u>Amounts</u> <u>Due within</u> <u>One year</u>
Employee Compensated Absences	\$ 7,818	\$ 8	\$ 8	\$ 7,818	\$ 1
Capital Lease Obligation	1,642	335	533	1,444	660
Pension Funding Bonds 1997	31,080	-	1,130	29,950	1,205
Pension Funding Bonds 2002	33,265	-	-	33,265	-
State of California Child Support	2,932	-	1,582	1,350	90
1999 Cert. Of Participation	7,345	-	845	6,500	880
General Long Term Debt Payable	<u>\$ 84,082</u>	<u>\$ 343</u>	<u>\$ 4,098</u>	<u>\$ 80,327</u>	<u>\$ 2,836</u>

**1999 Certificates of Participation**

On March 1, 1999, the County issued its \$11,860 Certificates of Participation (1999 Capital Projects) dated March 3, 1999.

A portion of the proceeds of the certificates together with other available funds, have been applied to refund all of the outstanding \$14,200 original principal amount of the 1997 Certificates of Participation having any adjustable rate which was approximately 3.70% at the time of refunding. The 1999 Certificates have a stated interest rate of 3.50% to 5.00%, are payable over 20 years and are subject to a prepayment option which was not applicable for the refunding. The balance of the proceeds were placed in certain accounts with the fiscal agent to be drawn on as the various related capital projects progress. The debt service requirements on the certificates to maturity, are as follows:

<u>Year Ending June 30,</u>	<u>Principal</u>	<u>Interest</u>	<u>Total Payment</u>
2007	\$ 880	\$ 301	\$ 1,181
2008	920	266	1,186
2009	950	228	1,178
2010	1,005	180	1,185
2011	250	137	387
2012-2015	1,125	418	1,543
2016-2019	<u>1,370</u>	<u>175</u>	<u>1,545</u>
Total	<u>\$ 6,500</u>	<u>\$ 1,705</u>	<u>\$ 8,205</u>

**County of Imperial**  
**Notes to the Basic Financial Statements**  
**For the Fiscal Year Ended June 30, 2006**  
**(Dollars in Thousands)**

**Taxable Pension Funding Bonds 1997**

On November 19, 1997, the County issued \$35,175 of taxable pension funding bonds to fund the County's unfunded accrued actuarial liability due the Imperial County Employees' Retirement System ("the System"). The payment of this liability will provide the System additional funds for investment.

The bonds have a stated interest rate from 6.100% to 6.375% and are payable over a period of 24 years maturing in 2021. The bonds are not subject to optional redemption prior to their stated maturity date. The bond's debt service to maturity is as follows:

<u>Year Ending June 30,</u>	<u>Principle</u>	<u>Interest</u>	<u>Total Payment</u>
2007	\$ 1,205	\$ 1,970	\$ 3,175
2008	1,285	1,890	3,175
2009	1,370	1,805	3,175
2010	1,465	1,711	3,176
2011	1,565	1,611	3,176
2012-2015	7,415	5,286	12,701
2016-2019	9,705	2,996	12,701
2020-2021	5,940	412	6,352
Total	<u>\$ 29,950</u>	<u>\$ 17,681</u>	<u>\$ 47,631</u>

**Taxable Pension Funding Bonds 2002**

On September 17, 2002, the County issued \$33,265 of taxable pension funding bonds to fund the County's unfunded accrued actuarial liability due the Imperial County Employees' Retirement System ("the System"). The payment of this liability will provide the System additional funds for investment.

The bonds have a stated interest rate from 4.71% to 5.715% and are payable over a period of 29 years maturing in 2031. The bonds are not subject to optional redemption prior to their stated maturity date. The bond's debt service to maturity is as follows:

<u>Year Ending June 30,</u>	<u>Principle</u>	<u>Interest</u>	<u>Total Payment</u>
2007	\$ -	\$ 1,863	\$ 1,863
2008	-	1,863	1,863
2009	-	1,863	1,863
2010	-	1,863	1,863
2011	-	1,863	1,863
2012-2015	3,855	7,097	10,952
2016-2019	5,085	6,103	11,188
2020-2023	6,355	4,836	11,191
2024-2027	7,965	3,227	11,192
2029-2031	10,005	1,183	11,188
Total	<u>\$ 33,265</u>	<u>\$ 31,761</u>	<u>\$ 65,026</u>

The following is a schedule of long-term liabilities for Business-Type Activities for the year ended June 30, 2006:

	<u>Balance</u> <u>July 1, 2005</u>	<u>Additions</u>	<u>Deductions</u>	<u>Balance</u> <u>June 30, 2006</u>	<u>Amounts</u> <u>Due within</u> <u>One year</u>
Employee Compensated Absences	\$ 4	\$ -	\$ 1	\$ 3	\$ 1
Total	<u>\$ 4</u>	<u>\$ -</u>	<u>\$ 1</u>	<u>\$ 3</u>	<u>\$ 1</u>

**County of Imperial**  
**Notes to the Basic Financial Statements**  
**For the Fiscal Year Ended June 30, 2006**  
**(Dollars in Thousands)**

**Note 9 – Landfill Closure and Postclosure Costs**

State and federal laws and regulations require that the County of Imperial place a final cover on its landfills when they are closed and perform certain maintenance and monitoring functions at the landfill site for thirty years after closure. In addition to operating expenses related to current activities of the landfill, an expense provision and related liability are being recognized based on the future closure and postclosure care costs that will be incurred near or after the date the landfills no longer accept waste. The recognition of these landfills closure and postclosure care costs are based on the amount of the landfills used during the year. The estimated liability for landfill closure and postclosure care costs has a balance of \$8,033 as of June 30, 2006 which is based on an average of 10.45% usage (filled) of the ten landfills operated by the County. It is estimated that an additional \$2,486 will be recognized as closure and postclosure care expenses between the date of the balance sheet and the date that last landfill is expected to be filled to capacity (2109). The estimated total current cost of the landfill closure and postclosure care (\$9,303) is based on the amount that would be paid if all equipment, facilities, and services required to close, monitor, and maintain the landfill were acquired as of June 30, 2006. However, the actual cost of closure and postclosure care may be higher due to inflation, changes in technology, or changes in landfill laws and regulations.

The County of Imperial is required by state and federal laws to make annual contributions to finance closure and postclosure care. The County is in compliance with these requirements and at June 30, 2006, \$7,104 was held in an Enterprise Fund for these purposes. Any future inflation costs and additional costs that might arise from changes in postclosure requirements (due to changes in technology or more rigorous environmental regulations, for example) may need to be covered by charges to future landfill users, taxpayers, or both.

**Note 10 – Employees' Retirement System**

The County has a contributory defined benefit pension plan (the "Plan"), operating under the California County Employees Retirement Act of 1937, administered by the Imperial County Employees' Retirement System (the "Retirement System"). Membership in the Retirement System is mandatory for substantially all employees.

Plan Description - The Retirement System provides for retirement, death, disability, and cost-of-living benefits.

Retirement Allowance – An Employee with 10 or more years of service is entitled to an annual retirement allowance beginning at age 50. The retirement allowance is based upon the member's age at retirement, final compensation, and the total years of service under the Plan. An employee may elect to receive an allowance in the form of a joint survivor annuity.

Employees terminating before rendering five years of service forfeit the right to receive benefits but may withdraw their contributions and accumulated interest. Employees terminating after five years of service may elect to leave accumulated deposits in the Plan and receive benefits at the time of normal retirement.

**County of Imperial**  
**Notes to the Basic Financial Statements**  
**For the Fiscal Year Ended June 30, 2006**  
**(Dollars in Thousands)**

Death and Disability Benefits – Upon the death of an active employee, a death benefit, equal to the deceased member’s accumulated contributions and interest, plus 1/12th of the deceased’s final year’s salary, multiplied by the number of completed years of service, but limited to 1/2 annual salary, is paid to beneficiaries. Upon the death of a qualified member, the surviving spouse, as an option, may receive an annual allowance of 60 percent of the member’s retirement allowance as of the date of death. The death of a member due to service-connected injury or disease entitles the decedent’s surviving spouse or child under 18 years of age to receive an annual allowance equal to one-half the member’s final compensation. In addition, the beneficiary of a retiree who dies after retirement while receiving an allowance from the Retirement System, is paid a death benefit of \$5.

An active employee becoming totally disabled as a result of a service-connected injury or disease is paid an annual allowance of the larger of 50 percent of the employee’s compensation, or the normal retirement benefits accumulated by the member as of the date of disability. An active employee who is totally disabled because of a non-service connected disease or injury, receives all vested retirement benefits accumulated as of the date of the disability.

The Retirement System issues a stand-alone financial report, which may be obtained by contacting the Board of Retirement at 940 Main Street, Suite 105, El Centro, CA 92243.

Funding Policy - As a condition of participation, employees are required to contribute a percentage of their annual compensation to the Retirement System.

The total covered payroll of employees participating in the Retirement System for the year ended June 30, 2006 was \$63,700. The total County payroll for the year was \$67,042. The total contribution to the Retirement System for 2006 of \$9,836 was made in accordance with actuarial determined requirements computed through an actuarial valuation performed as of June 30, 2005. The County’s contribution was \$5,487. Employee contributions were \$4,349. The amortization period of the unfunded actuarial liability is based on an initial amortization period of 30 years.

The County’s contributions to the Plan, based on actuarial determined percentage of payroll costs, together with employees’ contribution, are intended to provide defined benefits when employees retire. This contribution includes amortization of past service costs over 30 years.

The County’s annual pension cost and net pension obligation to the Imperial County Employees’ Retirement System for the current and two proceeding years is as follows:

<u>Fiscal Year</u>	<u>Annual Required Contribution (ARC)</u>	<u>Percentage of ARC Contributed</u>
6/30/06	5,706	100%
6/30/05	5,922	100%
6/30/04	6,362	100%

**County of Imperial**  
**Notes to the Basic Financial Statements**  
**For the Fiscal Year Ended June 30, 2006**  
**(Dollars in Thousands)**

**Note 11 - Commitments and Contingencies**

**A. Grants**

The County recognizes as revenues, grant monies received as reimbursement for costs incurred in certain federal and state programs it administers. Amounts received or receivable from grantor agencies are subject to audit and adjustment by grantor agencies, principally the federal government. Any disallowed claims, including amounts already collected, may constitute a liability of the applicable funds. The amount, if any, of expenditures which may be disallowed by the grantor cannot be determined at this time although the County expects such amounts, if any, to be immaterial.

**B. Litigation**

The County is a defendant in various lawsuits which arise under the normal course of the operations. In the opinion of County Counsel and management, such claims against the County not covered by insurance would not materially affect the combined financial statements of the County.

**C. Risk Management**

The County is exposed to various risks of loss related to torts; theft of, damage to, and destruction of assets; errors and omissions; injuries to employees; and natural disasters. The County has established self-insurance programs for liability, workers' compensation, unemployment, medical malpractice and auto liability.

The liability insurance has a self-insured retention per claim of \$200 with excess liability insurance of up to \$25 million per occurrence being provided by independent carriers. Workers' compensation has a self-insured retention per claim of \$300. Unemployment claims are reimbursed to the State of California for claims paid on behalf of the County. The County has a self-insurance group health program for its employees. The health plan has self-insured retention per claim of \$150. The medical malpractice insurance has a self-insured retention per claim of \$200 with excess liability insurance of up to \$9.8 million per occurrence being provided by independent carriers. Auto liability insurance has a self-insured retention per claim of \$200.

The activities related to such programs are accounted for in the Loss Reserve Funds (Internal Service Funds). Revenues are primarily provided by other County funds and are intended to cover self-insured claims liabilities, insurance premiums and operating expenses. County officials believe that the assets of the Loss Reserve Funds, together with funds to be provided in the future, will provide adequate resources to meet the County's self-insured claim liabilities as they come true.

Liabilities are reported when it is probable that a loss has occurred and the amount of the loss can be reasonably estimated. Liabilities include an amount for claims that have been incurred but not reported (IBNRs). Claim liabilities are calculated considering the effects of inflation, recent pay-outs and other economic and social factors. Changes in the balances of claims liabilities during the past year are as follows:

Liability at June 30, 2005	\$ 8,828
Current year claims and changes in estimates	692
Claim payments	<u>( 2,469)</u>
Liability at June 30, 2006	<u>\$ 7,051</u>



**County of Imperial**  
**Notes to the Basic Financial Statements**  
**For the Fiscal Year Ended June 30, 2006**  
**(Dollars in Thousands)**

**D. Child Support Incentive Funds Audit**

On August 15, 2002, the State of California Department of Finance issued an audit report on the Imperial County Child Support Incentive Funds. The report addressed four areas: 1) understatement of excess incentive funds in the amount of \$28, 2) excess incentive encumbrances were overstated by \$2,754, 3) interest earned and unexpended in the amount of \$342 and a credit for (\$24) for disallowed EDP expenditures, and 4) overstatement of excess incentive expenditures in the amount of \$218. On February 21, 2006, a settlement was reached by the County of Imperial and the State of California. The County of Imperial is to pay \$1,350 to the State of California. The payments are to be made in 60 quarterly payments in the amount of \$23 per quarter beginning July 1, 2006.

**Note 12 – Notes Payable – TRANS**

Each fiscal year the County issues Tax and Revenue Anticipation Notes (TRANS) to provide financing of seasonal cash flow requirements for the General Fund's current year expenditures and to discharge its obligations and indebtedness during this period. The principal of the notes and the interest thereon are paid from pledged property taxes and revenues the County expects to receive during the fiscal year.

Short-term debt activity for the year ended June 30, 2006 was as follows:

	<u>Beginning Balance July 1, 2005</u>	<u>Draws</u>	<u>Repayments</u>	<u>Ending Balance June 30, 2006</u>
TRANS	\$ -	\$ 10,000	\$ (10,000)	\$ -

Subsequent to June 30, 2006 on July 1, 2006, the County issued \$10,000 in tax anticipation notes. The notes bear an interest rate of 3.60% and were underwritten by the Wells Fargo Bank, National Association of California.

**Note 13 – Deficit Fund Net Assets**

Deficits not visible in the basic financial statements are as follows:

- Closure/Postclosure Fund – Deficit net assets of (\$881) are the result of revenues being inadequate to cover expenses.
- State Transit Program Fund - Deficit net assets of (\$81) are the result of revenues being inadequate to cover expenditures. Management intends to fund deficit net assets with adjusted future charges over the next several years.
- Centralized Mail System Fund – Deficit net assets of (\$46) are the result of revenues being inadequate to cover expenditures. Management intends to fund deficit net assets with adjusted future charges over the next four years.
- Information Systems Fund – Deficit net assets of (\$19) are the result of revenues being inadequate to cover expenditures. Management intends to fund deficit net assets with adjusted future charges over the next several years.





**Required Supplementary Information  
(Other than MD & A)**



**COUNTY OF IMPERIAL**  
**Required Supplementary Information**  
**For the Fiscal Year Ended June 30, 2006**

**Schedule of Funding Progress**  
(amounts express in millions)

Actuarial Valuation Date	Actuarial Accrued Liability (AAL) (a)	Actuarial Value of Plan Assets (b)	Total Unfunded Actuarial Accrued Liability (UAAL) (b-a)	Funded Ratio (a/b)	Annual Covered Payroll (e)	UAAL As A Percentage of Annual Covered Payroll (c/e)
6-30-06	\$ 401.9	\$ 390.3	\$ 11.6	97.1%	71.7	16.2%
6-30-05	366.2	361.4	4.8	98.7%	67.0	7.2%
6-30-04	321.2	326.6	(5.4)	101.7%	67.9	(8.0%)
6-30-03	307.3	301.0	6.3	97.9%	67.7	9.3%
6-30-02	281.3	276.7	4.6	98.4%	71.7	6.4%
6-30-01	259.1	286.5	(27.4)	110.6%	62.8	(43.6%)
6-30-00	230.0	306.6	(76.6)	133.3%	52.7	(145.4%)
6-30-99	207.2	262.1	(54.9)	126.5%	44.7	(122.8%)
6-30-98 (a);(b)	189.7	239.9	(50.2)	126.5%	41.0	(122.4%)
6-30-97	166.7	171.7	(5.0)	103.0%	41.7	(12.0%)
6-30-96 (a);(b)	146.2	132.5	13.7	90.6%	39.6	34.6%
6-30-95 (a)	143.2	118.7	24.5	82.9%	40.3	60.8%
6-30-94 (a);(b)	124.1	96.7	27.4	77.9%	34.5	79.4%

(a) Actuarial valuations are performed biennially with updates annually. For the fiscal years indicated, the actuary provided updates.

(b) Assets valuation was converted to Market Value.

**COUNTY OF IMPERIAL**  
**Statement of Revenues, Expenditures and Changes in Fund Balances - Budget and Actual**  
**General Fund**  
Year Ended June 30, 2006  
(amounts expressed in thousands)

	<u>Budgeted Amounts</u>		<u>Actual Amounts</u>	<u>Variance with Final Budget - Positive (Negative)</u>
	<u>Original</u>	<u>Final</u>		
<b>Revenues:</b>				
Taxes	\$ 19,711	\$ 19,711	\$ 22,440	\$ 2,729
Licenses and permits	2,119	2,153	2,089	(64)
Fines, Forfeitures & Penalties	3,522	3,522	4,441	919
Use of Money & Property	1,946	3,062	2,660	(402)
Intergovernmental Aid	73,072	74,792	74,774	(18)
Federal aid	40,923	41,887	35,328	(6,559)
Charges for Services	21,582	21,540	19,278	(2,262)
Total revenues	<u>162,875</u>	<u>166,667</u>	<u>161,010</u>	<u>(5,657)</u>
<b>Expenditures:</b>				
Current:				
General Government	18,634	21,738	19,157	2,581
Public Protection	49,699	51,558	48,624	2,934
Health & Sanitation	28,683	31,645	27,150	4,495
Public Assistance	70,702	70,945	64,623	6,322
Parks and Recreation	573	573	585	(12)
Total expenditures	<u>168,291</u>	<u>176,459</u>	<u>160,139</u>	<u>16,320</u>
Excess of revenues over expenditures	<u>(5,416)</u>	<u>(9,792)</u>	<u>871</u>	<u>10,663</u>
<b>Other financing sources (uses):</b>				
Transfers	-	-	-	-
Encumbrances	-	-	-	-
Endowment Funds	-	-	7,061	7,061
COP Bonds Uses	-	-	(158)	(158)
Proceeds of COP Bonds	-	-	-	-
Net change in fund balances	<u>(5,416)</u>	<u>(9,792)</u>	<u>7,774</u>	<u>17,566</u>
<b>Fund balances - beginning</b>	<u>34,412</u>	<u>34,412</u>	<u>34,412</u>	<u>-</u>
<b>Fund balances - ending</b>	<u>\$ 28,996</u>	<u>\$ 24,620</u>	<u>\$ 42,186</u>	<u>\$ 17,566</u>

The notes to the financial statements are an integral part of this statement.



**OTHER SUPPLEMENTAL  
INFORMATION**





## **Non-major Governmental Funds**

### **Special Revenue Funds**

Special Revenue Funds account for revenues derived from specific taxes or other designated revenue sources. Primary revenue sources are: taxes, fines, forfeitures and penalties; use of money and property; aid from other governmental agencies; charges for current services; and other revenues. Expenditures are made only for specific activities legally authorized to be financed from the individual funds.

**Library** - The County Library District, serving a population of approximately 45,300, encompasses all of the unincorporated areas in Imperial County and all cities except Brawley, Calexico, El Centro and Imperial. The Library is located in rural El Centro with branches in Calipatria, Heber, Holtville, Niland, Ocotillo, Desert Shores, Salton City, and Westmorland. The Library collection is supplemented in various ways, including participation with the Serra Cooperative Library System in San Diego and Imperial Counties. Inter-library loan service is available with local libraries and other libraries in California and the California State Library.

**Fire Protection** - The Fire Department is responsible for fire protection only in certain unincorporated areas of the County. To augment its central core of fire-fighting personnel, the County has entered into contractual agreements with incorporated areas near these jurisdictions.

**Public Works Roads Fund** - This fund was established to provide for maintenance and construction of roadways and for specialized engineering services to other governmental units and the public. Revenues consist primarily of the County's share of State highway user's tax and are supplemented by Federal funds, vehicle code fines, and fees and reimbursements for engineering services provided.

**State/Federal Jail Improvement Funds** - The State/Federal Jail Improvement funds were created to account for expenditures to improve jail conditions. These expenditures are reimbursed by the Federal Government and by the State Government.

**Criminal Justice Facilities Fund** - The monies in this fund together with any interest earned thereon may be used for construction, reconstruction, expansion, improvement, operation, or maintenance of County criminal justice and court facilities, and for improvement of criminal justice automated information systems; provided, that in Imperial County, money deposited each year in this fund may also be used for the maintenance, operation, construction, reconstruction, or expansion of County juvenile justice rehabilitation facilities.

## **Non-major Governmental Funds**

**Geothermal Administration** - This budget unit funds the geothermal related activities within the County Departments. Geothermal administration encompasses reviewing geothermal applications, coordination of geothermal activities, providing information within the industry and to the general public and updating various policies and procedures as they relate to geothermal.

**Service Authority Freeway Emergency** - This budget unit was established to identify revenues and expenditures for the installation of emergency call boxes on the Imperial County freeway system.

**Public Works Solid Waste** - This budget unit reflects the cost of the Solid Waste Disposal Program including operation, acquisition, source reduction recycling program, and Closure/Post-Closure requirements. Revenue from user fees, Joint Powers Agreement and charges will be sufficient to make the program fully self-supporting, without a contribution from the County General Fund. The Board established this Special Revenue fund to more accurately reflect the expenditures and revenues associated with the Solid Waste Disposal Program.

**AB443 Local Assistance Law Enforcement Grant** – This budget unit was established to account for funds received from the State to enhance law enforcement activities in rural and small counties.

**Sheriff's Information Technology System** – This budget was established to account for activities related to the expenses regarding the modernization of the Sheriff's Department Information Systems.

**Federal Asset Forfeiture** - In addition to any other fees required by law, a processing fee of eight dollars (\$8) shall be assessed for each disbursement of money collected under a writ of attachment, execution, possession, or sale,. But excluding any action by the district attorney's office for the establishment or enforcement of a child support obligation. The fee shall be collected from the judgment debtor in addition to, and in th same manner as, the money collected under the writ. All proceeds of this fee shall be deposited in a special fund in the county treasury. A separate accounting of funds deposited shall be maintained fo reach depositor, and funds deposited shall be for the exclusive use of the depositor.

Seventy percent of the moneys in the special fund shall be expended to supplement the county's cost for vehicle fleet replacement and equipment for the sheriff and the marshal. Thirty percent of the moneys in the special fund shall be expended to supplement the county's cost of vehicle and equipment maintenance for the sheriff and the marshal, and for the county's expenses in administering the funds.

No fee shall be charged where the only disbursement is the return of the judgment creditor's deposit for costs.

**BioTerrorism Preparedness** – This account was established to account for funds dedicated to the preparation of a Bio Terrorism Response plan.

**Medi-Cal/CMSP** - To separate the Medi-Cal and CMSP revenues and expenditures from our general fund. Per CEO request.

**Imperial County Economic Development Funds (ICCED)** - The ICCED funds account for revenues and expenditures for various activities and programs including USDA Small Business RLF, ICCED Special Expense Fund, Home Biz Micro-Training, ICCED Micro-Lending Program, USDA POE Waste Water, Gossner Foods, USDA RLF ICCED, ICCED Housing Rehab., Census 2000 County Cost, Heber Housing Rehab. 2000, Ocotillo Housing Rehab., Colonia Technical Asst. Prg., CDBG Micro-Enterprise, CDBG Revolving Loan Fund, CDBG General 1984, CDBG 1984 Jobs Bill, CDBG State, CDBG 1985, Heber Housing Rehab., Mesquite Lake CDBG, Geo. Info. Sys. ICCED, Colonia II Planning Grant, CDBG, Scattered Sites Housing, Colonia III & IV Grant, Enterprise Community, POE Colonia Water Svc., Home Funds 2001, Rural Business Enterprise, Econ. Dev. PTA Grant, CITCA E-Commerce, CDBG Business Loans/Infrastructure, Comm. Adj. Inv. Prg. Grant, Complete Planning & Tech., and CDBG Housing Rehab.

**Other Special Revenue Funds** - Account for revenues received for various activities and programs including Public Health Environmental Serv., Violence Against Women Pros. Unit, Gateway CSA, IV Food Bank, High Risk Youth TR Student, Major Narco Vert. Pros., HIDTA District Attorney, Juvenile Crime Enforce. & ACG II, School to Work, New River Task Force, Partner Public Health, WIA Funds, Youth Opp. Grant-SOS, SOS Grant Probation, Local Law Enforcement Block Grant, Drug Court, Glamis Dune Grant, Sugar Cane Prj. Ag. Ext., Assessor PTA Program, Fish & Game, Statutory Rape Vertical Prosecution Unit, Office of Emergency Service, Geothermal Admin., Substance Abuse/Perinatal, Probation Training, Sheriff Standard Training, City of Imperial Fire Service, HIDTA Grant Sheriff, Child Abuse (AB1733), E.C. Training Center CYA, Victim Witness Asst., IVAG, Park Bond Act Pioneer Park, Substance Abuse, AB 75 Health, Internet Access Info. Syst., Whitefly Mgmt. Comm., Integrated Waste Mgmt., P.W. Solid Waste Disposal, 1980 Park Bond Act, Desert Agri., Inst., Air Pollution Hazardous Material, Air Pollution Control Special, Park Bond Act Red Hill, Park Bond Act Heber Dunes, Special Prosecutions Unit, Area Agency on Aging, Tobacco Education, Park Bond Act 1988, ARID, OET, Volunteer Program, Source Reduction Recy. Elm., Fiber Optic Network, CNG Facility, Federal Asset Forfeiture, State Asset Forfeiture, Prior Fed. Asset Forfeiture, California Witness Prog., Substance Abuse & Crime Prev., AB 1913 Probation, EDA Grant Probation, SARB Probation, EPSDT Probation, Substance Abuse 2000 Prop. 36, EPSDT FRC Brawley Probation, Star Grant OET, 2000 LLEBG Grant, CX Gang Violence Supp., ICCFFC Juv. Hall Rec. Home, Reclamation Grant, 2001-03 LLEBG Prg., Boating Grant Salton Sea, Street Interdiction Team, Inmate Parenting, Bio-Terrorism Preparedness, IVROP Probation, FAA Grant # 14 Sec. Reg., TSA Grant Security, COPPS School Com. Pol, LLEBG 2002 LB-BX, Off-Highway Enforcement, District Attorney IVSIT.

## **Non-major Governmental Funds**

### **Capital Projects Funds**

The purpose of these funds are to separately account for major acquisition, construction and additions to County buildings and land other than those financed by Enterprise Funds and Internal Service Funds.

### **Debt Service Fund**

The Debt Service Fund is used to account for the accumulation of resources for the payment of principal and interest on the county's pension obligation bonds. There are no combining statements because the County has one Debt Service fund which is reported on the non-major combined financial statements.

**COUNTY OF IMPERIAL**  
**Combining Balance Sheet**  
**Nonmajor Governmental Funds**  
June 30, 2006  
(amounts expressed in thousands)

	<b>Special Revenue Funds</b>	<b>Capital Projects Funds</b>	<b>Debt Service Funds</b>	<b>Total</b>
<b>Assets:</b>				
Cash and cash equivalents	\$ 18,423	\$ 800	\$ 4,105	\$ 23,328
Cash with Fiscal Agent	53	-	-	53
Deposits with Others	115	-	-	115
Receivables (net):				
Accounts	1,180	21	-	1,201
Interest	141	7	23	171
Taxes	516	-	-	516
Loan	6,730	-	-	6,730
Due from other funds	772	-	-	772
Inventories and Prepaid Expenses	238	-	-	238
	<u>\$ 28,168</u>	<u>\$ 828</u>	<u>\$ 4,128</u>	<u>\$ 33,124</u>
<b>Liabilities and Fund Balances:</b>				
<b>Liabilities:</b>				
Accounts payable	\$ 1,034	\$ 146	\$ -	\$ 1,180
Accrued Payroll	556	-	-	556
Interest Payable	12	3	-	15
Due to other funds	1,965	-	-	1,965
	<u>3,567</u>	<u>149</u>	<u>-</u>	<u>3,716</u>
<b>Fund balances:</b>				
<b>Reserved for:</b>				
Encumbrances	9,237	1,644	-	10,881
Inventories	238	-	-	238
Debt Service	-	-	4,128	4,128
Loan/Deposits with Others	6,845	-	-	6,845
Other	8	1	-	9
Unreserved, undesignated	8,273	(966)	-	7,307
	<u>24,601</u>	<u>679</u>	<u>4,128</u>	<u>29,408</u>
Total fund balances	<u>24,601</u>	<u>679</u>	<u>4,128</u>	<u>29,408</u>
Total liabilities and fund balances	<u>\$ 28,168</u>	<u>\$ 828</u>	<u>\$ 4,128</u>	<u>\$ 33,124</u>

**COUNTY OF IMPERIAL**  
**Combining Statement of Revenues, Expenditures and Changes in Fund Balances**  
**Nonmajor Governmental Funds**  
For the Fiscal Year Ended June 30, 2006  
(amounts expressed in thousands)

	<u>Special Revenue Funds</u>	<u>Capital Projects Funds</u>	<u>Debt Service Funds</u>	<u>Total</u>
<b>Revenues:</b>				
Taxes	\$ 3,261	\$ -	\$ -	\$ 3,261
Licenses & Permits	1,560	-	-	1,560
Fines, Forfeitures & Penalties	1,373	192	-	1,565
Use of Money & Property	645	96	46	787
State Aid	34,253	-	-	34,253
Federal Aid	7,082	1,451	-	8,533
Charges for Services	9,708	190	-	9,898
Sale of Fixed Assets	-	-	-	-
Other Revenues	185	233	5,659	6,077
Total Revenues	<u>58,067</u>	<u>2,162</u>	<u>5,705</u>	<u>65,934</u>
<b>Expenditures:</b>				
Current:				
General Government	437	3,670	5,022	9,129
Public Protection	14,097	-	-	14,097
Health & Sanitation	6,394	-	-	6,394
Public Assistance	22,730	-	-	22,730
Public Ways & Facilities	13,730	-	-	13,730
Education	-	-	-	-
Total expenditures	<u>57,388</u>	<u>3,670</u>	<u>5,022</u>	<u>66,080</u>
<b>Other Financing Sources (Uses):</b>				
Changes in Reserves	3,553	-	-	3,553
Transfers In (Out)	-	-	-	-
Total Other Financing Sources (Uses)	<u>3,553</u>	<u>-</u>	<u>-</u>	<u>3,553</u>
Net change in fund balances	4,232	(1,508)	683	3,407
<b>Fund balances - beginning</b>	<u>20,369</u>	<u>2,187</u>	<u>3,445</u>	<u>26,001</u>
<b>Fund balances - ending</b>	<u>\$ 24,601</u>	<u>\$ 679</u>	<u>\$ 4,128</u>	<u>\$ 29,408</u>

**COUNTY OF IMPERIAL**  
**Combining Balance Sheet**  
**Nonmajor Special Revenue Funds**  
For the Fiscal Year Ended June 30, 2006  
(amounts expressed in thousands)

	<u>Library</u>	<u>Fire Protection</u>	<u>Public Works Roads</u>	<u>State/ Federal Jail Improvements</u>	<u>Criminal Justice Facilities</u>
<b>Assets:</b>					
Cash and cash equivalents	\$ 833	\$ 936	\$ 3,248	\$ 1,249	\$ 1,798
Cash with Fiscal Agent	-	-	-	-	-
Deposits with Others	-	-	-	-	-
Receivables (net):					
Accounts	-	-	-	-	74
Interest	6	-	23	8	12
Taxes	108	408	-	-	-
Loan	-	-	889	-	-
Due from other funds	5	36	231	(8)	-
Inventories and Prepaid Expenses	-	-	242	-	-
	<u>\$ 952</u>	<u>\$ 1,380</u>	<u>\$ 4,633</u>	<u>\$ 1,249</u>	<u>\$ 1,884</u>
<b>Liabilities and Fund Balances:</b>					
Liabilities:					
Accounts payable	\$ 38	\$ 25	\$ 345	\$ 59	\$ -
Accrued Payroll	8	61	150	-	-
Interest Payable	-	-	-	-	-
Due to other funds	3	1	9	7	-
	<u>49</u>	<u>87</u>	<u>504</u>	<u>66</u>	<u>-</u>
<b>Fund balances:</b>					
Reserved for:					
Encumbrances	150	895	4,014	242	-
Inventories	-	-	242	-	-
Debt Service	-	-	-	-	-
Loan/Deposits with Others	-	-	889	-	-
Other	-	-	-	-	-
Unreserved, undesignated	753	398	(1,016)	941	1,884
	<u>903</u>	<u>1,293</u>	<u>4,129</u>	<u>1,183</u>	<u>1,884</u>
Total liabilities and fund balances	<u>\$ 952</u>	<u>\$ 1,380</u>	<u>\$ 4,633</u>	<u>\$ 1,249</u>	<u>\$ 1,884</u>

**COUNTY OF IMPERIAL**  
**Combining Balance Sheet**  
**Nonmajor Special Revenue Funds**  
For the Fiscal Year Ended June 30, 2006  
(amounts expressed in thousands)

	<b>Geothermal Admin.</b>	<b>Serv. Authority Freeway Emerg.</b>	<b>P.W. Solid Waste Disposal</b>	<b>Federal Asset Forfeiture</b>	<b>AB443 Local Law Enforcement</b>
<b>Assets:</b>					
Cash and cash equivalents	\$ 2,384	\$ 999	\$ 561	\$ 589	\$ 1,540
Cash with Fiscal Agent	-	-	-	-	-
Deposits with Others	-	-	-	-	-
Receivables (net):					
Accounts	-	13	28	-	-
Interest	19	7	6	4	10
Taxes	-	-	-	-	-
Loan	-	-	-	-	-
Due from other funds	(52)	-	3	-	-
Inventories and Prepaid Expenses	-	-	-	-	-
<b>Total assets</b>	<b>\$ 2,351</b>	<b>\$ 1,019</b>	<b>\$ 598</b>	<b>\$ 593</b>	<b>\$ 1,550</b>
<b>Liabilities and Fund Balances:</b>					
<b>Liabilities:</b>					
Accounts payable	\$ -	\$ 7	\$ 52	\$ -	\$ -
Accrued Payroll	-	-	19	-	3
Interest Payable	-	-	-	-	-
Due to other funds	80	-	91	6	-
<b>Total Liabilities</b>	<b>80</b>	<b>7</b>	<b>162</b>	<b>6</b>	<b>3</b>
<b>Fund balances:</b>					
<b>Reserved for:</b>					
Encumbrances	15	265	520	14	-
Inventories	-	-	-	-	-
Debt Service	-	-	-	-	-
Loan/Deposits with Others	-	-	-	-	-
Other	-	-	-	-	-
Unreserved, undesignated	2,256	747	(84)	573	1,547
<b>Total fund balances</b>	<b>2,271</b>	<b>1,012</b>	<b>436</b>	<b>587</b>	<b>1,547</b>
<b>Total liabilities and fund balances</b>	<b>\$ 2,351</b>	<b>\$ 1,019</b>	<b>\$ 598</b>	<b>\$ 593</b>	<b>\$ 1,550</b>



**COUNTY OF IMPERIAL**  
**Combining Balance Sheet**  
**Nonmajor Special Revenue Funds**  
For the Fiscal Year Ended June 30, 2006  
(amounts expressed in thousands)

	<b>Sheriff Info. Tech System</b>	<b>Bio- Terrorism Prepard</b>	<b>Medi-Cal/ CMSP Fund</b>	<b>ICCED Funds</b>	<b>Other Special Revenue Funds</b>	<b>Total</b>
<b>Assets:</b>						
Cash and cash equivalents	\$ 1,095	\$ 612	\$ 2,029	\$ 266	\$ 284	\$18,423
Cash with Fiscal Agent	-	-	-	-	53	53
Deposits with Others	-	-	-	44	71	115
Receivables (net):					-	
Accounts	-	-	-	-	1,065	1,180
Interest	7	4	10	5	20	141
Taxes	-	-	-	-	-	516
Loan	-	-	-	5,841	-	6,730
Due from other funds	-	-	-	47	510	772
Inventories and Prepaid Expenses	-	-	-	-	(4)	238
	<u>\$ 1,102</u>	<u>\$ 616</u>	<u>\$ 2,039</u>	<u>\$ 6,203</u>	<u>\$ 1,999</u>	<u>\$28,168</u>
<b>Liabilities and Fund Balances:</b>						
Liabilities:						
Accounts payable	\$ 172	\$ -	\$ -	\$ 10	\$ 326	\$ 1,034
Accrued Payroll	-	-	-	-	315	556
Interest Payable	-	-	-	6	6	12
Due to other funds	-	-	1,204	26	538	1,965
	<u>172</u>	<u>-</u>	<u>1,204</u>	<u>42</u>	<u>1,185</u>	<u>3,567</u>
<b>Fund balances:</b>						
Reserved for:						
Encumbrances	1,048	-	-	-	2,074	9,237
Inventories	-	-	-	-	(4)	238
Debt Service	-	-	-	-	-	-
Loan/Deposits with Others	-	-	-	5,885	71	6,845
Other	-	-	-	-	8	8
Unreserved, undesignated	(118)	616	835	276	(1,335)	8,273
	<u>930</u>	<u>616</u>	<u>835</u>	<u>6,161</u>	<u>814</u>	<u>24,601</u>
Total liabilities and fund balances	<u>\$ 1,102</u>	<u>\$ 616</u>	<u>\$ 2,039</u>	<u>\$ 6,203</u>	<u>\$ 1,999</u>	<u>\$28,168</u>

**COUNTY OF IMPERIAL**  
**Combining Statement of Revenues, Expenditures, and Changes in Fund Balance**  
**Nonmajor Special Revenue Funds**  
For the Fiscal Year Ended June 30, 2006  
(amounts expressed in thousands)

	<u>Library</u>	<u>Fire Protection</u>	<u>Public Works Roads</u>	<u>State/ Federal Jail Improvements</u>
<b>Revenues:</b>				
Taxes	\$ 571	\$ 2,690	\$ -	\$ -
Licenses & Permits	-	-	604	-
Fines, Forfeitures & Penalties	-	-	-	-
Use of Money & Property	21	36	71	28
Intergovernmental	142	81	11,953	95
Federal Aid	-	-	-	468
Charges for Services	3	1,157	767	-
Sale of Fixed Assets	-	-	-	-
Other Revenues	-	-	1	-
Total Revenues	<u>737</u>	<u>3,964</u>	<u>13,396</u>	<u>591</u>
<b>Expenditures:</b>				
Current:				
General Government	-	-	-	-
Public Protection	-	2,595	-	294
Health & Sanitation	-	-	-	-
Public Assistance	733	-	-	-
Public Ways & Facilities	-	-	13,223	-
Total expenditures	<u>733</u>	<u>2,595</u>	<u>13,223</u>	<u>294</u>
<b>Other Financing Sources (Uses):</b>				
Changes in Reserves	-	-	-	-
Transfers In (Out)	-	-	-	-
Total Other Financing Sources (Uses)	<u>-</u>	<u>-</u>	<u>-</u>	<u>-</u>
Net change in fund balances	4	1,369	173	297
<b>Fund balances - beginning</b>	<u>899</u>	<u>(76)</u>	<u>3,956</u>	<u>886</u>
<b>Fund balances - ending</b>	<u>\$ 903</u>	<u>\$ 1,293</u>	<u>\$ 4,129</u>	<u>\$ 1,183</u>

**COUNTY OF IMPERIAL**  
**Combining Statement of Revenues, Expenditures, and Changes in Fund Balance**  
**Nonmajor Special Revenue Funds**  
For the Fiscal Year Ended June 30, 2006  
(amounts expressed in thousands)

	<b>Criminal Justice Facilities</b>	<b>Geothermal Admin.</b>	<b>Serv. Authority Freeway Emerg.</b>	<b>Federal Asset Forfeiture</b>
<b>Revenues:</b>				
Taxes	\$ -	\$ -	\$ -	\$ -
Licenses & Permits	-	-	-	-
Fines, Forfeitures & Penalties	716	-	-	487
Use of Money & Property	43	83	25	11
Intergovernmental	-	-	163	-
Federal Aid	-	105	-	-
Charges for Services	-	(23)	-	-
Sale of Fixed Assets	-	-	-	-
Other Revenues	-	-	-	-
Total Revenues	<u>759</u>	<u>165</u>	<u>188</u>	<u>498</u>
<b>Expenditures:</b>				
Current:				
General Government	-	-	-	-
Public Protection	371	-	-	168
Health & Sanitation	-	-	-	-
Public Assistance	-	1,284	-	-
Public Ways & Facilities	-	-	68	-
Total expenditures	<u>371</u>	<u>1,284</u>	<u>68</u>	<u>168</u>
<b>Other Financing Sources (Uses):</b>				
Changes in Reserves				
Transfers In (Out)	-	-	-	-
Total Other Financing Sources (Uses)	<u>-</u>	<u>-</u>	<u>-</u>	<u>-</u>
Net change in fund balances	388	(1,119)	120	330
<b>Fund balances - beginning</b>	<u>1,496</u>	<u>3,390</u>	<u>892</u>	<u>257</u>
<b>Fund balances - ending</b>	<u>\$ 1,884</u>	<u>\$ 2,271</u>	<u>\$ 1,012</u>	<u>\$ 587</u>

**COUNTY OF IMPERIAL**  
**Combining Statement of Revenues, Expenditures, and Changes in Fund Balance**  
**Nonmajor Special Revenue Funds**  
For the Fiscal Year Ended June 30, 2006  
(amounts expressed in thousands)

	<b>P.W. Solid Waste Disposal</b>	<b>AB443 Local Law Enforcement</b>	<b>Sheriff's Info. Tech System</b>	<b>Bio Terror Preparedness</b>
<b>Revenues:</b>				
Taxes	\$ -	\$ -	\$ -	\$ -
Licenses & Permits	-	-	-	-
Fines, Forfeitures & Penalties	-	-	-	-
Use of Money & Property	17	38	33	15
Intergovernmental	3	500	35	222
Federal Aid	-	-	-	-
Charges for Services	1,907	-	-	-
Sale of Fixed Assets	-	-	-	-
Other Revenues	-	-	-	-
Total Revenues	<u>1,927</u>	<u>538</u>	<u>68</u>	<u>237</u>
<b>Expenditures:</b>				
Current:				
General Government	-	-	-	-
Public Protection	-	131	821	126
Health & Sanitation	1,990	-	-	-
Public Assistance	-	-	-	-
Public Ways & Facilities	-	-	-	-
Total expenditures	<u>1,990</u>	<u>131</u>	<u>821</u>	<u>126</u>
<b>Other Financing Sources (Uses):</b>				
Changes in Reserves	-	-	-	-
Transfers In (Out)	-	-	-	-
Total Other Financing Sources (Uses)	<u>-</u>	<u>-</u>	<u>-</u>	<u>-</u>
Net change in fund balances	(63)	407	(753)	111
<b>Fund balances - beginning</b>	<u>499</u>	<u>1,140</u>	<u>1,683</u>	<u>505</u>
<b>Fund balances - ending</b>	<u>\$ 436</u>	<u>\$ 1,547</u>	<u>\$ 930</u>	<u>\$ 616</u>

**COUNTY OF IMPERIAL**  
**Combining Statement of Revenues, Expenditures, and Changes in Fund Balance**  
**Nonmajor Special Revenue Funds**  
For the Fiscal Year Ended June 30, 2006  
(amounts expressed in thousands)

	<b>Medi-Cal CMSP Fund</b>	<b>ICCED Funds</b>	<b>Other Special Revenue Funds</b>	<b>Total</b>
<b>Revenues:</b>				
Taxes	\$ -	\$ -	\$ -	\$ 3,261
Licenses & Permits	-	-	956	1,560
Fines, Forfeitures & Penalties	-	-	170	1,373
Use of Money & Property	30	(1)	195	645
Intergovernmental	5,386	5,300	10,373	34,253
Federal Aid	-	548	5,961	7,082
Charges for Services	-	250	5,647	9,708
Sale of Fixed Assets	-	-	-	-
Other Revenues	-	5	179	185
<b>Total Revenues</b>	<b>5,416</b>	<b>6,102</b>	<b>23,481</b>	<b>58,067</b>
<b>Expenditures:</b>				
Current:				
General Government	-	-	437	437
Public Protection	-	-	9,591	14,097
Health & Sanitation	-	-	4,404	6,394
Public Assistance	4,926	5,495	10,292	22,730
Public Ways & Facilities	-	-	439	13,730
<b>Total expenditures</b>	<b>4,926</b>	<b>5,495</b>	<b>25,163</b>	<b>57,388</b>
<b>Other Financing Sources (Uses):</b>				
Changes in Reserves	-	3,551	2	3,553
Transfers In (Out)	-	-	-	-
<b>Total Other Financing Sources (Uses)</b>	<b>-</b>	<b>3,551</b>	<b>2</b>	<b>3,553</b>
<b>Net change in fund balances</b>	<b>490</b>	<b>4,158</b>	<b>(1,680)</b>	<b>4,232</b>
<b>Fund balances - beginning</b>	<b>345</b>	<b>2,003</b>	<b>2,494</b>	<b>20,369</b>
<b>Fund balances - ending</b>	<b>\$ 835</b>	<b>\$ 6,161</b>	<b>\$ 814</b>	<b>\$ 24,601</b>

**COUNTY OF IMPERIAL**  
**Schedule of Revenues, Expenditures, and Changes in Fund Balances-Budget and Actual**  
**Library**  
**For the Fiscal Year Ended June 30, 2006**  
(amounts expressed in thousands)

	<u>Budgeted Amounts</u>		<u>Actual Amounts</u>	<u>Variance with Final Budget - Positive (Negative)</u>
	<u>Original</u>	<u>Final</u>		
<b>Revenues:</b>				
Taxes	\$ 438	\$ 438	\$ 571	\$ 133
Use of Money & Property	20	20	21	1
Intergovernmental Revenue	97	117	142	25
Charges for Services	3	4	4	-
Other Revenues	-	-	-	-
Total revenues	<u>558</u>	<u>579</u>	<u>738</u>	<u>159</u>
<b>Expenditures:</b>				
Education:				
Salaries and Benefits	454	454	375	79
Services and Supplies	405	484	359	125
Other Charges	5	5	-	5
Intra Fund Transfers	-	-	-	-
Contribution Non-County	-	-	-	-
Total expenditures	<u>864</u>	<u>943</u>	<u>734</u>	<u>209</u>
<b>Other Financing Sources:</b>				
Changes in Reserves	-	-	-	-
Transfers In (Out)	-	-	-	-
Total Other Financing Sources (Uses)	<u>-</u>	<u>-</u>	<u>-</u>	<u>-</u>
Excess of revenues over expenditures	<u>(306)</u>	<u>(364)</u>	<u>4</u>	<u>(50)</u>
<b>Fund balances - beginning</b>	<u>899</u>	<u>899</u>	<u>899</u>	<u>-</u>
<b>Fund balances - ending</b>	<u>\$ 593</u>	<u>\$ 535</u>	<u>\$ 903</u>	<u>\$ (50)</u>

**COUNTY OF IMPERIAL**  
**Schedule of Revenues, Expenditures, and Changes in Fund Balances-Budget and Actual**  
**Fire Protecton**  
**For the Fiscal Year Ended June 30, 2006**  
(amounts expressed in thousands)

	<b>Budgeted Amounts</b>		<b>Actual Amounts</b>	<b>Variance with Final Budget - Positive (Negative)</b>
	<b>Original</b>	<b>Final</b>		
<b>Revenues:</b>				
Taxes	\$ 2,211	\$ 2,211	\$ 2,690	\$ 479
Use of Money & Property	-	36	36	-
Intergovernmental Revenues	49	-	81	81
Charges for Services	-	-	-	-
Other Revenues	1,115	1,115	1,157	42
Sale of Fixed Assets	450	(450)	-	450
Total revenues	<u>3,825</u>	<u>2,912</u>	<u>3,964</u>	<u>1,052</u>
<b>Expenditures:</b>				
Public Protection:				
Salaries and Benefits	2,277	2,277	2,237	40
Services and Supplies	1,167	1,284	1,181	103
Other Charges	122	130	111	19
Capital Outlay	835	875	35	840
Intra Fund Transfers	(502)	(502)	(237)	(265)
Inter Fund Transfers	(75)	(529)	(732)	203
Contingencies	1	1	-	1
Total expenditures	<u>3,825</u>	<u>3,536</u>	<u>2,595</u>	<u>941</u>
<b>Other Financing Sources:</b>				
Transfers In (Out)	-	-	-	-
Total Other Financing Sources (Uses)	<u>-</u>	<u>-</u>	<u>-</u>	<u>-</u>
Excess of revenues over expenditures	<u>-</u>	<u>(624)</u>	<u>1,369</u>	<u>(1,993)</u>
<b>Fund balances - beginning</b>	<u>(76)</u>	<u>(76)</u>	<u>(76)</u>	<u>-</u>
<b>Fund balances - ending</b>	<u>\$ (76)</u>	<u>\$ (700)</u>	<u>\$ 1,293</u>	<u>\$ (1,993)</u>

**COUNTY OF IMPERIAL**  
**Schedule of Revenues, Expenditures, and Changes in Fund Balances-Budget and Actual**  
**Public Works Roads**  
**For the Fiscal Year Ended June 30, 2006**  
(amounts expressed in thousands)

	<u>Budgeted Amounts</u>		<u>Actual Amounts</u>	<u>Variance with Final Budget - Positive (Negative)</u>
	<u>Original</u>	<u>Final</u>		
<b>Revenues:</b>				
Licenses & Permits	\$ 120	\$ 120	\$ 604	\$ 484
Use of Money & Property	50	50	71	21
Intergovernmental Revenue	14,158	14,377	11,953	(2,424)
Charges for Current Services	376	376	767	391
Other Revenues	-	-	-	-
Sale of Fixed Assets	22	-	1	1
Total revenues	<u>14,726</u>	<u>14,923</u>	<u>13,396</u>	<u>(1,527)</u>
<b>Expenditures:</b>				
Public Ways & Facilities:				
Salaries and Benefits	5,183	5,183	4,919	264
Services and Supplies	7,666	8,813	7,322	1,491
Other Charges	607	607	884	(277)
Capital Outlay	1,740	2,589	178	2,411
Inter Fund Transfers	20	(392)	(80)	(312)
Contingencies	100	100	-	100
Total expenditures	<u>15,316</u>	<u>16,900</u>	<u>13,223</u>	<u>3,677</u>
<b>Other Financing Sources:</b>				
Changes in Reserves	-	-	-	-
Transfers In (Out)	-	-	-	-
Total Other Financing Sources (Uses)	<u>-</u>	<u>-</u>	<u>-</u>	<u>-</u>
Excess of revenues over expenditures	<u>(590)</u>	<u>(1,977)</u>	<u>173</u>	<u>(2,150)</u>
<b>Fund balances - beginning</b>	<u>3,956</u>	<u>3,956</u>	<u>3,956</u>	<u>-</u>
<b>Fund balances - ending</b>	<u>\$ 3,366</u>	<u>\$ 1,979</u>	<u>\$ 4,129</u>	<u>\$ (2,150)</u>



**COUNTY OF IMPERIAL**  
**Schedule of Revenues, Expenditures, and Changes in Fund Balances-Budget and Actual**  
**State/Federal Jail Improvements**  
**For the Fiscal Year Ended June 30, 2006**  
(amounts expressed in thousands)

	<b>Budgeted Amounts</b>		<b>Actual Amounts</b>	<b>Variance with Final Budget - Positive (Negative)</b>
	<b>Original</b>	<b>Final</b>		
<b>Revenues:</b>				
Use of Money & Property	\$ 16	\$ 16	\$ 28	\$ 12
Intergovernmental Revenue	51	51	95	44
Federal aid	400	400	468	68
Total revenues	<u>467</u>	<u>467</u>	<u>591</u>	<u>124</u>
<b>Expenditures:</b>				
Public Protection:				
Services and Supplies	238	239	207	32
Capital Outlay	144	198	87	111
Inter Fund Transfers	65	41	-	41
Total expenditures	<u>447</u>	<u>478</u>	<u>294</u>	<u>184</u>
<b>Other Financing Sources:</b>				
Transfers In (Out)	-	-	-	-
Total Other Financing Sources (Uses)	<u>-</u>	<u>-</u>	<u>-</u>	<u>-</u>
Excess of revenues over expenditures	<u>20</u>	<u>(11)</u>	<u>297</u>	<u>(308)</u>
<b>Fund balances - beginning</b>	<u>886</u>	<u>886</u>	<u>886</u>	<u>-</u>
<b>Fund balances - ending</b>	<u>\$ 906</u>	<u>\$ 875</u>	<u>\$ 1,183</u>	<u>\$ (308)</u>

**COUNTY OF IMPERIAL**  
**Schedule of Revenues, Expenditures, and Changes in Fund Balances-Budget and Actual**  
**Criminal Justice Facilities**  
**For the Fiscal Year Ended June 30, 2006**  
(amounts expressed in thousands)

	<u>Budgeted Amounts</u>		<u>Actual Amounts</u>	<u>Variance with Final Budget - Positive (Negative)</u>
	<u>Original</u>	<u>Final</u>		
<b>Revenues:</b>				
Fines, Forfeitures & Penalties	\$ 450	\$ 450	\$ 716	\$ 266
Use of Money & Property	20	20	43	23
	<hr/>	<hr/>	<hr/>	<hr/>
Total revenues	470	470	759	289
<b>Expenditures:</b>				
Public Protection:				
Services and Supplies	313	313	223	90
Other Charges	148	148	148	-
Capital Assets	-	-	-	-
Interfund Transfers	-	-	-	-
	<hr/>	<hr/>	<hr/>	<hr/>
Total expenditures	461	461	371	90
<b>Other Financing Sources:</b>				
Transfers In (Out)	-	-	-	-
	<hr/>	<hr/>	<hr/>	<hr/>
Total Other Financing Sources (Uses)	-	-	-	-
Excess of revenues over expenditures	9	9	388	(379)
<b>Fund balances - beginning</b>	<hr/>	<hr/>	<hr/>	<hr/>
	1,496	1,496	1,496	-
<b>Fund balances - ending</b>	<hr/>	<hr/>	<hr/>	<hr/>
	\$ 1,505	\$ 1,505	\$ 1,884	\$ (379)

**COUNTY OF IMPERIAL**  
**Schedule of Revenues, Expenditures, and Changes in Fund Balances-Budget and Actual**  
**Geothermal Administration**  
**For the Fiscal Year Ended June 30, 2006**  
(amounts expressed in thousands)

	<b>Budgeted Amounts</b>		<b>Actual Amounts</b>	<b>Variance with Final Budget - Positive (Negative)</b>
	<b>Original</b>	<b>Final</b>		
<b>Revenues:</b>				
Use of Money & Property	\$ 95	\$ 95	\$ 83	\$ (12)
Federal Revenues	45	45	105	60
Charges for Services	22	22	(22)	(44)
Total revenues	<u>162</u>	<u>162</u>	<u>166</u>	<u>4</u>
<b>Expenditures:</b>				
Public Assistance:				
Services and Supplies	705	726	914	(188)
Other Charges	53	257	514	(257)
Intra-Fund Transfers	371	152	(143)	
Total expenditures	<u>1,129</u>	<u>1,135</u>	<u>1,285</u>	<u>(445)</u>
<b>Other Financing Sources:</b>				
Transfers In (Out)	-	-	-	-
Total Other Financing Sources (Uses)	<u>-</u>	<u>-</u>	<u>-</u>	<u>-</u>
Excess of revenues over expenditures	<u>(967)</u>	<u>(973)</u>	<u>(1,119)</u>	<u>146</u>
<b>Fund balances - beginning</b>	<u>3,390</u>	<u>3,390</u>	<u>3,390</u>	<u>-</u>
<b>Fund balances - ending</b>	<u>\$ 2,423</u>	<u>\$ 2,417</u>	<u>\$ 2,271</u>	<u>\$ 146</u>

**COUNTY OF IMPERIAL**  
**Schedule of Revenues, Expenditures, and Changes in Fund Balances-Budget and Actual**  
**Service Authority Freeway Emergency**  
**For the Fiscal Year Ended June 30, 2006**  
(amounts expressed in thousands)

	<b>Budgeted Amounts</b>		<b>Actual Amounts</b>	<b>Variance with Final Budget - Positive (Negative)</b>
	<b>Original</b>	<b>Final</b>		
<b>Revenues:</b>				
Use of Money & Property	\$ 15	\$ 15	\$ 25	\$ 10
Intergovernmental Revenue	130	130	163	33
Charges for Services	-	-	-	-
	<hr/>	<hr/>	<hr/>	<hr/>
Total revenues	145	145	188	43
<b>Expenditures:</b>				
Public Ways & Facilities:				
Services and Supplies	369	369	68	301
	<hr/>	<hr/>	<hr/>	<hr/>
Total expenditures	369	369	68	301
<b>Other Financing Sources:</b>				
Transfers In (Out)	-	-	-	-
	<hr/>	<hr/>	<hr/>	<hr/>
Total Other Financing Sources (Uses)	-	-	-	-
Excess of revenues over expenditures	<hr/> (224)	<hr/> (224)	<hr/> 120	<hr/> (344)
<b>Fund balances - beginning</b>	<hr/> 892	<hr/> 892	<hr/> 892	<hr/> -
<b>Fund balances - ending</b>	<hr/> <u>\$ 668</u>	<hr/> <u>\$ 668</u>	<hr/> <u>\$ 1,012</u>	<hr/> <u>\$ (344)</u>

**COUNTY OF IMPERIAL**  
**Schedule of Revenues, Expenditures, and Changes in Fund Balances-Budget and Actual**  
**Public Works Solid Waste Disposal**  
**For the Fiscal Year Ended June 30, 2006**  
(amounts expressed in thousands)

	<b>Budgeted Amounts</b>		<b>Actual Amounts</b>	<b>Variance with Final Budget - Positive (Negative)</b>
	<b>Original</b>	<b>Final</b>		
<b>Revenues:</b>				
Use of Money & Property	\$ 3	\$ 3	\$ 17	\$ 14
Intergovernmental Revenue	-	-	3	3
Charges for Services	1,861	1,861	1,907	46
	<hr/>	<hr/>	<hr/>	<hr/>
Total revenues	1,864	1,864	1,927	63
<b>Expenditures:</b>				
Health & Sanitation:				
Salaries and Benefits	712	712	599	(113)
Services and Supplies	1,654	2,124	1,242	(882)
Capital Outlay	176	492	149	(343)
Intra Fund Transfers		(225)		225
Contingenecies	20	20		(20)
	<hr/>	<hr/>	<hr/>	<hr/>
Total expenditures	2,562	3,123	1,990	(1,133)
<b>Other Financing Sources:</b>				
Transfers In (Out)	-	-	-	-
	<hr/>	<hr/>	<hr/>	<hr/>
Total Other Financing Sources (Uses)	-	-	-	-
	<hr/>	<hr/>	<hr/>	<hr/>
Excess of revenues over expenditures	(698)	(1,259)	(63)	(1,196)
	<hr/>	<hr/>	<hr/>	<hr/>
<b>Fund balances - beginning</b>	499	499	499	-
<b>Fund balances - ending</b>	<u>\$ (199)</u>	<u>\$ (760)</u>	<u>\$ 436</u>	<u>\$ (1,196)</u>

**COUNTY OF IMPERIAL**  
**Schedule of Revenues, Expenditures, and Changes in Fund Balances-Budget and Actual**  
**Federal Asset Forfeiture**  
**For the Fiscal Year Ended June 30, 2006**  
(amounts expressed in thousands)

	<b>Budgeted Amounts</b>		<b>Actual Amounts</b>	<b>Variance with Final Budget - Positive (Negative)</b>
	<b>Original</b>	<b>Final</b>		
<b>Revenues:</b>				
Use of Money & Property	\$ 6	\$ 6	\$ 11	\$ 5
Fines, Forfeitures & Penalties	30	30	487	457
	<hr/>	<hr/>	<hr/>	<hr/>
Total revenues	36	36	498	462
<b>Expenditures:</b>				
Public Protection:				
Services and Supplies	54	119	72	47
Capital Outlay	-	234	91	143
Intra Fund Transfers	-	(127)	5	(132)
	<hr/>	<hr/>	<hr/>	<hr/>
Total expenditures	54	226	168	58
<b>Other Financing Sources:</b>				
Transfers In (Out)	-	-	-	-
	<hr/>	<hr/>	<hr/>	<hr/>
Total Other Financing Sources (Uses)	-	-	-	-
Excess of revenues over expenditures	(18)	(190)	330	(520)
<b>Fund balances - beginning</b>	<hr/>	<hr/>	<hr/>	<hr/>
	257	257	257	-
<b>Fund balances - ending</b>	<hr/>	<hr/>	<hr/>	<hr/>
	\$ 239	\$ 67	\$ 587	\$ (520)

**COUNTY OF IMPERIAL**  
**Schedule of Revenues, Expenditures, and Changes in Fund Balances-Budget and Actual**  
**AB 443 Local Law Enforcement Grant**  
**For the Fiscal Year Ended June 30, 2006**  
(amounts expressed in thousands)

	<u>Budgeted Amounts</u>		<u>Actual Amounts</u>	<u>Variance with Final Budget - Positive (Negative)</u>
	<u>Original</u>	<u>Final</u>		
<b>Revenues:</b>				
Use of Money & Property	\$ 35	\$ 35	\$ 38	\$ 3
Intergovernmental Revenue	500	500	500	-
	<hr/>	<hr/>	<hr/>	<hr/>
Total revenues	535	535	538	3
<b>Expenditures:</b>				
Public Protection:				
Salaries and Benefits	297	297	126	171
Services and Supplies	5	5	5	-
Other Charges	-	-	-	-
Total expenditures	<hr/>	<hr/>	<hr/>	<hr/>
	302	302	131	171
<b>Other Financing Sources:</b>				
Transfers In (Out)	<hr/>	<hr/>	<hr/>	<hr/>
	-	-	-	-
Total Other Financing Sources (Uses)	<hr/>	<hr/>	<hr/>	<hr/>
	-	-	-	-
Excess of revenues over expenditures	<hr/>	<hr/>	<hr/>	<hr/>
	233	233	407	(174)
<b>Fund balances - beginning</b>	<hr/>	<hr/>	<hr/>	<hr/>
	1,140	1,140	1,140	-
<b>Fund balances - ending</b>	<hr/>	<hr/>	<hr/>	<hr/>
	\$ 1,373	\$ 1,373	\$ 1,547	\$ (174)

**COUNTY OF IMPERIAL**  
**Schedule of Revenues, Expenditures, and Changes in Fund Balances-Budget and Actual**  
**Sheriff's Information Technology System**  
**For the Fiscal Year Ended June 30, 2006**  
(amounts expressed in thousands)

	<u>Budgeted Amounts</u>		<u>Actual Amounts</u>	<u>Variance with Final Budget - Positive (Negative)</u>
	<u>Original</u>	<u>Final</u>		
<b>Revenues:</b>				
Use of Money & Property	-	-	33	33
Intergovernmental Revenues	-	-	35	35
	<hr/>	<hr/>	<hr/>	<hr/>
Total revenues	-	-	68	68
<b>Expenditures:</b>				
Public Protection:				
Services and Supplies	260	262	23	239
Capital Outlay	1,433	1,433	798	635
Contingenecies	-	-	-	-
	<hr/>	<hr/>	<hr/>	<hr/>
Total expenditures	1,693	1,695	821	874
<b>Other Financing Sources:</b>				
Transfers In (Out)	-	-	-	-
	<hr/>	<hr/>	<hr/>	<hr/>
Total Other Financing Sources (Uses)	-	-	-	-
Excess of revenues over expenditures	<hr/> <u>(1,693)</u>	<hr/> <u>(1,695)</u>	<hr/> <u>(753)</u>	<hr/> <u>(942)</u>
<b>Fund balances - beginning</b>	<hr/> <u>1,683</u>	<hr/> <u>1,683</u>	<hr/> <u>1,683</u>	<hr/> <u>-</u>
<b>Fund balances - ending</b>	<hr/> <u>\$ (10)</u>	<hr/> <u>\$ (12)</u>	<hr/> <u>\$ 930</u>	<hr/> <u>\$ (942)</u>



**COUNTY OF IMPERIAL**  
**Statement of Revenues, Expenditures and Changes in Fund Balances - Budget and Actual**  
**Bio Terrorism Preparedness**  
Year Ended June 30, 2006  
(amounts expressed in thousands)

	<u>Budgeted Amounts</u>		<u>Actual Amounts</u>	<u>Variance with Final Budget - Positive (Negative)</u>
	<u>Original</u>	<u>Final</u>		
<b>Revenues:</b>				
Use of Money & Property	\$ -	\$ -	\$ 15	\$ 15
Intergovernmental Revenue	-	-	222	222
	<hr/>	<hr/>	<hr/>	<hr/>
Total revenues	-	-	237	237
<b>Expenditures:</b>				
Public Protection:				
Salaries and Benefits	-	-	-	-
Services and Supplies	-	-	121	(121)
Other Charges	-	-	-	-
Capital Outlay	-	-	5	(5)
Inter Fund Transfers	-	-	-	-
	<hr/>	<hr/>	<hr/>	<hr/>
Total expenditures	-	-	126	(126)
Excess of revenues over expenditures	-	-	111	111
<b>Other financing sources (uses):</b>				
Transfers In (Out)	-	-	-	-
Net change in fund balances	-	-	111	111
<b>Fund balances - beginning</b>	<hr/> 505	<hr/> 505	<hr/> 505	<hr/> -
<b>Fund balances - ending</b>	<hr/> <u>\$ 505</u>	<hr/> <u>\$ 505</u>	<hr/> <u>\$ 616</u>	<hr/> <u>\$ 111</u>

**COUNTY OF IMPERIAL**  
**Statement of Revenues, Expenditures and Changes in Fund Balances - Budget and Actual**  
**Medi-Cal CMSP Fund**  
Year Ended June 30, 2006  
(amounts expressed in thousands)

	<u>Budgeted Amounts</u>		<u>Actual Amounts</u>	<u>Variance with Final Budget - Positive (Negative)</u>
	<u>Original</u>	<u>Final</u>		
<b>Revenues:</b>				
Use of Money & Property	\$ -	\$ -	\$ 30	\$ 30
Intergovernmental Revenue	4,726	4,726	5,386	660
	<hr/>	<hr/>	<hr/>	<hr/>
Total revenues	4,726	4,726	5,416	690
<b>Expenditures:</b>				
Public Protection:				
Salaries and Benefits	-	-	-	-
Services and Supplies	-	-	-	-
Other Charges	4,726	4,726	4,926	(200)
Capital Outlay	-	-	-	-
Inter Fund Transfers	-	-	-	-
	<hr/>	<hr/>	<hr/>	<hr/>
Total expenditures	4,726	4,726	4,926	(200)
Excess of revenues over expenditures	-	-	490	490
<b>Other financing sources (uses):</b>				
Transfers In (Out)	-	-	-	-
Net change in fund balances	-	-	490	490
<b>Fund balances - beginning</b>	<hr/>	<hr/>	<hr/>	<hr/>
	345	345	345	-
<b>Fund balances - ending</b>	<hr/>	<hr/>	<hr/>	<hr/>
	\$ 345	\$ 345	\$ 835	\$ 490

**COUNTY OF IMPERIAL**  
**Statement of Revenues, Expenditures and Changes in Fund Balances - Budget and Actual**  
**ICCED Funds**  
Year Ended June 30, 2006  
(amounts expressed in thousands)

	<b>Budgeted Amounts</b>		<b>Actual Amounts</b>	<b>Variance with Final Budget - Positive (Negative)</b>
	<b>Original</b>	<b>Final</b>		
<b>Revenues:</b>				
Use of Money & Property	\$ -	\$ -	\$ (1)	\$ (1)
Intergovernmental Revenue	6,070	6,070	5,300	(770)
Federal aid	172	172	548	376
Charges for Services	119	119	250	131
Other Revenue	-	-	5	5
	<hr/>	<hr/>	<hr/>	<hr/>
Total revenues	6,361	6,361	6,102	(259)
<b>Expenditures:</b>				
Public Assistance:				
Salaries and Benefits	-	-	-	-
Services and Supplies	6,508	6,509	5,513	996
Other Charges	-	-	-	-
Capital Outlay	1,157	1,157	-	1,157
Intra Fund Transfers	-	-	(19)	19
Inter Fund Transfers	-	-	1	(1)
	<hr/>	<hr/>	<hr/>	<hr/>
Total expenditures	7,665	7,666	5,495	2,171
Excess of revenues over expenditures	(1,304)	(1,305)	607	1,912
<b>Other financing sources (uses):</b>				
Changes in Reserves	-	-	3,551	(3,551)
Transfers In (Out)	-	-	-	-
	<hr/>	<hr/>	<hr/>	<hr/>
Net change in fund balances	(1,304)	(1,305)	4,158	(1,639)
<b>Fund balances - beginning</b>	<hr/>	<hr/>	<hr/>	<hr/>
	2,003	2,003	2,003	-
<b>Fund balances - ending</b>	<hr/>	<hr/>	<hr/>	<hr/>
	\$ 699	\$ 698	\$ 6,161	\$ (1,639)

**COUNTY OF IMPERIAL**  
**Statement of Revenues, Expenditures and Changes in Fund Balances - Budget and Actual**  
**Other Special Revenue Funds**  
Year Ended June 30, 2006  
(amounts expressed in thousands)

	<u>Budgeted Amounts</u>		<u>Actual Amounts</u>	<u>Variance with Final Budget - Positive (Negative)</u>
	<u>Original</u>	<u>Final</u>		
<b>Revenues:</b>				
Licenses & Permits	\$ 4	\$ 4	\$ -	\$ 4
Fines, Forfeitures & Penalties	938	938	956	(18)
Use of Money & Property	82	113	170	(57)
Intergovernmental Revenue	511	514	195	319
Federal aid	14,739	15,610	10,373	5,237
Charges for Services	6,647	6,726	5,961	765
Sale of Fixed Assets	512	497	179	318
Other Revenues	4,331	7,133	5,647	1,486
Total revenues	<u>27,764</u>	<u>31,535</u>	<u>23,481</u>	<u>8,054</u>
<b>Expenditures:</b>				
Current:				
General Government	460	475	436	39
Public Protection	7,894	12,087	9,592	2,495
Health & Sanitation	4,950	4,785	4,404	381
Public Assistance	11,198	11,612	10,292	1,320
Public Ways & Facilities	2,888	2,905	439	2,466
Total expenditures	<u>27,390</u>	<u>31,864</u>	<u>25,163</u>	<u>6,701</u>
Excess of revenues over expenditures	<u>374</u>	<u>(329)</u>	<u>(1,682)</u>	<u>1,353</u>
<b>Other financing sources (uses):</b>				
Changes in Reserves	-	-	2	(2)
Transfers In (Out)	-	-	-	-
Net change in fund balances	<u>374</u>	<u>(329)</u>	<u>(1,680)</u>	<u>1,351</u>
<b>Fund balances - beginning</b>	<u>2,494</u>	<u>2,494</u>	<u>2,494</u>	<u>-</u>
<b>Fund balances - ending</b>	<u>\$ 2,868</u>	<u>\$ 2,165</u>	<u>\$ 814</u>	<u>\$ 1,351</u>

## **Internal Service Funds**

Internal Service Funds are established to account for services that are performed by one department of a governmental unit for the benefit of several other departments of the same governmental unit.

**Garage Operating** – The County Garage is under the direction of the Public Works director and is responsible for the administration and management of the County's fleet of light vehicles. The authority of the County Board of Supervisors leases these vehicles to various County departments to meet their transportation needs. The cost to maintain the garage operation is totally offset by a mileage rate charge to these departments. This budget unit is also used to replace Motor Pool vehicles, which are considered obsolete when they reach mileage or age, which would cause them to become inefficient for continued service.

**Central Duplicating** – This budget unit was established as an internal service fund to provide printing and duplicating services, with the exception of the Sheriff's Department. Central Duplicating also provides other services such as binding, collating, drilling, folding, laminating, numbering, perforating, padding, cutting, trimming, and designing of printed forms.

**Centralized Mail System** – This budget unit was created during 1983-84 to identify costs associated with the County's centralized mail system. This system provides for one mail clerk position, as well as the utilization of a digital postage machine. Costs are recovered from departments resulting in a net cost of zero to the general fund. This budget is under the direction of the Purchasing Agent.

**Flood Control** – This budget unit is created to reflect flood control projects undertaken by the County. The Board of Supervisors approves specific projects.

**Communication Services** – The Communications Services Office, under the supervision of the County Executive Officer, is responsible for coordinating the delivery of telecommunications products and services for all County departments, and for ensuring that departments receive the mix of products and services that provides the greatest benefit at the most advantageous cost.

**Liability Insurance** – This fund was established for the processing of claims for the County's liability and property losses. The County is a member of the County Supervisors Association of California – Excess Insurance Authority (CSAC-EIA) which provides for coverage of liability claims in excess of the County's \$200,000 self-insured retention (S-I-R).

**Workers' Compensation** – This fund was established for the accumulation of reserves to pay for self-funded workers' compensation losses. The level of self-insurance, adopted in 1985-86, is \$300,000 per occurrence. Any losses under this amount are paid from this fund and losses above the amount are covered by excess insurance.

## Internal Service Funds

**Unemployment Compensation Insurance** – This fund was established to pay for required claims as a result of a State mandate effective January 1, 1978, which required all local governments to provide for unemployment compensation. Claims management is provided by Gibbens Company.

**Health Plan** – The Imperial County Health Plan became operational January 1, 1980. It is a self-funded, self-sustaining program of employee medical benefits, funded by the County and employee contributions, which are determined by negotiations and based on expenditure history. Retirees of Imperial County also qualify for coverage and are provided protection by contract with the Retirement Board.

**Dental/Vision Plan** – This fund was established in 1985-86 for the accumulation of reserves to pay for self-funded Dental/Vision claims.

**Medical Malpractice** – This fund was established in 1992-93 to provide for the accumulation of reserves for the County self-insured Medical Malpractice Program. Stop loss insurance provides protection for excessive claims expense.

**Auto Plan** – This fund was established in 1992-93 for the accumulation of reserves to pay for self-funded auto claims.

**Information Systems** – This fund provides computer hardware and software related expertise including operational planning and support to all County departments. One of the department's objectives is to ensure that state-of-the-art technology will guide the County into the future. The budget unit was established to account for the development of new systems, the maintenance of existing systems and operation of the computer center as an Internal Service Fund. This budget includes a \$50,000 contingency reserve for equipment replacement reserve.

**Workers Comp Court Tail Claims** – This fund was established to track workers compensation claims for court employees prior to the Courts separation from the County.

**COUNTY OF IMPERIAL**  
**Combining Statement of Net Assets**  
**Internal Service Funds**  
June 30, 2006  
(amounts expressed in thousands)

	<u>Garage Operating</u>	<u>Central Dupl.</u>	<u>Central. Mail System</u>	<u>Flood Control</u>	<u>Comm. Services</u>
<b>ASSETS:</b>					
Current Assets:					
Cash and cash equivalents	\$ 2,398	\$ 44	\$ (139)	\$ 203	\$ 379
Receivables (net):					
Accounts	12	-	-	-	-
Interest	16	-	-	1	2
Due from Other Funds	251	44	33	-	20
Inventories and Prepaid Expenses	27	31	9	-	-
Total Current Assets	<u>2,704</u>	<u>119</u>	<u>(97)</u>	<u>204</u>	<u>401</u>
Noncurrent Assets:					
Land	23				
Construction in progress	-	-	-	-	-
Structures & Improvements	163	-	-	-	-
Vehicles	5,998	-	-	-	-
Equipment	183	234	139	-	769
Accumulated Depreciation	(3,982)	(104)	(86)	-	(692)
Total Noncurrent Assets	<u>2,385</u>	<u>130</u>	<u>53</u>	<u>-</u>	<u>77</u>
Total Assets	<u>\$ 5,089</u>	<u>\$ 249</u>	<u>\$ (44)</u>	<u>\$ 204</u>	<u>\$ 478</u>
<b>LIABILITIES:</b>					
Current Liabilities:					
Claims Payable	\$ -	\$ -	\$ -	\$ -	\$ -
Accounts Payable	76	6	-	-	-
Interest Payable	-	-	-	-	-
Accrued Payroll	17	4	1	-	3
Due to Other Funds	3	1	-	-	-
Current portion of compensated absences	2	(9)	1	-	-
Capital Lease Obligations-					
Current Portion	-	-	-	-	-
Total Current Liabilities	<u>98</u>	<u>2</u>	<u>2</u>	<u>-</u>	<u>3</u>
Long Term Liabilities:					
Compensated Absences	53	11	-	-	8
Capital Lease Obligations-					
Net of Current Portion	-	-	-	-	-
Total Noncurrent Liabilities	<u>53</u>	<u>11</u>	<u>-</u>	<u>-</u>	<u>8</u>
Total Liabilities	<u>151</u>	<u>13</u>	<u>2</u>	<u>-</u>	<u>11</u>
<b>NET ASSETS:</b>					
Invested in Capital Assets, net of related debt	2,385	131	53	-	77
Restricted	2,049	30	70	-	700
Unrestricted	504	75	(169)	204	(310)
Total Net Assets	<u>\$ 4,938</u>	<u>\$ 236</u>	<u>\$ (46)</u>	<u>\$ 204</u>	<u>\$ 467</u>

**COUNTY OF IMPERIAL**  
**Combining Statement of Net Assets**  
**Internal Service Funds**  
June 30, 2006  
(amounts expressed in thousands)

	<u>Liability Insurance</u>	<u>Workers' Comp. Benefits</u>	<u>Unemp. Insurance</u>	<u>Medical Plan</u>	<u>Dental/ Vision Plan</u>
<b>ASSETS:</b>					
Current Assets:					
Cash and cash equivalents	\$ 4,049	\$ 12,682	\$ 590	\$ 7,801	\$ 1,296
Receivables (net):				-	
Accounts	-	-	15	-	-
Interest	26	81	3	49	9
Due from Other Funds	42	-	-	-	-
Inventories and Prepaid Expenses	-	-	-	-	-
Total Current Assets	<u>4,117</u>	<u>12,763</u>	<u>608</u>	<u>7,850</u>	<u>1,305</u>
Noncurrent Assets:					
Land					
Construction in progress	-	-	-	-	-
Structures & Improvements	-	-	-	-	-
Vehicles	-	-	-	-	-
Equipment	-	-	-	-	-
Accumulated Depreciation	-	-	-	-	-
Total Noncurrent Assets	<u>-</u>	<u>-</u>	<u>-</u>	<u>-</u>	<u>-</u>
Total Assets	<u>\$ 4,117</u>	<u>\$ 12,763</u>	<u>\$ 608</u>	<u>\$ 7,850</u>	<u>\$ 1,305</u>
<b>LIABILITIES:</b>					
Current Liabilities:					
Claims Payable	\$ 1,279	\$ 4,124	\$ -	\$ 1,578	\$ 70
Accounts Payable	45	-	-	108	-
Interest Payable	-	-	-	-	-
Accrued Payroll	-	-	-	-	-
Due to Other Funds	(5)	-	-	-	-
Current portion of compensated absences	-	-	-	-	-
Capital Lease Obligations-					
Current Portion	-	-	-	-	-
Total Current Liabilities	<u>1,319</u>	<u>4,124</u>	<u>-</u>	<u>1,686</u>	<u>70</u>
Long Term Liabilities:					
Compensated Absences	-	-	-	-	-
Capital Lease Obligations-					
Net of Current Portion	-	-	-	-	-
Total Noncurrent Liabilities	<u>-</u>	<u>-</u>	<u>-</u>	<u>-</u>	<u>-</u>
Total Liabilities	<u>1,319</u>	<u>4,124</u>	<u>-</u>	<u>1,686</u>	<u>70</u>
<b>NET ASSETS:</b>					
Invested in Capital Assets, net of related debt	-	-	-	-	-
Restricted	(1,275)	(4,123)	-	(1,578)	(70)
Unrestricted	4,073	12,762	608	7,742	1,305
Total Net Assets	<u>\$ 2,798</u>	<u>\$ 8,639</u>	<u>\$ 608</u>	<u>\$ 6,164</u>	<u>\$ 1,235</u>



**COUNTY OF IMPERIAL**  
**Combining Statement of Net Assets**  
**Internal Service Funds**  
June 30, 2006  
(amounts expressed in thousands)

	<u>Medical Malpractice</u>	<u>Auto</u>	<u>Information Systems</u>	<u>Workers Comp Court Tail Claims</u>	<u>Total</u>
<b>ASSETS:</b>					
Current Assets:					
Cash and cash equivalents	\$ 859	\$ 2,679	\$ (116)	\$ 262	\$ 32,987
Receivables (net):					
Accounts	-	-	-	-	27
Interest	6	17	-	-	210
Due from Other Funds	-	-	220	-	610
Inventories and Prepaid Expenses	-	-	-	-	67
Total Current Assets	<u>865</u>	<u>2,696</u>	<u>104</u>	<u>262</u>	<u>33,901</u>
Noncurrent Assets:					
Land					23
Construction in progress	-	-	-	-	-
Structures & Improvements	-	-	-	-	163
Vehicles	-	-	-	-	5,998
Equipment	-	-	799	-	2,124
Accumulated Depreciation	-	-	(792)	-	(5,656)
Total Noncurrent Assets	<u>-</u>	<u>-</u>	<u>7</u>	<u>-</u>	<u>2,652</u>
Total Assets	<u>\$ 865</u>	<u>\$ 2,696</u>	<u>\$ 111</u>	<u>\$ 262</u>	<u>\$ 36,553</u>
<b>LIABILITIES:</b>					
Current Liabilities:					
Claims Payable	\$ -	\$ -	\$ -	\$ -	\$ 7,051
Accounts Payable	-	-	4	-	239
Interest Payable	-	-	2	-	2
Accrued Payroll	-	-	36	-	61
Due to Other Funds	-	-	2	-	1
Current portion of compensated absences	-	-	5	-	(1)
Capital Lease Obligations-					
Current Portion	-	-	-	-	-
Total Current Liabilities	<u>-</u>	<u>-</u>	<u>49</u>	<u>-</u>	<u>7,353</u>
Long Term Liabilities:					
Compensated Absences	-	-	81	-	153
Capital Lease Obligations-					
Net of Current Portion	-	-	-	-	-
Total Noncurrent Liabilities	<u>-</u>	<u>-</u>	<u>81</u>	<u>-</u>	<u>153</u>
Total Liabilities	<u>-</u>	<u>-</u>	<u>130</u>	<u>-</u>	<u>7,506</u>
<b>NET ASSETS:</b>					
Invested in Capital Assets, net of related debt	-	-	6	-	2,652
Restricted	-	-	(84)	-	(4,281)
Unrestricted	865	2,696	59	262	30,676
Total Net Assets	<u>\$ 865</u>	<u>\$ 2,696</u>	<u>\$ (19)</u>	<u>\$ 262</u>	<u>\$ 29,047</u>

**COUNTY OF IMPERIAL**  
**Combining Statement of Revenues, Expenses and Changes in Fund Net Assets**  
**Internal Service Funds**  
For the Fiscal Year Ended June 30, 2006  
(amounts expressed in thousands)

	<b>Garage Operating</b>	<b>Central Duplicating</b>	<b>Centralized Mail System</b>	<b>Flood Control</b>	<b>Comm. Services</b>
<b>Operating Revenues:</b>					
Charges for Services	\$ 2,783	\$ 347	\$ 423	\$ -	\$ 143
Other Revenues	-	-	-	-	2
Total Operating Revenues	<u>2,783</u>	<u>347</u>	<u>423</u>	<u>-</u>	<u>145</u>
<b>Operating Expenses:</b>					
Salaries and Benefits	461	165	44	-	78
Services and Supplies	1,438	131	338	-	9
Depreciation	774	10	35	-	21
Total Operating Expenses	<u>2,673</u>	<u>306</u>	<u>417</u>	<u>-</u>	<u>108</u>
Operating Income (Loss)	<u>110</u>	<u>41</u>	<u>6</u>	<u>-</u>	<u>37</u>
<b>Non-operating Revenues (Expenses):</b>					
Gain (Loss) on Sale of Fixed Assets	197	-	-	-	-
Changes in Designated Reserve	-	-	-	-	-
Interest - Income	64	-	(1)	5	9
Total Non-Operating Revenues	<u>261</u>	<u>-</u>	<u>(1)</u>	<u>5</u>	<u>9</u>
Net Income (Loss) before Transfers	<u>371</u>	<u>41</u>	<u>5</u>	<u>5</u>	<u>46</u>
Transfers in (out):					
Transfers In	-	-	-	-	-
Transfers Out	-	-	-	-	-
Total Transfers In (Out)	<u>-</u>	<u>-</u>	<u>-</u>	<u>-</u>	<u>-</u>
<b>Change in Net Assets</b>	<u>371</u>	<u>41</u>	<u>5</u>	<u>5</u>	<u>46</u>
Net Assets - Beginning	<u>4,567</u>	<u>195</u>	<u>(51)</u>	<u>199</u>	<u>421</u>
Net Assets - Ending	<u>\$ 4,938</u>	<u>\$ 236</u>	<u>\$ (46)</u>	<u>\$ 204</u>	<u>\$ 467</u>

**COUNTY OF IMPERIAL**  
**Combining Statement of Revenues, Expenses and Changes in Fund Net Assets**  
**Internal Service Funds**  
For the Fiscal Year Ended June 30, 2006  
(amounts expressed in thousands)

	<b>Liability Insurance</b>	<b>Workers' Compensation Benefits</b>	<b>Unemployment Insurance</b>	<b>Medical Plan</b>	<b>Dental/ Vision Plan</b>
<b>Operating Revenues:</b>					
Charges for Services	\$ 1,962	\$ 7,010	\$ 600	\$ 16,885	\$ 877
Other Revenues	-	-	-	1	-
Total Operating Revenues	<u>1,962</u>	<u>7,010</u>	<u>600</u>	<u>16,886</u>	<u>877</u>
<b>Operating Expenses:</b>					
Salaries and Benefits	-	-	-	-	-
Services and Supplies	2,221	3,787	334	11,770	797
Depreciation	-	-	-	-	-
Total Operating Expenses	<u>2,221</u>	<u>3,787</u>	<u>334</u>	<u>11,770</u>	<u>797</u>
Operating Income (Loss)	<u>(259)</u>	<u>3,223</u>	<u>266</u>	<u>5,116</u>	<u>80</u>
<b>Non-operating Revenues (Expenses):</b>					
Gain (Loss) on Sale of Fixed Assets	-	-	-	-	-
Changes in Designated Reserve	85	626	-	320	4
Interest - Income	96	285	11	128	34
Total Non-Operating Revenues	<u>181</u>	<u>911</u>	<u>11</u>	<u>448</u>	<u>38</u>
Net Income (Loss) before Transfers	<u>(78)</u>	<u>4,134</u>	<u>277</u>	<u>5,564</u>	<u>118</u>
Transfers in (out):					
Transfers In	-	-	-	-	-
Transfers Out	-	(262)	-	-	-
Total Transfers In (Out)	<u>-</u>	<u>(262)</u>	<u>-</u>	<u>-</u>	<u>-</u>
<b>Change in Net Assets</b>	<u>(78)</u>	<u>3,872</u>	<u>277</u>	<u>5,564</u>	<u>118</u>
Net Assets - Beginning	<u>2,876</u>	<u>4,767</u>	<u>331</u>	<u>600</u>	<u>1,117</u>
Net Assets - Ending	<u>\$ 2,798</u>	<u>\$ 8,639</u>	<u>\$ 608</u>	<u>\$ 6,164</u>	<u>\$ 1,235</u>

**COUNTY OF IMPERIAL**  
**Combining Statement of Revenues, Expenses and Changes in Fund Net Assets**  
**Internal Service Funds**  
For the Fiscal Year Ended June 30, 2006  
(amounts expressed in thousands)

	<b>Medical Malpractice</b>	<b>Auto</b>	<b>Information Systems</b>	<b>Workers Comp Court Tail Claims</b>	<b>Total</b>
<b>Operating Revenues:</b>					
Charges for Services	\$ 159	\$ 330	\$ 1,490	\$ -	\$ 33,009
Other Revenues	-	-	-	-	3
Total Operating Revenues	<u>159</u>	<u>330</u>	<u>1,490</u>	<u>-</u>	<u>33,012</u>
<b>Operating Expenses:</b>					
Salaries and Benefits	-	-	1,296	-	2,044
Services and Supplies	112	44	130	-	21,111
Depreciation	-	-	2	-	842
Total Operating Expenses	<u>112</u>	<u>44</u>	<u>1,428</u>	<u>-</u>	<u>23,997</u>
Operating Income (Loss)	<u>47</u>	<u>286</u>	<u>62</u>	<u>-</u>	<u>9,015</u>
<b>Non-operating Revenues (Expenses):</b>					
Gain (Loss) on Sale of Fixed Assets	-	-	-	-	197
Changes in Designated Reserve	-	-	(5)	-	1,030
Interest - Income	21	65	(6)	-	711
Total Non-Operating Revenues	<u>21</u>	<u>65</u>	<u>(11)</u>	<u>-</u>	<u>1,938</u>
Net Income (Loss) before Transfers	<u>68</u>	<u>351</u>	<u>51</u>	<u>-</u>	<u>10,953</u>
Transfers in (out):					
Transfers In	-	-	-	262	262
Transfers Out	-	-	-	-	(262)
Total Transfers In (Out)	<u>-</u>	<u>-</u>	<u>-</u>	<u>262</u>	<u>-</u>
<b>Change in Net Assets</b>	<u>68</u>	<u>351</u>	<u>51</u>	<u>262</u>	<u>10,953</u>
Net Assets - Beginning	<u>797</u>	<u>2,345</u>	<u>(70)</u>	<u>-</u>	<u>18,094</u>
Net Assets - Ending	<u>\$ 865</u>	<u>\$ 2,696</u>	<u>\$ (19)</u>	<u>\$ 262</u>	<u>\$ 29,047</u>

**COUNTY OF IMPERIAL**  
**Combining Statement of Cash Flows**  
**Internal Service Funds**  
For the Fiscal Year Ended June 30, 2006  
(amounts expressed in thousands)

	<b>Garage Operating</b>	<b>Central Duplicating</b>	<b>Centralized Mail System</b>
<b>Cash flows from operating activities:</b>			
Cash received from users	\$ 2,783	\$ 346	\$ 423
Cash received from operating activities	-	8	-
Cash paid to suppliers	(1,498)	(131)	(338)
Cash paid to employees	(461)	(165)	(44)
Cash paid for operating activities	-	-	-
Net cash provided by operating activities	<u>824</u>	<u>58</u>	<u>41</u>
<b>Cash flows from noncapital financing activities:</b>			
Transfers In	-	-	-
Transfers Out	-	-	-
Net cash provided by (used) in non-capital financing activities	<u>-</u>	<u>-</u>	<u>-</u>
<b>Cash flows from capital and related financing activities:</b>			
Acquisition of capital assets	(934)	(22)	(51)
Proceeds from sale of equipment	197	-	-
	-	-	-
Net cash used by capital and related financing activities	<u>(737)</u>	<u>(22)</u>	<u>(51)</u>
<b>Cash flows from investing activities:</b>			
Interest received	65	1	1
Net increase in cash and cash equivalents	152	37	(9)
<b>Cash and cash equivalents - beginning</b>	<u>2,246</u>	<u>7</u>	<u>(130)</u>
<b>Cash and cash equivalents - ending</b>	<u>\$ 2,398</u>	<u>\$ 44</u>	<u>\$ (139)</u>
Reconciliation of operating income (loss) to net cash			
Provided by operating activities:			
Operating Income (Loss)	\$ 110	\$ 40	\$ 6
Adjustments to reconcile operating income (loss) to net cash provided by operating activities:			
Depreciation expense	774	10	35
Decrease (Increase) in accounts receivable	(12)	-	-
Decrease (Increase) in interest receivable	(5)	-	-
Decrease (Increase) in prepaid expenses	(1)	17	2
Decrease (Increase) in due from other funds	(37)	4	(2)
Increase (Decrease) in accounts payable	12	6	-
Increase (Decrease) in accrued liabilities	(10)	(3)	(1)
Increase (Decrease) in due to other funds	(9)	(7)	-
Increase (Decrease) in insurance loss expense	-	-	-
Increase (Decrease) in compensated absences	2	(9)	1
Total adjustments	<u>714</u>	<u>18</u>	<u>35</u>
Net cash provided by operating activities	<u>\$ 824</u>	<u>\$ 58</u>	<u>\$ 41</u>

**COUNTY OF IMPERIAL**  
**Combining Statement of Cash Flows**  
**Internal Service Funds**  
For the Fiscal Year Ended June 30, 2006  
(amounts expressed in thousands)

	<u>Flood Control</u>	<u>Comm. Services</u>	<u>Liability Insurance</u>
<b>Cash flows from operating activities:</b>			
Cash received from users	\$ -	\$ 143	\$ 1,963
Cash received from operating activities	-	2	-
Cash paid to suppliers	-	(9)	(2,332)
Cash paid to employees	-	(78)	-
Cash paid for operating activities	-	(8)	-
Net cash provided by operating activities	<u>-</u>	<u>50</u>	<u>(369)</u>
<b>Cash flows from noncapital financing activities:</b>			
Transfers In	-	-	-
Transfers Out	-	-	-
Net cash provided by (used) in non-capital financing activities	<u>-</u>	<u>-</u>	<u>-</u>
<b>Cash flows from capital and related financing activities:</b>			
Acquisition of capital assets	-	-	-
Proceeds from sale of equipment	-	-	-
Net cash used by capital and related financing activities	<u>-</u>	<u>-</u>	<u>-</u>
<b>Cash flows from investing activities:</b>			
Interest received	<u>5</u>	<u>9</u>	<u>96</u>
Net increase in cash and cash equivalents	5	59	(273)
<b>Cash and cash equivalents - beginning</b>	<u>198</u>	<u>320</u>	<u>4,322</u>
<b>Cash and cash equivalents - ending</b>	<u>\$ 203</u>	<u>\$ 379</u>	<u>\$ 4,049</u>
Reconciliation of operating income (loss) to net cash			
Provided by operating activities:			
Operating Income (Loss)	\$ -	\$ 37	\$ (258)
Adjustments to reconcile operating income (loss) to net cash provided by operating activities:			
Depreciation expense	-	21	-
Decrease (Increase) in accounts receivable	-	-	-
Decrease (Increase) in interest receivable	-	-	(6)
Decrease (Increase) in prepaid expenses	-	-	-
Decrease (Increase) in due from other funds	-	(5)	(42)
Increase (Decrease) in accounts payable	-	-	(46)
Increase (Decrease) in accrued liabilities	-	(3)	85
Increase (Decrease) in due to other funds	-	(1)	(17)
Increase (Decrease) in insurance loss expense	-	-	(85)
Increase (Decrease) in compensated absences	-	1	-
Total adjustments	<u>-</u>	<u>13</u>	<u>(111)</u>
Net cash provided by operating activities	<u>\$ -</u>	<u>\$ 50</u>	<u>\$ (369)</u>

**COUNTY OF IMPERIAL**  
**Combining Statement of Cash Flows**  
**Internal Service Funds**  
For the Fiscal Year Ended June 30, 2006  
(amounts expressed in thousands)

	<b>Workers'</b>	<b>Unemployment</b>	<b>Medical</b>
	<b>Compensation</b>	<b>Insurance</b>	<b>Plan</b>
	<b>Benefits</b>		
<b>Cash flows from operating activities:</b>			
Cash received from users	\$ 7,101	\$ 600	\$ 16,884
Cash received from operating activities	-	5	74
Cash paid to suppliers	(3,931)	(334)	(11,770)
Cash paid to employees	-	-	-
Cash paid for operating activities	-	-	-
Net cash provided by operating activities	<u>3,170</u>	<u>271</u>	<u>5,188</u>
<b>Cash flows from noncapital financing activities:</b>			
Transfers In	(262)	-	-
Transfers Out	-	-	-
Net cash provided by (used) in non-capital financing activities	<u>(262)</u>	<u>-</u>	<u>-</u>
<b>Cash flows from capital and related financing activities:</b>			
Acquisition of capital assets	-	-	-
Proceeds from sale of equipment	-	-	-
Net cash used by capital and related financing activities	<u>-</u>	<u>-</u>	<u>-</u>
<b>Cash flows from investing activities:</b>			
Interest received	286	11	129
Net increase in cash and cash equivalents	<u>3,194</u>	<u>282</u>	<u>5,317</u>
<b>Cash and cash equivalents - beginning</b>	<u>9,488</u>	<u>308</u>	<u>2,484</u>
<b>Cash and cash equivalents - ending</b>	<u>\$ 12,682</u>	<u>\$ 590</u>	<u>\$ 7,801</u>
Reconciliation of operating income (loss) to net cash			
Provided by operating activities:			
Operating Income (Loss)	\$ 3,222	\$ 266	\$ 5,115
Adjustments to reconcile operating income (loss) to net			
Cash provided by operating activities:			
Depreciation expense	-	-	-
Decrease (Increase) in accounts receivable	-	(15)	-
Decrease (Increase) in interest receivable	(39)	(2)	(30)
Decrease (Increase) in prepaid expenses	-	-	-
Decrease (Increase) in due from other funds	-	24	-
Increase (Decrease) in accounts payable	(3)	-	108
Increase (Decrease) in accrued liabilities	626	-	320
Increase (Decrease) in due to other funds	(10)	(2)	(5)
Increase (Decrease) in insurance loss expense	(626)	-	(320)
Increase (Decrease) in compensated absences	-	-	-
Total adjustments	<u>(52)</u>	<u>5</u>	<u>73</u>
Net cash provided by operating activities	<u>\$ 3,170</u>	<u>\$ 271</u>	<u>\$ 5,188</u>

**COUNTY OF IMPERIAL**  
**Combining Statement of Cash Flows**  
**Internal Service Funds**  
For the Fiscal Year Ended June 30, 2006  
(amounts expressed in thousands)

	<b>Dental/ Vision Plan</b>	<b>Medical Malpractice</b>	<b>Auto</b>
<b>Cash flows from operating activities:</b>			
Cash received from users	\$ 877	\$ 159	\$ 330
Cash received from operating activities	-	-	-
Cash paid to suppliers	(797)	(112)	(44)
Cash paid to employees	-	-	-
Cash paid for operating activities	(4)	(3)	(17)
Net cash provided by operating activities	<u>76</u>	<u>44</u>	<u>269</u>
<b>Cash flows from noncapital financing activities:</b>			
Transfers In	-	-	-
Transfers Out	-	-	-
Net cash provided by (used) in non-capital financing activities	<u>-</u>	<u>-</u>	<u>-</u>
<b>Cash flows from capital and related financing activities:</b>			
Acquisition of capital assets	-	-	-
Proceeds from sale of equipment	-	-	-
Net cash used by capital and related financing activities	<u>-</u>	<u>-</u>	<u>-</u>
<b>Cash flows from investing activities:</b>			
Interest received	33	20	65
Net increase in cash and cash equivalents	<u>109</u>	<u>64</u>	<u>334</u>
<b>Cash and cash equivalents - beginning</b>	<u>1,187</u>	<u>795</u>	<u>2,345</u>
<b>Cash and cash equivalents - ending</b>	<u>\$ 1,296</u>	<u>\$ 859</u>	<u>\$ 2,679</u>
Reconciliation of operating income (loss) to net cash			
Provided by operating activities:			
Operating Income (Loss)	\$ 80	\$ 47	\$ 286
Adjustments to reconcile operating income (loss) to net cash provided by operating activities:			
Depreciation expense	-	-	-
Decrease (Increase) in accounts receivable	-	-	-
Decrease (Increase) in interest receivable	(2)	(1)	(6)
Decrease (Increase) in prepaid expenses	-	-	-
Decrease (Increase) in due from other funds	-	-	-
Increase (Decrease) in accounts payable	-	-	(4)
Increase (Decrease) in accrued liabilities	(4)	-	-
Increase (Decrease) in due to other funds	(2)	(2)	(7)
Increase (Decrease) in insurance loss expense	4	-	-
Increase (Decrease) in compensated absences	-	-	-
Total adjustments	<u>(4)</u>	<u>(3)</u>	<u>(17)</u>
Net cash provided by operating activities	<u>\$ 76</u>	<u>\$ 44</u>	<u>\$ 269</u>



**COUNTY OF IMPERIAL**  
**Combining Statement of Cash Flows**  
**Internal Service Funds**  
For the Fiscal Year Ended June 30, 2006  
(amounts expressed in thousands)

	<b>Information Systems</b>	<b>Workers Comp Court Tail Claims</b>	<b>Total</b>
<b>Cash flows from operating activities:</b>			
Cash received from users	\$ 1,490	\$ -	\$ 33,099
Cash received from operating activities	128	-	217
Cash paid to suppliers	(130)	-	(21,426)
Cash paid to employees	(1,296)	-	(2,044)
Cash paid for operating activities	-	-	(32)
Net cash provided by operating activities	<u>192</u>	<u>-</u>	<u>9,814</u>
<b>Cash flows from noncapital financing activities:</b>			
Transfers In	-	262	-
Transfers Out	-	-	-
Net cash provided by (used) in non-capital financing activities	<u>-</u>	<u>262</u>	<u>-</u>
<b>Cash flows from capital and related financing activities:</b>			
Acquisition of capital assets	(5)	-	(1,012)
Proceeds from sale of equipment	-	-	197
	-	-	-
Net cash used by capital and related financing activities	<u>(5)</u>	<u>-</u>	<u>(815)</u>
<b>Cash flows from investing activities:</b>			
Interest received	(7)	-	714
Net increase in cash and cash equivalents	<u>180</u>	<u>262</u>	<u>9,713</u>
<b>Cash and cash equivalents - beginning</b>	<u>(296)</u>	<u>-</u>	<u>23,274</u>
<b>Cash and cash equivalents - ending</b>	<u>\$ (116)</u>	<u>\$ 262</u>	<u>\$ 32,987</u>
Reconciliation of operating income (loss) to net cash			
Provided by operating activities:			
Operating Income (Loss)	\$ 62	\$ -	\$ 9,013
Adjustments to reconcile operating income (loss) to net cash provided by operating activities:			
Depreciation expense	2	-	842
Decrease (Increase) in accounts receivable	-	-	(27)
Decrease (Increase) in interest receivable	-	-	(91)
Decrease (Increase) in prepaid expenses	-	-	18
Decrease (Increase) in due from other funds	164	-	106
Increase (Decrease) in accounts payable	3	-	76
Increase (Decrease) in accrued liabilities	(39)	-	971
Increase (Decrease) in due to other funds	(5)	-	(67)
Increase (Decrease) in insurance loss expense	-	-	(1,027)
Increase (Decrease) in compensated absences	5	-	-
Total adjustments	<u>130</u>	<u>-</u>	<u>801</u>
Net cash provided by operating activities	<u>\$ 192</u>	<u>\$ -</u>	<u>\$ 9,814</u>





**CAPITAL ASSETS USED IN  
THE OPERATION OF  
GOVERNMENTAL FUNDS**



**COUNTY OF IMPERIAL**  
**Capital Assets Used in the Operation of Government Funds**  
**Schedule by Source\***  
**June 30, 2006**  
(amounts expressed in thousands)

Governmental fund capital assets:

Land	\$	4,060
Construction in progress		5,897
Infrastructure		73,179
Structures and Improvements		53,083
Vehicles		2,956
Furniture and Equipment		29,084
Total governmental funds capital assets	\$	168,259

Investments in governmental funds capital assets by source:

General Fund	\$	143,848
Special Revenue Funds		21,477
Capital Projects		2,934
Total governmental funds capital assets	\$	168,259

\* This schedule presents only the capital assets balances related to governmental funds. Accordingly, the capital assets reported in internal service funds are excluded from the above amounts. Generally, the capital assets of internal service funds are included as governmental activities in the statement of net assets.

**COUNTY OF IMPERIAL**  
**Capital Assets Used in the Operation of Government Funds**  
**Schedule by Function and Activity\***  
**June 30, 2006**  
(amounts expressed in thousands)

	Land	Construction in Progress	Infrastructure	Structures & Improvements	Vehicles	Furniture & Equipment	Total
General Government	\$ 3,936	\$ 5,897	\$ 73,179	\$ 31,917	\$ 56	\$ 2,801	\$ 117,786
Public Protection	15	-	-	18,298	822	10,932	30,067
Public Ways & Facilities	38	-	-	768	1,095	7,900	9,801
Health & Sanitation	14	-	-	1,979	587	4,582	7,162
Public Assistance	-	-	-	-	379	2,740	3,119
Education	57	-	-	121	17	129	324
Total government funds capital assets	<u>\$ 4,060</u>	<u>\$ 5,897</u>	<u>\$ 73,179</u>	<u>\$ 53,083</u>	<u>\$ 2,956</u>	<u>\$ 29,084</u>	<u>\$ 168,259</u>

\* This schedule presents only the capital assets balances related to governmental funds. Accordingly, the capital assets reported in internal service funds are excluded from the above amounts. Generally, the capital assets of internal service funds are included as governmental activities in the statement of net assets.

**COUNTY OF IMPERIAL**  
**Capital Assets Used in the Operation of Government Funds**  
**Schedule of Changes By Function and Activity\***  
**June 30, 2006**

(amounts expressed in thousands)

	Balance July 1, 2005	Additions	Deletions	Balance June 30, 2006
General Government	\$ 111,660	\$ 10,049	\$ 3,922	\$ 117,787
Public Protection	28,472	1,768	174	30,066
Public Ways and Facilities	9,671	359	228	9,802
Health and Sanitation	6,756	515	109	7,162
Public Assistance	3,212	(51)	43	3,118
Education	290	34	-	324
<b>Total governmental funds capital assets</b>	<b>\$ 160,061</b>	<b>\$ 12,674</b>	<b>\$ 4,476</b>	<b>\$ 168,259</b>

\* This schedule presents only the capital assets balances related to governmental funds. Accordingly, the capital assets reported in internal service funds are excluded from the above amounts. Generally, the capital assets of internal service funds are included as governmental activities in the statement of net assets.







## **SINGLE AUDIT SECTION**

- Independent Auditor Letters
- Schedule of Expenditures of Federal Awards
- Schedule of Findings and Questioned Costs
- Status of Prior Year Findings and Questioned Costs





**REPORT ON INTERNAL CONTROL OVER FINANCIAL REPORTING AND ON COMPLIANCE  
AND OTHER MATTERS BASED ON AN AUDIT OF FINANCIAL STATEMENTS PERFORMED  
IN ACCORDANCE WITH GOVERNMENT AUDITING STANDARDS**

To the Board of Supervisors  
County of Imperial, California

We have audited the financial statements of County of Imperial, California, as of and for the year ended June 30, 2006, and have issued our report thereon dated March 23, 2007. We conducted our audit in accordance with auditing standards generally accepted in the United States of America and the standards applicable to financial audits contained in *Government Auditing Standards*, issued by the Comptroller General of the United States.

Compliance and Other Matters

As part of obtaining reasonable assurance about whether County of Imperial, California's financial statements are free of material misstatement, we performed tests of its compliance with certain provisions of laws, regulations, contracts and grants, noncompliance with which could have a direct and material effect on the determination of financial statement amounts. However, providing an opinion on compliance with those provisions was not an objective of our audit and, accordingly, we do not express such an opinion. The results of our tests disclosed no instances of noncompliance or other matters that are required to be reported under *Government Auditing Standards*.

Internal Control Over Financial Reporting

In planning and performing our audit, we considered County of Imperial, California's internal control over financial reporting in order to determine our auditing procedures for the purpose of expressing our opinion on the financial statements and not to provide an opinion on the internal control over financial reporting. Our consideration of the internal control over financial reporting would not necessarily disclose all matters in the internal control over financial reporting that might be material weaknesses. A material weakness is a reportable condition in which the design or operation of one or more of the internal control components does not reduce to a relatively low level the risk that misstatements caused by error or fraud in amounts that would be material in relation to the financial statements being audited may occur and not be detected within a timely period by employees in the normal course of performing their assigned functions. We noted no matters involving the internal control over financial reporting and its operation that we consider to be material weaknesses.

This report is intended for the information of the audit committee, management, and federal awarding agencies and pass-through entities and is not intended to be and should not be used by anyone other than these specified parties.

*Hutchinson and Bloodgood LLP*

March 23, 2007

**REPORT ON COMPLIANCE WITH REQUIREMENTS APPLICABLE  
TO EACH MAJOR PROGRAM AND INTERNAL CONTROL OVER  
COMPLIANCE IN ACCORDANCE WITH OMB CIRCULAR A-133**

To the Board of Supervisors  
County of Imperial, California

Compliance

We have audited the compliance of County of Imperial, California, with the types of compliance requirements described in the *U. S. Office of Management and Budget (OMB) Circular A-133 Compliance Supplement* that are applicable to each of its major federal programs for the year ended June 30, 2006. County of Imperial, California's major federal programs are identified in the summary of auditors' results section of the accompanying schedule of findings and questioned costs. Compliance with the requirements of laws, regulations, contracts and grants applicable to each of its major federal programs is the responsibility of County of Imperial, California's management. Our responsibility is to express an opinion on County of Imperial, California's compliance based on our audit.

We conducted our audit of compliance in accordance with auditing standards generally accepted in the United States of America; the standards applicable to financial audits contained in *Government Auditing Standards*, issued by the Comptroller General of the United States; and OMB Circular A-133, *Audits of States, Local Governments, and Non-Profit Organizations*. Those standards and OMB Circular A-133 require that we plan and perform the audit to obtain reasonable assurance about whether noncompliance with the types of compliance requirements referred to above that could have a direct and material effect on a major federal program occurred. An audit includes examining, on a test basis, evidence about County of Imperial, California's compliance with those requirements and performing such other procedures as we considered necessary in the circumstances. We believe that our audit provides a reasonable basis for our opinion. Our audit does not provide a legal determination on County of Imperial, California's compliance with those requirements.

In our opinion, County of Imperial, California complied, in all material respects, with the requirements referred to above that are applicable to each of its major federal programs for the year ended June 30, 2006.

Internal Control Over Compliance

The management of County of Imperial, California, is responsible for establishing and maintaining effective internal control over compliance with requirements of laws, regulations, contracts and grants applicable to federal programs. In planning and performing our audit, we considered County of Imperial, California's internal control over compliance with requirements that could have a direct and material effect on a major federal program in order to determine our auditing procedures for the purpose of expressing our opinion on compliance and to test and report on internal control over compliance in accordance with OMB Circular A-133.

Our consideration of the internal control over compliance would not necessarily disclose all matters in the internal control that might be material weaknesses. A material weakness is a condition in which the design or operation of one or more of the internal control components does not reduce to a relatively low level the risk that noncompliance with applicable requirements of laws, regulations, contracts and grants caused by error or fraud that would be material in relation to a major federal program being audited may occur and not be detected within a timely period by employees in the normal course of performing their assigned functions. We noted no matters involving the internal control over compliance and its operation that we consider to be material weaknesses.

#### Schedule of Expenditures of Federal Awards

We have audited the financial statements of County of Imperial, California as of and for the year ended June 30, 2006, and have issued our report thereon dated March 23, 2007. Our audit was performed for the purpose of forming an opinion on the financial statements taken as a whole. The accompanying schedule of expenditures of federal awards is presented for purposes of additional analysis as required by OMB Circular A-133 and is not a required part of the financial statements. Such information has been subjected to the auditing procedures applied in the audit of the financial statements and, in our opinion, is fairly stated, in all material respects, in relation to the financial statements taken as a whole.

This report is intended for the information of the audit committee, management, and federal awarding agencies and pass-through entities and is not intended to be and should not be used by anyone other than these specified parties.

*Hutchinson and Bloodgood LLP*

March 23, 2007

**COUNTY OF IMPERIAL, CALIFORNIA  
SCHEDULE OF EXPENDITURES OF FEDERAL AWARDS  
FOR THE YEAR ENDED JUNE 30, 2006**

<u>Federal Grant/Pass-Through Grantor/ Program Title</u>	<u>Federal C.F.D.A. Number</u>	<u>Pass-Through Grantor's Number</u>	<u>Program Expenditures</u>
<b><u>U.S. DEPARTMENT OF COMMERCE</u></b>			
Economic Development - Planning Asst.	11.302	07-85-05455	\$ 60,000
		Subtotal 11.302	<u>60,000</u>
Defense Logistics Agency-PTAC	12.002	SP48000-04-2-0352	<u>115,126</u>
		Subtotal 12.002	<u>115,126</u>
North American Develop. Bank		2001-029-CA-TA	<u>21,818</u>
<b>TOTAL DEPARTMENT OF COMMERCE</b>			<b><u><u>196,944</u></u></b>
<b><u>U.S. DEPARTMENT OF HOUSING AND URBAN DEVELOPMENT</u></b>			
Housing and Community Development CDBG GRANTS			
* Financial Stage Engineering	14.228		<u>5,022,903</u>
<b>TOTAL DEPARTMENT OF HOUSING AND URBAN DEVELOPMENT</b>			<b><u><u>5,022,903</u></u></b>
<b><u>U.S. DEPARTMENT OF HEALTH AND HUMAN SERVICES</u></b>			
Passed Through State Department of Health Services:			
Project Grants and Cooperative Agreements for Tuberculosis Control Programs	93.116	95-1176-04-05	<u>105,050</u>
		Subtotal 93.116	<u>105,050</u>
AIDS Master Grant Case Management	93.917	047-35350	25,171
I.C. Ryan White CARE Consortia	93.917	00-91667	<u>59,408</u>
		Subtotal 93.917	<u>84,579</u>
Maternal and Child Health Service Block Grant:			
MCH Coordinator/PH Nutritionist/AFLP	93.994	200413	<u>167,462</u>
		Subtotal 93.994	<u>167,462</u>

**COUNTY OF IMPERIAL, CALIFORNIA  
SCHEDULE OF EXPENDITURES OF FEDERAL AWARDS  
FOR THE YEAR ENDED JUNE 30, 2006**

<b>Federal Grant/Pass-Through Grantor/ Program Title</b>	<b>Federal C.F.D.A. Number</b>	<b>Pass-Through Grantor's Number</b>	<b>Program Expenditures</b>
Passed Through State Department of Health Services:			
Medi-Cal Admin. (MAA)		02-25129	1,037,915
Childhood Lead Posioning		02-25043	10,049
California Children Service (CCS)			134,241
Targeted Case Management		00-9492	118,583
Child Health Disb. (CHDP)			<u>124,281</u>
		Subtotal	<u>1,425,069</u>
Bioterrorism Preparededness	93.889	06-13-03-IMP	<u>132,161</u>
		Subtotal 93.889	<u>132,161</u>
Total State Dept. of Health			<u>1,914,321</u>
Passed Through State Department of Alcohol and Drug Programs:			
Alcohol and Drug Abuse and Mental Health Services Block Grant:			
Vista Sands Children's Intensive Day Treatment Program	93.958		<u>355,042</u>
		Subtotal 93.958	<u>355,042</u>
Stewart B. McKinney/Homeless	93.150		<u>50,633</u>
		Subtotal 93.150	<u>50,633</u>
Club Live	93.959		3,000
Friday Night Live	93.959		3,000
SAPT	93.959	SCC 13(04/05)	<u>1,037,701</u>
		Subtotal 93.959	<u>1,043,701</u>



**COUNTY OF IMPERIAL, CALIFORNIA  
 SCHEDULE OF EXPENDITURES OF FEDERAL AWARDS  
 FOR THE YEAR ENDED JUNE 30, 2006**

<b>Federal Grant/Pass-Through Grantor/ Program Title</b>	<b>Federal C.F.D.A. Number</b>	<b>Pass-Through Grantor's Number</b>	<b>Program Expenditures</b>
Passed Through State Department of Alcohol and Drug Programs (cont):			
Federal Medi-Cal	93.778	SCC 13(05/06)	<u>272,592</u>
		Subtotal 93.778	<u>272,592</u>
Total State Dept. of Alcohol & Drug Programs			<u>1,721,968</u>
Passed Through State Department of Social Services:			
*Child Support Enforcement	93.563		<u>3,616,012</u>
		Subtotal 93.563	<u>3,616,012</u>
*TANF Temporary Need	93.558		15,506,652
*Asst. Payments-Maint. Assist.	93.558		<u>10,501,773</u>
		Subtotal 93.558	<u>26,008,425</u>
Total State Dept. of Social Services			<u>29,624,437</u>
Passed Through State Department Office of Aging:			
Title VII-B Elder Abuse Prev.	93.041	AP-0506-24	<u>2,852</u>
		Subtotal 93.041	<u>2,852</u>
Title VII-A Ombudsman	93.042	AP-0506-24	<u>19,099</u>
		Subtotal 93.042	<u>19,099</u>
Title III D - Disease Prevention	93.043	AP-0506-24	<u>12,112</u>
		Subtotal 93.043	<u>12,112</u>
Title III B - Support Services Senior Centers	93.044	AP-0506-24	<u>192,079</u>
		Subtotal 93.044	<u>192,079</u>

**COUNTY OF IMPERIAL, CALIFORNIA  
SCHEDULE OF EXPENDITURES OF FEDERAL AWARDS  
FOR THE YEAR ENDED JUNE 30, 2006**

<u>Federal Grant/Pass-Through Grantor/ Program Title</u>	<u>Federal C.F.D.A. Number</u>	<u>Pass-Through Grantor's Number</u>	<u>Program Expenditures</u>
Passed Through State Department Office of Aging (cont):			
Title III C-1 & C-2	93.045	AP-0506-24	<u>339,214</u>
		Subtotal 93.044	<u>339,214</u>
Title III E Family Caregiver Service	93.052	AP-0506-24	<u>87,278</u>
		Subtotal 93.052	<u>87,278</u>
NSIP Meal Subsidiary III	93.053	AP-0506-24	<u>54,014</u>
		Subtotal 93.053	<u>54,014</u>
Total State Dept. of Aging			<u>706,648</u>
<b>TOTAL DEPARTMENT OF HEALTH AND HUMAN SERVICES</b>			<b><u>33,967,374</u></b>
<b><u>U.S. DEPARTMENT OF LABOR</u></b>			
Passed Through State Department of Employment Development:			
Steps to Success	17.249	AZ10137JB	<u>1,524,228</u>
		Subtotal 17.249	<u>1,524,228</u>
One Stop Career Center Initiative	17.257		<u>3,419,087</u>
		Subtotal 17.257	<u>3,419,087</u>
*Workforce Investment Act	17.258		<u>2,353,714</u>
		Subtotal 17.258	<u>2,353,714</u>
<b>TOTAL DEPARTMENT OF LABOR</b>			<b><u>7,297,029</u></b>
<b><u>U.S. DEPARTMENT OF TRANSPORTATION</u></b>			
Passed Through State Department of Transportation:			
Highway Planning & Construction:			
Resurface Various County Roads	20.205	1603	<u>185,129</u>
		Subtotal 20.205	<u>185,129</u>

\* Major Program

**COUNTY OF IMPERIAL, CALIFORNIA  
SCHEDULE OF EXPENDITURES OF FEDERAL AWARDS  
FOR THE YEAR ENDED JUNE 30, 2006**

<b>Federal Grant/Pass-Through Grantor/ Program Title</b>	<b>Federal C.F.D.A. Number</b>	<b>Pass-Through Grantor's Number</b>	<b>Program Expenditures</b>
Passed Through State Department of Transportation (cont):			
Rehabilitate Airport/Runway	20.106	DTFA08-01-C-21409	878,353
Rehabilitate Airport	20.106	DTFA08-02-C-21524	529,058
Rehabilitate Airport	20.106	DTFA08-03-C-21677	14,452
Airport Erosion	20.106	DTFA08-04-C-21821	28,883
Airport Security	20.106	HST501-04-A-LEF0041	<u>28,250</u>
		Subtotal 20.106	<u>1,478,996</u>
Urbanized Area Formula Program	20.507	CA-90-Y395-00	<u>733,338</u>
		Subtotal 20-507	<u>733,338</u>
<b>TOTAL U.S. DEPARTMENT OF TRANSPORTATION</b>			<b><u><u>2,397,463</u></u></b>
<b><u>U.S. DEPARTMENT OF AGRICULTURE</u></b>			
USDA, Community Facilities Loan	10.766	1/11/2006	<u>50,000</u>
		Subtotal 10.766	<u>50,000</u>
USDA, POE Colonia Sewer	10.769	USDA POE Sewer	<u>316,436</u>
		Subtotal 10.769	<u>316,436</u>
Passed Through State Department of Social Services:			
*Food Stamps	10.551		<u>19,261,745</u>
		Subtotal 10.551	<u>19,261,745</u>
<b>TOTAL U.S. DEPARTMENT OF AGRICULTURE</b>			<b><u><u>19,628,181</u></u></b>

**COUNTY OF IMPERIAL, CALIFORNIA  
SCHEDULE OF EXPENDITURES OF FEDERAL AWARDS  
FOR THE YEAR ENDED JUNE 30, 2006**

<u>Federal Grant/Pass-Through Grantor/ Program Title</u>	<u>Federal C.F.D.A. Number</u>	<u>Pass-Through Grantor's Number</u>	<u>Program Expenditures</u>
<b><u>FEDERAL EMERGENCY MANAGEMENT AGENCY</u></b>			
Passed Through State Office of Emergency Services:			
Emergency Assistance Mgmt.	83.552		<u>56,835</u>
		Subtotal 83.552	<u>56,835</u>
Assistance to Firefighters	97.044	EMW-2005-FG-13272	<u>36,158</u>
		Subtotal 97.044	<u>36,158</u>
Homeland Security Grant	97.073	2004-0045	102,314
Homeland Security Grant	97.073	2005-15	<u>449,426</u>
		Subtotal 97.073	<u>551,740</u>
<b>TOTAL EMERGENCY MANAGEMENT AGENCY</b>			<b><u>644,733</u></b>
<b><u>U.S. DEPARTMENT OF JUSTICE</u></b>			
Passed Through State Office of Criminal Justice:			
Victim/Witness Natl Child Alliance	16.547		<u>84,669</u>
		Subtotal 16.547	<u>84,669</u>
Edward Byrne Memorial Formula Grant	16.579		53,226
Office of Criminal Justice Planning Special Prosecutions Unit	16.579	DC 04170130	<u>186,503</u>
		Subtotal 16.579	<u>239,729</u>
OCJP VAWVP	16.588		<u>98,823</u>
		Subtotal 16.588	<u>98,823</u>
H.I.D.T.A. Grant - Sheriff	16.0		1,064,512
H.I.D.T.A. Grant - DA	16.0		<u>129,376</u>
		Subtotal 16.0	<u>1,193,888</u>

**COUNTY OF IMPERIAL, CALIFORNIA  
SCHEDULE OF EXPENDITURES OF FEDERAL AWARDS  
FOR THE YEAR ENDED JUNE 30, 2006**

<u>Federal Grant/Pass-Through Grantor/ Program Title</u>	<u>Federal C.F.D.A. Number</u>	<u>Pass-Through Grantor's Number</u>	<u>Program Expenditures</u>
Passed Through State Office of Criminal Justice (cont):			
Southwest Border Protection Initiative			<u>255,625</u>
		Subtotal Southwest Border	<u>255,625</u>
<b>TOTAL U.S. DEPARTMENT OF JUSTICE</b>			<b><u>1,872,734</u></b>
<b><u>ENVIRONMENTAL PROTECTION AGENCY</u></b>			
Passed Through California Air Pollution Control Officers Ass.			
CAA Special Purpose	66.034	XA-96910501-1	<u>76,000</u>
<b>TOTAL ENVIRONMENTAL PROTECTION AGENCY</b>		Total	<b><u>76,000</u></b>
<b><u>OFFICE OF LIBRARY SERVICES</u></b>			
Passed Through CA State Library			
LSTA Grant	45.31	40-6142	1,000
LSTA Grant	45.31	40-6302	<u>4,290</u>
<b>TOTAL OFFICE OF LIBRARY SERVICES</b>			<b><u>5,290</u></b>
<b>TOTAL FEDERAL ASSISTANCE</b>			<b><u>\$ 71,108,651</u></b>

**COUNTY OF IMPERIAL, CALIFORNIA**

**SCHEDULE OF FINDINGS AND QUESTIONED COSTS  
For The Year Ended June 30, 2006**

**SECTION I – SUMMARY OF AUDITORS’ RESULTS**

***Financial Statements***

Type of auditors’ report issued:	Unqualified
Internal control over financial reporting:	
Material weakness(es) identified?	___ yes <u> X </u> none reported
Reportable condition(s) identified not considered to be material weaknesses?	___ yes <u> X </u> no
Noncompliance material to financial statements noted?	___ yes <u> X </u> no

***Federal Awards***

Internal Control over major programs:	
Material weakness(es) identified?	___ yes <u> X </u> no
Reportable condition(s) identified not considered to be material weaknesses?	___ yes <u> X </u> none reported

Type of auditors’ report issued on compliance for major programs:	Unqualified
--	-------------

Any audit findings disclosed that are required to be reported in accordance with Circular A-133, Section .510(a)?	___ yes <u> X </u> no
---	-----------------------

Identification of major programs:

<u>CFDA Number(s)</u>	<u>Name of Federal Program or Cluster</u>
10.551	Food Stamps
14.228	Community Development Block Grant
17.249	Steps to Success
17.257	One Stop Career Center Initiative
17.258	Workforce Investment Act
93.558	TANF Temporary Need
93.563	Child Support Enforcement

Dollar threshold used to distinguish between Type A and Type B programs:	\$2,133,260
---	-------------

Auditee qualified as low-risk auditee?	___ yes <u> X </u> no
--	-----------------------

**COUNTY OF IMPERIAL, CALIFORNIA**  
**SCHEDULE OF FINDINGS AND QUESTIONED COSTS**  
**For The Year Ended June 30, 2006**

PROGRAM

FINDING/NONCOMPLIANCE

QUESTIONED  
COSTS

**There are no current year findings.**

**COUNTY OF IMPERIAL, CALIFORNIA**

**STATUS OF PRIOR YEAR FINDINGS AND QUESTIONED COSTS  
For The Year Ended June 30, 2006**

CONDITION

RECOMMENDATION

STATUS

**There are no prior year findings.**



**COUNTY OF IMPERIAL, CALIFORNIA**

**NOTES TO SCHEDULE OF EXPENDITURES OF FEDERAL AWARDS  
For The Year Ended June 30, 2006**

**Note 1. Summary of Significant Accounting Policies**

The accompanying schedule of expenditures of federal awards includes the federal grant activity of the County of Imperial and is presented on the modified accrual basis of accounting. The information in this schedule is presented in accordance with the requirements of OMB Circular A-133, Audits of States, Local Governments, and Non-Profit Organizations.